

OREGON CORNER RESTORATION FORM

Section 10 Township 1S Range 34E
 County Umatilla Date: 11-04-2004

Corner Designation: T1SR34EF15

_____	Condition Report Only
_____	Not Found
_____	Re monumented
_____	Unrecorded
_____X_____	Surveyed In
_____X_____	Referenced Out

Previous Renewals / Surveys, etc.
 Corner not previously set.

Monument and Accessories Found: (condition and source)

Corner not previously set.

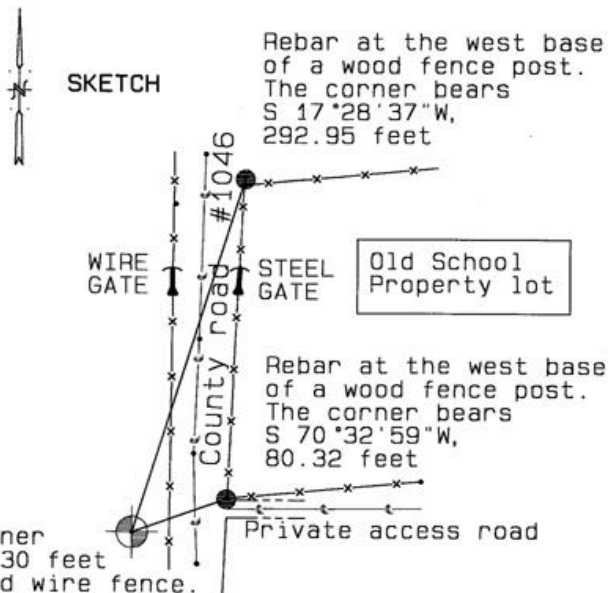
DIAGRAM



2.5" dia. Orange plastic cap

The NC 1/16th corner is approximately 30 feet west of the barbed wire fence.

SKETCH



MONUMENT (S) AND ACCESSORIES SET (Procedures and Description)

Set one 5/8" x 30" steel Iron pin in the ground with a 2.5" dia. Orange plastic cap flush with the ground.
 Set a 5' Steel T-post with a Umatilla County Sign.
 (See attached photographs)

REFERENCES SET:

Set two 5/8"x30" iron rebar with a 1.25" dia. red plastic cap stamped WALS 13922 and ORLS 0852.

As shown in sketch above.

Location and Comments

Compass Declination
 20 °E

Surveyors Seal

From the North center 1/4 corner proceed south down the county road 1325 feet, past the old school house on the east side of the road. The NC 1/16th corner is about 30 feet West of the barbed wire fence on the west side of the road.

REGISTERED
 PROFESSIONAL
 LAND SURVEYOR

RECEIVED BY:

Firm / Agency

Date: 1-25
 Rec'd By: KK
 No. 05-04-B

Haddock Surveying
 P. O. Box 1574
 Pendleton, OR 97801
 (541) 276-2174

David L. Haddock
 OREGON
 JULY 12, 1968
 DAVID L. HADDOCK
 852