

OREGON CORNER REFORMATION FORM

Section 2 Township 1S Range 34E
 County Umatilla Date: Dec. 17, 1997

Corner Designation: 1S34C21

1/4 corner common to sections 1 and 2,
 T1S, R34E, W.M.

Condition Report Only
 Not found
 Remonumented
 Unrecorded
 Surveyed in
 Referenced out

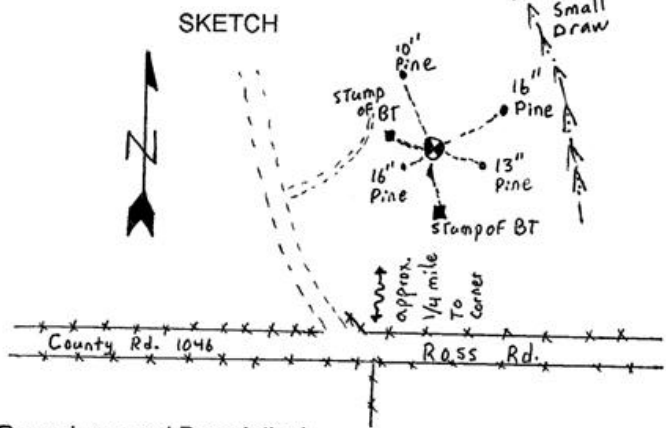
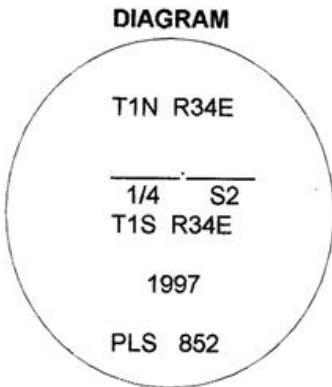
Previous Renewals / Surveys, etc.

Corner established by Currin and Noland under special contract dated July 2, 1887. The record reads "set basalt stone, 18x12x7 ins. , 14ins. in ground marked 1/4 on W. face for 1/4 sec. cor. from which:

- A pine, 12ins. dia. brs. S. 22° E. 55 lks. dist. marked 1/4 S., B.T.
- A pine, 14ins. dia. brs. N. 68° W. 55 lks. dist. marked 1/4 S., B.T.

Monument and Accessories found: (condition and source)

Found 2 clearly scribed bearing stumps and a stone of record dimension lying loose on the ground at record distance from the N.W. bearing tree.



MONUMENT (S) AND ACCESSORIES SET (Procedures and Description)

Set a 2 1/2" Brass cap on a 1 1/4"x30" galvanized iron pipe 27" in the ground at location of loose Stone. The position agreed with the bearing and distance from the N.W. B.T. and the bearing from the S.E. B.T.

REFERENCES SET: Bearing trees with attached 1 1/8" brass washer stamped ORLS 852 and WALS 13922:

- A 10" DBH Ponderosa Pine bears N37°44'W, 65.8 feet;
- A 16" DBH Ponderosa Pine bears N42°58'E, 34.7 feet;
- A 13" DBH Ponderosa Pine bears S69°00'E, 12.4 feet;
- A 16" DBH Ponderosa Pine bears S82°40'W, 15.1 feet;

The monument was set at record position based upon the bearing trees and surveyed using two Wild System 200 GPS Recievers. References were located using a compass and steel tape.

Location and comments

Compass Declination

Surveyors Seal

20°

Firm / Agency
 Haddock Surveying
 Address
 P.O. Box 1574
 Pendleton, Or. 97801
 Party Chief
 Stephen K, Haddock

REGISTERED
 PROFESSIONAL
 LAND SURVEYOR

David L. Haddock

OREGON
 JULY 12, 1968
 DAVID L. HADDOCK
 852

RECEIVED BY:
Umatilla County Surveyor
 Date: 2-98
 Rec'd By: SK
 No. 98-13-R