

OREGON CORNER RESTORATION FORM

Section 30 Township 1 N Range 37 E.

S-2

County Umatilla Date Sept., 1993

CORNER DESIGNATION

northwest 1/16, section 30
corner index: S-2

- Condition Report Only
- Not Found
- Renewed
- Unrecorded
- Surveyed In
- Referenced Out

Previous Renewals/Surveys, etc.

There is no record of any surveys in this area.

Monument(s) and Accessories Found: (Condition and Source)

No monument was found in this area.

Monument Detail

Sketch



Monument Set (Procedures and Description)

At a section subdivision as determined by this survey I set a 3-1/4" aluminum cap on a 2-1/2"x 30" aluminum pipe, 26" in the ground, with a land survey monument and property boundary signs attached to a steel post nearby.

New Accessories

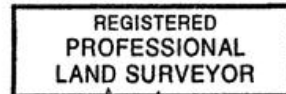
25" douglas fir bears S.23-1/2°E., 42.8 feet scribed NW1/16S30BT.
1-1/2" aluminum cap (PLS 2535) on a 5/8"x 24" rebar bears S.58-1/2°W., 16.3 ft, cap is stamped 16.3 RM with an arrow pointing toward the corner.

I painted a 6" red band around the bearing tree and attached a bearing tree sign on the front with a land survey monument sign on the back. I attached a brass washer "PLS 2535" in the BT portion of the blaze.

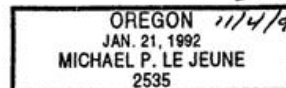
Location & Comments

Compass Declination 18° east
 Firm/Agency: White Shield, Inc
 Address: P.O. Box 477.
Grandview, WA 98930
 Party Chief: Dennis Hartmans
 Notes field bk. 3, pg. 15
 Witness Wes Cochran

Surveyor's Seal



Michael P. Le Jeune



RECEIVED BY
 Umatilla County Surveyor
 Date 12-93
 Rec'd By KR
92-93-B