

R-5

OREGON CORNER RESTORATION FORM

Section 30 Township 1 N Range 37 E.

County Umatilla Date Sept., 1993

CORNER DESIGNATION

section corner 19/20/29/30
corner index: R-5

<input type="checkbox"/>	Condition Report Only
<input type="checkbox"/>	Not Found
<input checked="" type="checkbox"/>	Renewed
<input type="checkbox"/>	Unrecorded
<input type="checkbox"/>	Surveyed In
<input type="checkbox"/>	Referenced Out

Previous Renewals/Surveys, etc.

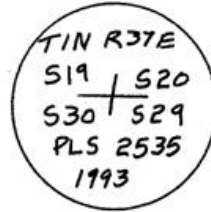
1882 Herman Gradon, set a post, from which:
 18" fir bears N.40°E., 77.2 feet scribed per manual of instruction.
 20" fir bears S.35°E., 9.2 feet scribed per manual of instruction.
 6" fir bears S.50°W., 26.4 feet scribed per manual of instruction.
 4" fir bears N.65°W., 26.4 feet scribed per manual of instruction.

Monument(s) & Accessories Found: (Condition and Source)

I only found the northeast bearing tree which is a 26" douglas fir with a healed face.

Monument Detail

Sketch



Monument Set (Procedures and Description)

At a record bearing and distance from the existing tree I set a 3-1/4" aluminum cap on a 2-1/2"x 30" aluminum pipe, 26" in the ground, with a land survey monument sign attached to a steel post nearby.

New Accessories

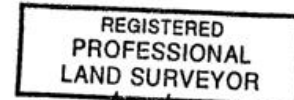
15" douglas fir bears S.17-1/2°E., 13.7 feet scribed T1NR37ES29BT.
 6" douglas fir bears S.45-1/2°W., 13.9 feet scribed XBT.
 15" douglas fir bears N.49°W., 13.8 feet scribed T1NR37ES19BT.
 1-1/2" aluminum cap (PLS 2535) on a 5/8"x 24" rebar bears S.55°W., 8.6 feet, cap is stamped 8.6 RM with an arrow pointing toward the corner.

I painted a 6" red band around all bearing trees and attached a bearing tree sign on the front with a land survey monument sign on the back. On the new bearing trees I attached a brass washer "PLS 2535" in the BT portion of the blaze.

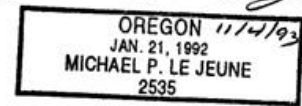
Location & Comments

Compass Declination 18° east
 Firm/Agency: White Shield, Inc
 Address: P.O. Box 477,
Grandview, WA 98930
 Party Chief: Dennis Hartmans
 Notes field bk. 3, pg. 10.11
 Witness Wes Cochran

Surveyor's Seal



Michael P. LeJeune



Umatilla County Surveyor
 Date: 12-93
 Red'd By: KK
 No. 93-93-B