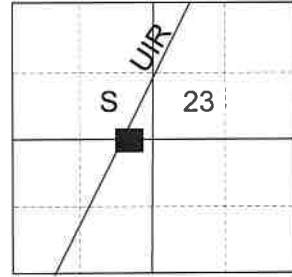


CERTIFIED RECORD OF LAND CORNER MONUMENTATION

HISTORY OF ORIGINAL CORNER ESTABLISHED:

Corner not previously established.

T 1 N R 35 E P-18.5W



DESCRIPTION OF CORNER EVIDENCE FOUND:

None found.

BLM approx. corner bears Southwesterly approx. 25 ft.

DESCRIPTION OF MONUMENT AND ACCESSORIES I ESTABLISHED TO PERPETUATE THE ORIGINAL LOCATION OF THIS CORNER:

At position by Survey I set a 5/8" x 30" iron pin, 28" in the ground, with 2 1/2" aluminum cap marked as shown below, in collar of stone 2' diam., from which:

NEW BEARING OBJECTS:

A 23" White Fir bears South 53° West, a dist. of 39.85 ft., marked LOT 3 CC UIR BT.
A 3" Douglas Fir bears North 58° West, a dist. of 14.20 ft., marked X BT.

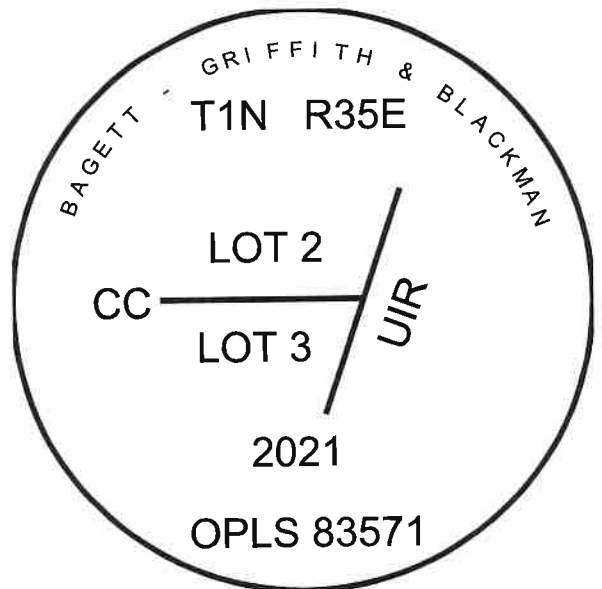
Set steel fence post approx. 1 ft. West

I hereby certify that the corner was monumented on September 21, 2021.

Witness: Kyle A. Tucker, Emmitt Ambert



Renewal Date: June 30, 2023



I used a steel tape and magnetic compass in the establishment of the new accessories. I used 14° East declination. Distances are to a 60d spike driven into the right side of the root crown of the bearing trees. Bearings are to a brass washer marked OPLS 83571 in the BT blaze of the new bearing trees.

P-18.5W

21-125-8