

N-7

OREGON CORNER RESTORATION FORM

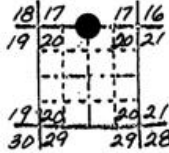
Section 20 Township 1N Range 35E

N-7

County Umatilla Date 11-13-87

Corner Designation

QUARTER CORNER
BETWEEN 17 AND 20



- Condition Report Only
- Not Found
- Renewed
- Unrecorded
- Surveyed In
- Referenced Out

Previous Renewals/Surveys, etc.
G.L.O.- 1887, Krumbein-1979

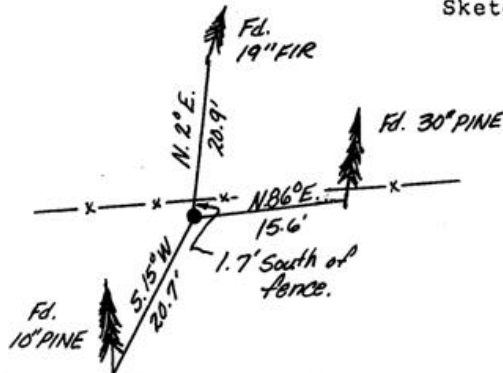
Monument(s) & Accessories Found: (Condition and Source)

- Fd. Brass cup on 2 1/2" G.I.P. 1.0' above ground in a rock mound.
- Fd. 19" Fir N 2°E-20.9' with blaze scar
- Fd. 30" pine N86°E-15.6' with trace of scribes visible in a partially open old blaze.
- Fd. 10" pine S15°W-20.7' with corner tag. no blaze scar.

Monument Detail



Sketch



Monument Set (Procedures and Description)

New Accessories

Location & Comments
Blue Mtn Forest Waysides
west boundary in section
20, T1N, R35E

Compass Declination 20°
Firm/Agency Oregon State
Parks & Recreation Div.
Address 525 Trade Street SE
Salem OR 97310

Seal

REGISTERED
PROFESSIONAL
LAND SURVEYOR

John E. Hollingsworth

OREGON
JULY 9, 1985
JOHN E. HOLLINGSWORTH
691

RECEIVED BY

Umatilla County urn vor
Date 2-88
Rec'd By KA
No. 88-11-B

Party Chief R. Hemmer
Notes R. Hemmer
Witness R. Hill-H. Hanson