

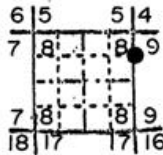
F-9

OREGON CORNER RESTORATION FORM

Section 8 Township 1N Range 35E  
County Umatilla Date 1/6/88

F-9

Corner Designation



W.C. N. 1/16, 8 9

- Condition Report Only
- Not Found
- Renewed
- Unrecorded
- Surveyed In
- Referenced Out

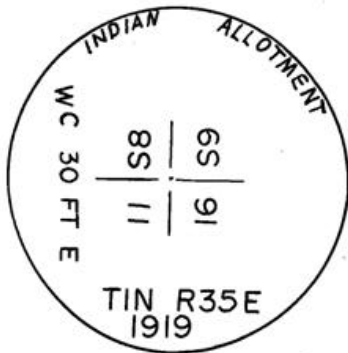
Previous Renewals/Surveys, etc.

Set in Indian Allotment surveys, 1919.

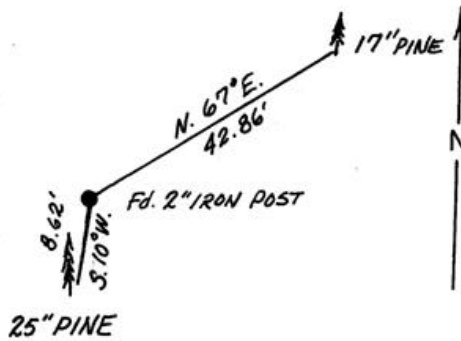
Monument(s) & Accessories Found: (Condition and Source)

Found 2" iron post with brass cap firmly set projecting 12" above ground. The cap indicates this to be a witness corner 30' east of corner. There is no obvious reason why the pipe wasn't set at the corner location, but the pipe is about 30 feet east of a single proportioned position between the corners to the north and south, so I use the corner as a witness point.

Monument Detail



Sketch



Monument Set (Procedures and Description)

None.

New Accessories

17" pine bears N67°E 42,75; to 2 finish nails side and center marked "WPN 1/16 S9 BT".

25" pine bears S10°W, 8.62' to 2 finish nails side and center marked "WPN 1/16 S8 BT".

Set orange Carsonite post 2.0' south marked "N 1/16 8/9 Witness Point 30' East of corner."

Location & Comments

Drawing not to scale.  
References by hand compass and steel tape.

Compass Declination 20°E

Firm/Agency Oregon State Parks & Recreation Div.

Address 525 Trade Street SE Salem OR 97310

Party Chief R.Hill  
Notes R.Hill

Witness L. Boge, H. Hanson

Seal

REGISTERED PROFESSIONAL LAND SURVEYOR

*John E. Hollingsworth*

OREGON JULY 6, 1988 JOHN E. HOLLINGSWORTH 691

RECEIVED BY

Umatilla County Surveyor

Date 1-6-88

Rec'd By JA

No. 88-39-B

4