

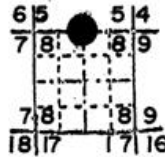
OREGON CORNER RESTORATION FORM

Section 8 Township 1N Range 35E
County Umatilla Date 1/8/88

E-7

Corner Designation

1/4, $\frac{5}{8}$



- Condition Report Only
- Not Found
- Renewed
- Unrecorded
- Surveyed In
- Referenced Out

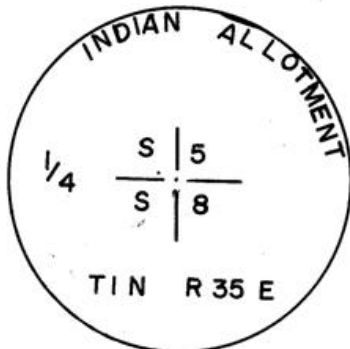
Previous Renewals/Surveys, etc.

Set by Curran & Nolan in 1887. Renewed by Manius Buchanan in 1897. Renewed in Indian Allotment surveys, 1919.

Monument(s) & Accessories Found: (Condition and Source)

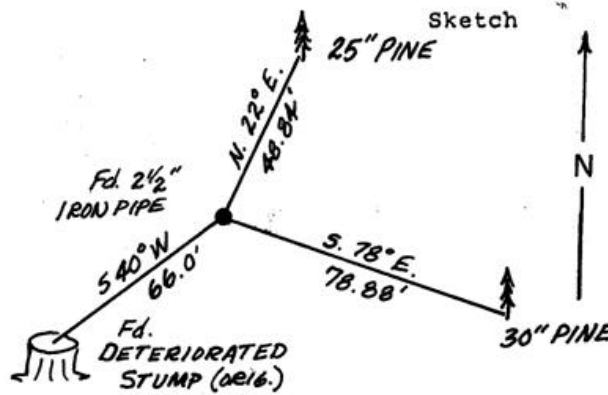
Found 2 1/2" iron pipe firmly set projecting 1' above ground with brass cap from which bears the following original BT's: deteriorated stump S40°W, 66.0 feet, no evidence of NW BT.
A steel fence post bears south 0.5 feet.

Monument Detail



Monument Set (Procedures and Description)

N/A



New Accessories

25" Ponderosa pine bears N22°E, 48.84' to 2 finish nails side and center marked "1/4 S 5 BT".
30" Ponderosa pine bears S78°E, 78.88' to 2 finish nails side and center marked "1/4 S 8 BT".

Location & Comments

Drawing not to scale.
References by hand compass and chain.

Compass Declination 20°E

Firm/Agency Oregon State Parks & Recreation Div.

Address 525 Trade Street SE Salem OR 97310

Party Chief R.Hill
Notes R.Hill

Witness L.Boge, H.Hanson

Seal

REGISTERED PROFESSIONAL LAND SURVEYOR

John E. Hollingsworth

OREGON
JULY 9, 1985
JOHN E. HOLLINGSWORTH
691

RECEIVED BY

Umatilla County Surveyor

Date 6-8-88

Rec'd By RA

No. 88-39-B

