

OREGON CORNER RESTORATION FORM

Section 36 Township 1N Range 32E *Z-21*
 County Umatilla Date 4-15-92

CORNER DESIGNATION

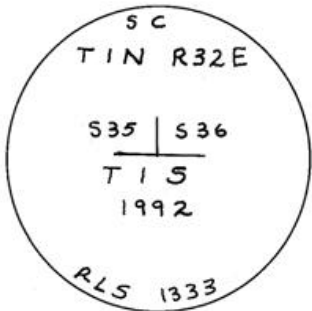
- Condition Report Only
- Not Found
- Renewed
- Unrecorded
- Surveyed In
- Referenced Out

Previous Renewals/Surveys, etc. In 1917, Wilkes found a stone and bearing tree. He then made another reference to the E. on rock bluff.

Monument(s) & Accessories Found: (Condition and Source)

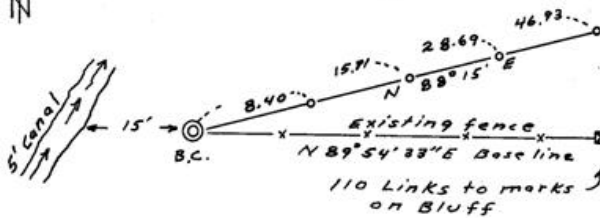
I found the vertical line on the rock bluff and the B O 36 he cut into the rock which are very faint. I measured his 110 links West along the old fence line and dug up an 18" x 14" x 6" stone with a cross on top and 5 notches on the West side and 1 notch on the East side, at the said 110 links tie distance.

Monument Detail



Sketch

Set 4 - 1/2" x 24" steel Pins, ea. with a steel Post & yellow B.O. signs



Monument Set (Procedures and Description)

Set 2 3/8" brass cap on a 1" x 30" G.I.P. w/flare in the ground in the fence line with the existing marked stone along side. B.C. 6" above ground.

New Accessories Detailed above

Set four 1/2" x 24" steel pins as shown above. Each pin has a steel fence post next to it with a yellow bearing object sign attached thereto.

Location & Comments

The B.C. & stone lie 4' West of a large rock fence crib and area is very brushy.

RECEIVED BY

Umatilla County Surveyor

Date 4-92

Rec'd By [Signature]

No. 92-42-B

Compass Declination _____
 Firm/Agency Don Staebler
 Engr.-Surveyor
 Address 1532 SW 41st St.
Pendleton, OR 97801
 Party Chief Don Staebler
 Notes _____
 Witness _____

Surveyor's Seal

