

OREGON CORNER RESTORATION FORM

Section 34 Township 1N Range 32E
 County Umatilla Date: July 25, 1997

Corner Designation: 1N32X17

1/4 corner to sections 34 and 35 T1N, R32E W.M.

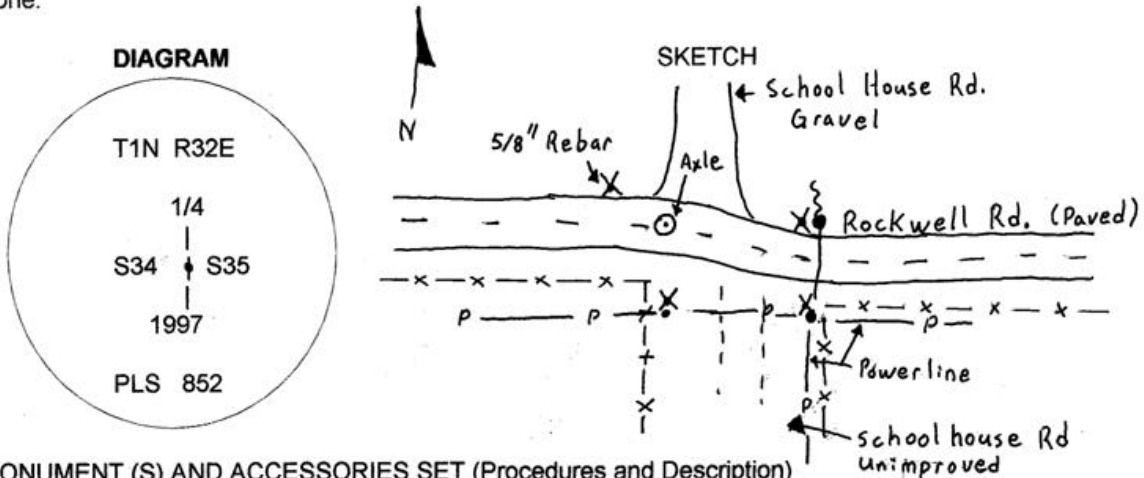
Condition Report Only
 Not found
 Remonumented
 Unrecorded
 Surveyed in
 Referenced out

Previous Renewals / Surveys, etc.

Corner originally set by Daniel Chaplin under contract No. 107 Dated September 21, 1864.
 His record reads: Set post with charred stake and a mound as per instructions.

Partition Plat No. 1996-04 identified this point as a proportioned point between the section corners to the north and south.

Monument and Accessories found: (condition and source)
 None.



MONUMENT (S) AND ACCESSORIES SET (Procedures and Description)

Set a 1 1/4" X 28" car axle with a 3" diameter flange on top at the proportioned point flush with the pavement of Rockwell Road (County Road No. 1064).

For references, I set four 5/8" by 24" rebars with 1.25" red plastic caps stamped ORLS 852 and WALS 13922 as described below:

- a rebar bears N38°08'W, 18.61 feet;
- a rebar bears N70°08'E, 62.14 feet at the foot of a power line brace pole;
- a rebar bears S65°19'E, 65.56 feet at the foot of a power pole;
- a rebar bears S04°17'W, 27.90 feet at the foot of a power pole;

Control was established using GPS receivers. The monument was set and references tied using a Geodimeter system 600, 3 second Electronic Total Station.

Location and comments Compass Declination Surveyors Seal

RECEIVED BY:
 Umatilla County Surveyor
 Date: 7/30/97
 Rec'd By: David H. Haddock
 No. 97-145-B

Firm / Agency
 Haddock Surveying
 Address
 P.O. Box 1574
 Pendleton, Or. 97801
 Party Chief
 Stephen K, Haddock

REGISTERED
 PROFESSIONAL
 LAND SURVEYOR

David L. Haddock

OREGON
 JULY 12, 1988
 DAVID L. HADDOCK
 852

RECEIVED BY
 Umatilla County Surveyor
 Date: _____
 Rec'd By: _____