

**OREGON CORNER RE-MONUMENTATION FORM**

Section 23 Township 1N Range 32E  
 County Umatilla Date: May 15, 2002

Corner Designation: 1N32R21  
 SKH

Condition Report Only  
 Not found  
 Remonumented  
 Unrecorded  
 Surveyed in  
 Referenced out

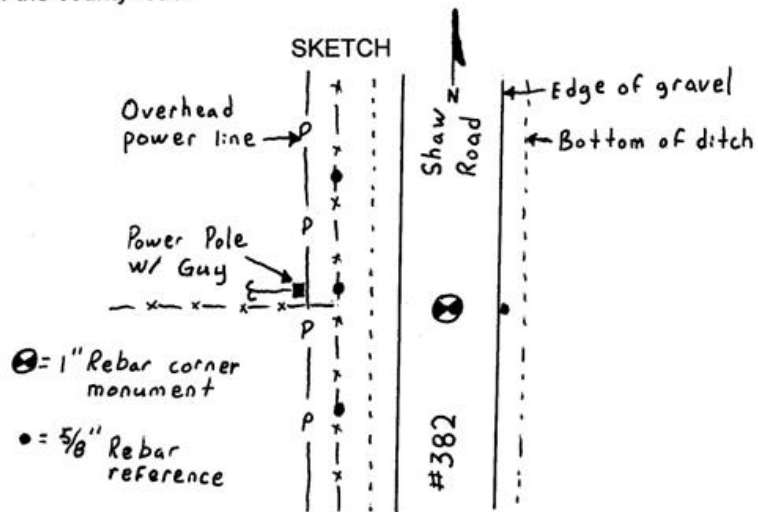
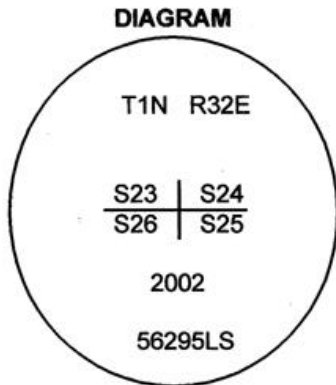
Corner to sections 23, 24, 25, and 26, T1N, R32E,  
 W.M., Umatilla County, Oregon.

Previous Renewals / Surveys, etc.

Corner originally set by Daniel Chaplin under contract No. 107 dated September 21, 1864. His record reads: Set stone 18x10x8 for corner to secs. 23, 24, 25, and 26. Zenas Moody set a new corner under contract No. 164 dated October 4, 1871. His record reads: Set stone 20x18x14 for corner to sections 25, 26, 23 and 24. Currin and Noland, under special instructions dated May 4th, 1887 re-established the corner. Their record reads: To old corner. Reestablished corner. Set stone, 16x10x8 ins., 12 ins. in the ground for 1/4 sec. cor. marked 1/4 on W. face. Dug pits, 18 x 18 x 12 ins., N. and S. from stone, 5 1/2 ft. dist. and raised a mound of earth 1 1/2 ft. high, 3 1/2 ft. base alongside.

Monument and Accessories found: ( condition and source )

None: The point falls in the center of the county road.



**MONUMENT (S) AND ACCESSORIES SET (Procedures and Description)**

Set a 1" x 24" iron rebar with a 2" Aluminum cap stamped as shown in the diagram above at the location as determined by County survey #90-20-B (Krumbein) which is the intersection of the centerline of County Rd. 382 (Shaw Rd.) and an east - west fence.

For references, I set four, 5/8" by 24" rebars with 1.25" orange plastic caps stamped WTS and 56295LS as described below:

- an iron rebar bears N85°44'37"E, 16.46 feet 1 foot below the surface in the shoulder of the road;
- an iron rebar bears N49°43'25"W, 39.21 feet 6 inches below the surface;
- an iron rebar bears S88°48'29"W, 29.56 feet 6 inches below the surface;
- an iron rebar bears S45°18'34"W, 40.25 feet 6 inches below the surface;

The monument and references were tied using a LIECA system 300 RTK GPS.

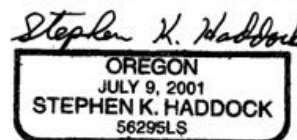
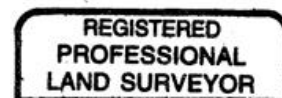
Location and comments

Compass Declination

Surveyors Seal

RECEIVED BY:  
 Umatilla County Surveyor  
 Date: 6-02  
 Rec'd By: KR  
 No. 02-161-B

Firm / Agency  
 Witness Tree Surveying  
 Address  
 P.O. Box G  
 Pilot Rock, Or. 97868  
 Party Chief  
 Stephen K, Haddock



RENEWAL DATE 6-30-03