

OREGON CORNER RESTORATION FORM

Section 23 Township 1N Range 32E
 County Umatilla Date: May 15, 2002

Corner Designation: 1N32P21

SKN

Condition Report Only
 Not found
 Remonumented
 Unrecorded
 Surveyed in
 Referenced out

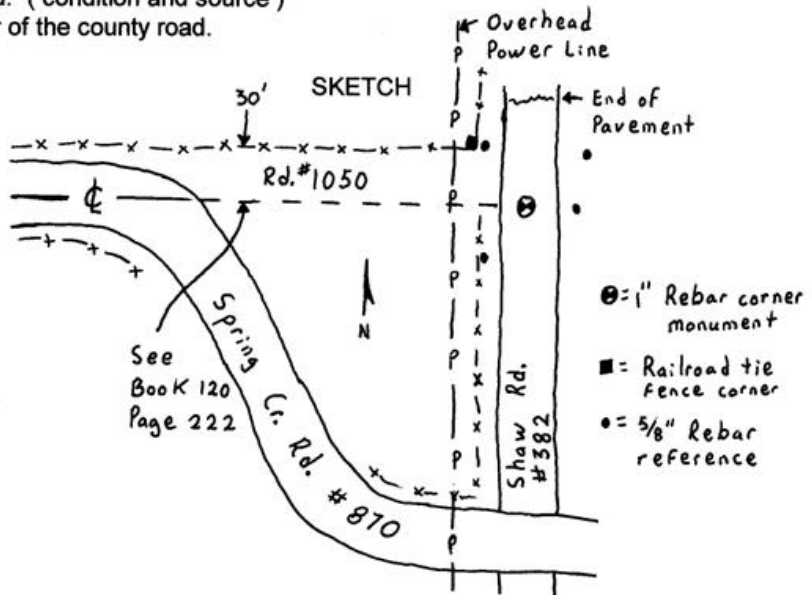
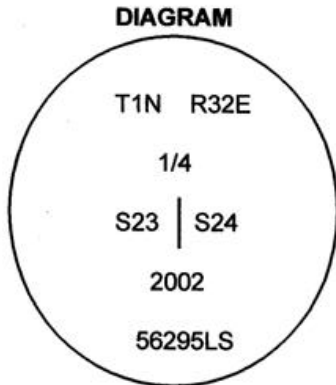
Common quarter corner to sections 23 and 24, T1N, R32E, W.M., Umatilla County, Oregon.

Previous Renewals / Surveys, etc.

Corner originally set by Daniel Chaplin under contract No. 107 dated September 21, 1864. His record reads: Set post for 1/4 sec. corner in mound of earth with charred stake, pits and c. as per instructions. The corner was re-established by Zenas F. Moody under contract No. 164 dated October 4, 1871. His record reads: Set post and made earth mound for 1/4 sec. cor. The corner was re-established by Currin and Noland under special instructions dated May 4, 1887. Their record reads: Set stone, 16x10x8 ins., 12 ins. in the ground for 1/4 sec. cor. marked 1/4 on W. face. Dug pits 18x18x12 ins. N. and S. from stone, 5 1/2 feet dist. and raised a mound of earth 1 1/2 ft. high, 3 1/2' base along side.

Monument and Accessories found: (condition and source)

None: The point falls in the center of the county road.



MONUMENT (S) AND ACCESSORIES SET (Procedures and Description)

Set a 1" x 24" iron rebar with a 2" aluminum cap stamped as shown in the diagram above at the intersection of County Rd. 382 (Shaw Rd.) and County Rd. 1050 (Spring Creek Rd.)

For references, I set four 5/8" by 24" rebars with 1 1/8" orange plastic caps stamped WTS and 56295LS as described below:

- an iron rebar bears N36°59'08"W, 39.08' feet at the corner of the existing fence;
- an iron rebar bears N46°57'40"E, 45.17 feet 18 inches below the surface;
- an iron rebar bears N77°04'59"E, 32.09 feet;
- an iron rebar bears S43°43'23"W, 34.72 feet 4 inches below the surface;

The monument and references were tied using a LIECA system 300 RTK GPS.

Location and comments

Compass Declination

Surveyors Seal

RECEIVED BY:
 Umatilla County Surveyor
 Date: 6-02
 Rec'd By: KK
 No. 02-161-B

Firm / Agency
 Witness Tree Surveying
 Address
 P.O. Box G
 Pilot Rock, Or. 97868
 Party Chief
 Stephen K, Haddock

REGISTERED
 PROFESSIONAL
 LAND SURVEYOR

Stephen K. Haddock

OREGON
 JULY 9, 2001
 STEPHEN K. HADDOCK
 56295LS

RENEWAL DATE 6-30-03