

**OREGON CORNER RESTORATION FORM**

Section 10 Township 1N Range 32E  
 County Umatilla Date: July 30, 2009

Corner Designation: 1N32J17

Corner common to sections 10, 11, 14, and 15,  
 T1N, R32E, W.M., Umatilla County, Oregon.

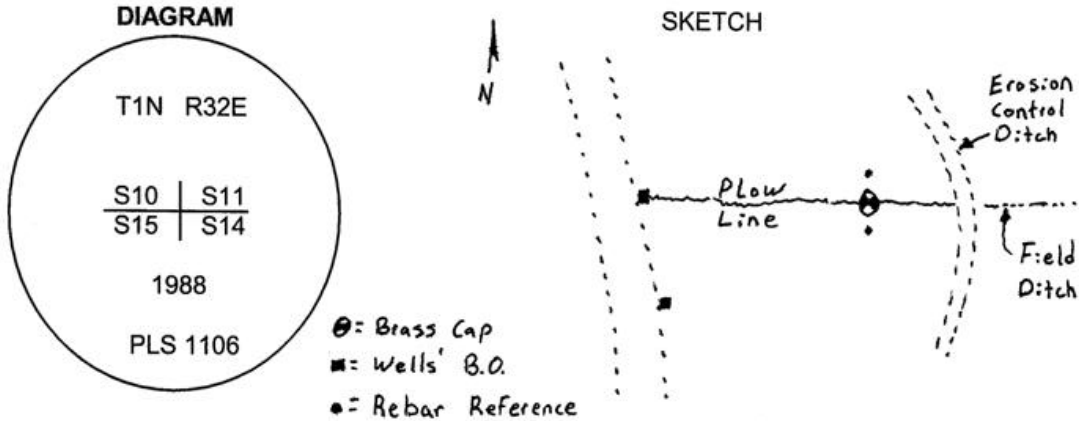
Condition Report Only  
 Not found  
 Remonumented  
 Unrecorded  
 Surveyed in  
 Referenced out

Previous Renewals / Surveys, etc.

Corner was originally set by Daniel Chaplin under contract No. 107 dated September 21, 1864 His record reads: Set post for corner to secs. 10, 11, 14 and 15 in mound of earth with charred stake, pits &c as per instructions. Zenas F. Moody under contract No. 164 dated October 4, 1871, stated: Set post. Currin and Noland under special contract dated May 4, 1887, stated: Set stone, 5 x 8 x 12. The record of survey H-253-B states: set 6 x 7 x 16 stone. William R. Wells, in record of survey 88-20-C, stated: Set brass cap and two reference monuments.

Monument and Accessories found: ( condition and source )

I found the brass cap by wells lying horizontally about 6" below the surface of the field about 2 feet from the corner point. The references set by Wells were still in place.



**MONUMENT (S) AND ACCESSORIES SET (Procedures and Description)**

At the corner point determined from ties to the Wells references and other monuments from survey 88-20-C, I lowered and reset his monument at the true corner point. I did not remark the cap.

For references, I set two, 5/8" by 24" iron rebars with 1 1/4" orange plastic caps stamped WTS and 56295LS as described below:

- an iron rebar bears N00°26'35"E, 33.86 feet, 2 feet below the surface of the plowed field ;
- an iron rebar bears S06°07'07"E, 31.24 feet, 2 feet below the surface of the plowed field;
- the north reference by Wells bears N88°37'41"W, 1250.23 feet;
- the south reference by Wells bears S69°56'55"W, 1148.53 feet;

The monument was set and references were tied using a Trimble R7/R8 RTK GPS system.

Location and comments  
 NAD 83/1991 State Plane Coordinate  
 Oregon North Zone  
 N = 699,649.85 ift  
 E = 8,640,760.38 ift

Compass Declination

Surveyors Seal

RECEIVED BY:  
 Umatilla County Surveyor  
 Date: 6-10  
 Rec'd By: KK  
 No. 10-93-c

Firm / Agency  
 Witness Tree Surveying  
 Address  
 P.O. Box G  
 Pilot Rock, Or. 97868  
 Party Chief  
 Stephen K, Haddock

REGISTERED  
 PROFESSIONAL  
 LAND SURVEYOR

*Stephen K. Haddock*

OREGON  
 JULY 9, 2001  
 STEPHEN K. HADDOCK  
 56295LS

RENEWAL DATE 6-30-11