

OREGON CORNER RESTORATION FORM

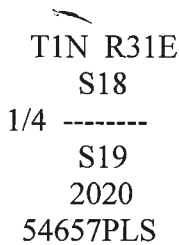
COUNTY: Umatilla. DATE: 04/10/20

CORNER DESIGNATION: N-3, The South One-Quarter Section corner of Section 18, Township 1 North, Range 31 East, W.M.

PREVIOUS RENEWALS/SURVEYS ETC: Corner was originally established by Josiah A. Burnett under Contract No. 92 dated September 12, 1860. Notes state: Set a post for 1/4 Sec. Cor., corner to Secs., drove charred stake and raised mound with trench as per instructions.

MONUMENT AND ACCESSORIES FOUND: None. The corner falls in a farmed area which is currently a CRP field.

MONUMENT MARKING DETAIL:



MONUMENT SET: Reestablished corner position on the parallel of latitude by single proportion measurement between the Southeast and Southwest corners of Section 18. At reestablished corner position, set a 2 1/2" brass cap on 1 1/4 by 30" galvanized iron pipe 28" in the ground. Cap is marked as shown in the Monument Marking Detail. Set steel fence post 1 1/2' South of corner monument and attached Witness sign.

New accessories:

- A silver Deep-1 magnet bears N 43° E, 30.3'.
- A purple Deep-1 magnet bears S 60° E, 29.2'.
- A blue Deep-1 magnet bears S 48° W, 35.3'.
- A silver Deep-1 magnet bears N 54° W, 27.9'.

Buried bearing object signs with the Deep-1 magnets which are buried 18" below ground line.

Used a steel tape and Brunton pocket transit with 14° East declination to measure corner accessories.

LOCATION AND COMMENTS: Corner is located in a CRP field about 100' West of Blanchet Lane.

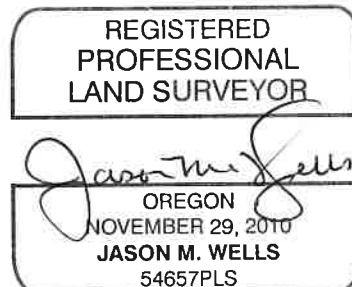
OREGON STATE PLANE COORDINATE, North Zone NAD 83(91), International Feet Units:

N: 693658.20
E: 8590321.25

FIRM: Wells Surveying
P.O. Box 1696
Pendleton, OR 97801

Surveyor's Seal

\1N31N-3



RENEWS: 6/30/20