

OREGON CORNER RESTORATION FORM

COUNTY: Umatilla. DATE: 02/27/20.

CORNER DESIGNATION: J-17, The Northeast corner of Section 14, Township 1 North, Range 31 East, W.M.

PREVIOUS RENEWALS/SURVEYS ETC: Corner was originally established by Josiah A. Burnett under Contract No. 92 dated September 12, 1860. Notes state: Set post for corner to Sec's. 10, 11, 14 and 15 drove charred stake and raised mound with trench as per instructions.

MONUMENT AND ACCESSORIES FOUND: None. I reestablished this corner by double proportion measure using the recovered Southeast corner of Section 15 and East One-Quarter corner of Section 10 for latitude and South One-Quarter corners of Sections 10 and 11 for departure. The area around the corner has been farmed and there are no features except crooked CRP field lines extending East and North. There is a large pile of rock and wire, gathered from adjacent fields, about 40' South of corner point.

MONUMENT MARKING DETAIL:

T1N R31E
S10|S11

S14|S15
· 2020
54657PLS

MONUMENT SET: At reestablished corner position set a 5/8 by 24" pointed rebar in hole drilled in rock and surrounded with a mound of earth and stone. Placed a 2" aluminum cap on rebar marked as shown in Monument Marking Detail. Set a steel fence post North of corner with Witness sign attached.

New accessories:

A silver Deep-1 bears N 19°24' E 34.6' buried 16" below ground.
A 5/8 by 15 rebar with blue plastic cap marked "Wells Surveying 54657PLS" bears S 20°16' E, 73.1'.
A 5/8 by 15 rebar with blue plastic cap marked "Wells Surveying 54657PLS" bears S 11°49' E, 59.6'.
A 5/8 by 15 rebar with blue plastic cap marked "Wells Surveying 54657PLS" bears S 09°27' W, 73.1'.
Accessory rebars are on or near a large dumped rock pile. Wired bearing object signs to rebar accessories and placed bearing object sign below ground with the Deep-1 magnet.
Bearings to accessories are State Plane Grid Bearings.

LOCATION AND COMMENTS: Corner is located at the Southwest corner of an active CRP field. Areas to the South and West appear to have been farmed in the past. The soil around this corner is very shallow.

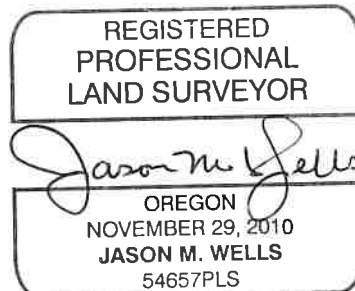
OREGON STATE PLANE COORDINATE, North Zone NAD 83(91), International Feet Units:

N: 699146.18
E: 8608593.62

FIRM: Wells Surveying
P.O. Box 1696
Pendleton, OR 97801

Surveyor's Seal

\1N3J-17



RENEWS: 6/30/20

20-043-C