

OREGON CORNER RESTORATION FORM

SECTION 21,28 TOWNSHIP 1 NORTH RANGE 30 EAST

R-11

COUNTY : UMATILLA

DATE: AUGUST 2007

CORNER DESIGNATION

1/4 CORNER

- CONDITION REPORT ONLY
- NOT FOUND
- RENEWED
- UNCOVERED
- SURVEYED IN
- REFERENCED

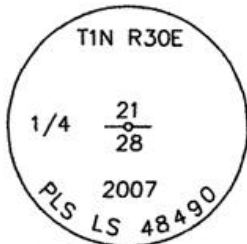
PREVIOUS RENEWALS / SURVEYS, ETC.

ORIGINALLY SURVEYED IN 1858 BY THOMPSON UNDER CONTRACT #79. HE SET A POST IN A MOUND OF EARTH.
 SURVEYED IN 1859 BY THOMPSON UNDER CONTRACT #83. HE SET A POST IN A MOUND OF EARTH.
 SURVEYED IN 1860 BY CARTEE UNDER CONTRACT #88. HE SET A POST IN A MOUND OF EARTH.

MONUMENTS AND ACCESSORIES FOUND: CONDITION AND SOURCE

FOUND OLD POST

MONUMENT DETAIL

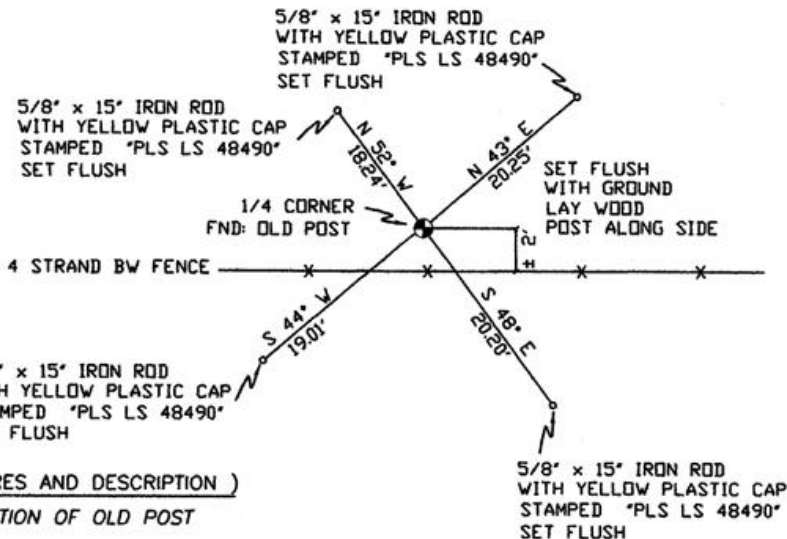


NAD 83/91
 OREGON STATE PLANE
 INTERNATIONAL FEET

688004.0492
 8568536.1686



SKETCH



MONUMENT SET (PROCEDURES AND DESCRIPTION)

SET 2 3/8" BRASS CAP AT LOCATION OF OLD POST

NEW ACCESSORIES FROM WHICH

- A 5/8" x 15" IRON ROD WITH A PLASTIC CAP STAMPED "PLS LS 48490" LIES N 52° W, 18.24 FEET.
- A 5/8" x 15" IRON ROD WITH A PLASTIC CAP STAMPED "PLS LS 48490" LIES N 43° E, 20.25 FEET.
- A 5/8" x 15" IRON ROD WITH A PLASTIC CAP STAMPED "PLS LS 48490" LIES S 48° E, 20.20 FEET.
- A 5/8" x 15" IRON ROD WITH A PLASTIC CAP STAMPED "PLS LS 48490" LIES S 44° W, 19.01 FEET.

LOCATION AND COMMENTS

FROM INTERSECTION OF SLUSHER CANYON WITH WEST BOUNDARY OF TOWNSHIP 1 NORTH, RANGE 30 EAST W.M. GO NORTH ± 0.7 MILES THEN GO EAST ± 2.5 MILES TO CORNER.

COMPASS DEC.

17° EAST

FIRM/AGENCY

PRIMM LAND SURVEYING
 1340 N.E. 4TH STREET
 P.O. BOX 1322
 HERMISTON, OREGON 97838

PARTY CHIEF

BRIT L. PRIMM

NOTES

WITNESS

CODY L. HANSEN

SURVEYOR'S SEAL

REGISTERED
 PROFESSIONAL
 LAND SURVEYOR

Keith P. Primm
 OREGON
 JULY 12, 2005
 KEITH P. PRIMM
 48490

EXPIRATION DATE: 31 JAN 08

07-226C