

# OREGON CORNER RESTORATION FORM

SECTION 24,19,25,30 TOWNSHIP 1 NORTH RANGE 29 EAST R-25  
 COUNTY : UMATILLA DATE: JULY 2007

CORNER DESIGNATION  
 SECTION CORNER

CONDITION REPORT ONLY  
 NOT FOUND  
 RENEWED  
 UNCOVERED  
 SURVEYED IN  
 REFERENCED

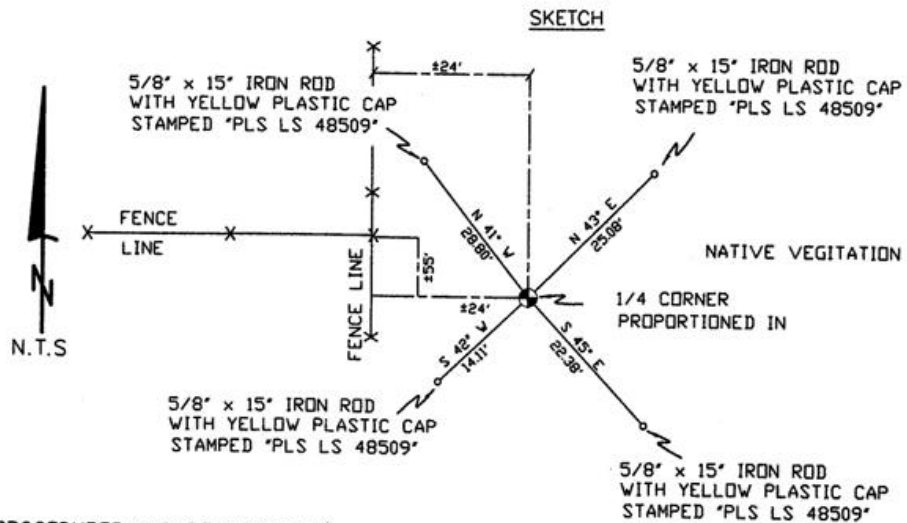
PREVIOUS RENEWALS / SURVEYS, ETC.

ORIGINALLY SURVEYED IN 1858 BY THOMPSON UNDER CONTRACT #79. HE SET A POST IN A MOUND OF EARTH.  
 SURVEYED IN 1859 BY THOMPSON UNDER CONTRACT #83. HE SET A POST IN A MOUND OF EARTH.  
 SURVEYED IN 1860 BY CARTEE UNDER CONTRACT #88. HE SET A POST IN A MOUND OF EARTH.

MONUMENTS AND ACCESSORIES FOUND: CONDITION AND SOURCE

NONE

MONUMENT DETAIL



MONUMENT SET ( PROCEDURES AND DESCRIPTION )

SET 2 3/8" BRASS CAP WITH ROCK COLLAR.  
 SINGLE PROPORTIONED IN FROM FOUND ROCK MOUND WITH WOOD POST MARKING THE N.E. CORNER OF SECTION 13 AND THE FOUND 1" IRON ROD MARKING THE E 1/4 CORNER OF SECTION 25.

NEW ACCESSORIES FROM WHICH

- A 5/8" x 15" IRON ROD WITH A PLASTIC CAP STAMPED "PLS LS 48509" LIES N 41° W, 28.80 FEET.
- A 5/8" x 15" IRON ROD WITH A PLASTIC CAP STAMPED "PLS LS 48509" LIES N 43° E, 25.08 FEET.
- A 5/8" x 15" IRON ROD WITH A PLASTIC CAP STAMPED "PLS LS 48509" LIES S 45° E, 22.38 FEET.
- A 5/8" x 15" IRON ROD WITH A PLASTIC CAP STAMPED "PLS LS 48509" LIES S 42° W, 14.11 FEET.

LOCATION AND COMMENTS

FROM INTERSECTION OF SLUSHER CANYON WITH EAST BOUNDARY OF TOWNSHIP 1 NORTH, RANGE 29 EAST W.M. GO NORTH ± 0.8 MILES TO CORNER.

COMPASS DEC.  
 17° EAST

FIRM/AGENCY  
 PRIMM LAND SURVEYING  
 1340 N.E. 4TH STREET  
 P.O. BOX 1322  
 HERMISTON, OREGON 97838

PARTY CHIEF  
 BRIT L. PRIMM

NOTES

WITNESS  
 CODY L. HANSEN

SURVEYOR'S SEAL

REGISTERED PROFESSIONAL LAND SURVEYOR

*Brit L. Primm*  
 OREGON  
 JULY 13, 1999  
 BRIT L. PRIMM  
 48509

EXPIRATION DATE: 31 JAN 08

07-260-C