

# OREGON CORNER RESTORATION FORM

SECTION 17,18,19,20 TOWNSHIP 1 NORTH RANGE 30 EAST N-5  
 COUNTY : UMATILLA DATE: AUGUST 2007

CORNER DESIGNATION  
 SECTION CORNER

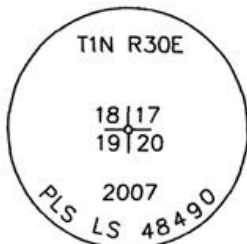
\_\_\_ CONDITION REPORT ONLY  
 \_\_\_ NOT FOUND  
 \_\_\_ RENEWED  
 UNCOVERED  
 \_\_\_ SURVEYED IN  
 REFERENCED

PREVIOUS RENEWALS / SURVEYS, ETC.

ORIGINALLY SURVEYED IN 1858 BY THOMPSON UNDER CONTRACT #79. HE SET A POST IN A MOUND OF EARTH.  
 SURVEYED IN 1859 BY THOMPSON UNDER CONTRACT #83. HE SET A POST IN A MOUND OF EARTH.  
 SURVEYED IN 1860 BY CARTEE UNDER CONTRACT #88. HE SET A POST IN A MOUND OF EARTH.

MONUMENTS AND ACCESSORIES FOUND: CONDITION AND SOURCE  
 FOUND ROCK MOUND

MONUMENT DETAIL

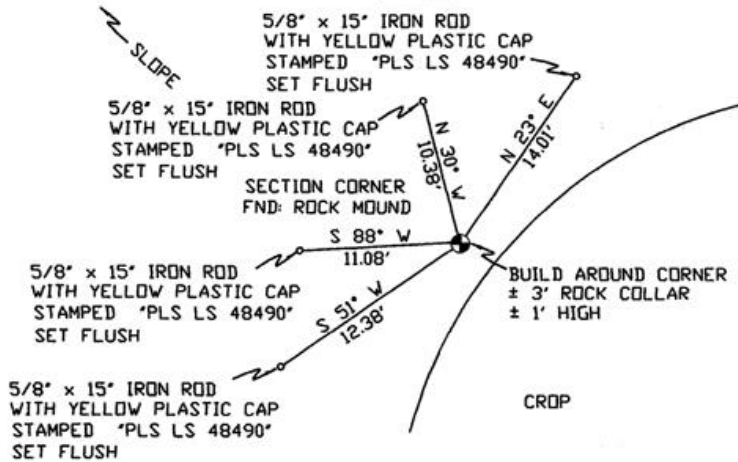


NAD 83/91  
 OREGON STATE PLANE  
 INTERNATIONAL FEET

693075.5301  
 8560549.2098



SKETCH



MONUMENT SET ( PROCEDURES AND DESCRIPTION )

SET 2 3/8" BRASS CAP AT LOCATION OF ROCK MOUND

NEW ACCESSORIES FROM WHICH

- A 5/8" x 15" IRON ROD WITH A PLASTIC CAP STAMPED "PLS LS 48490" LIES N 30° W, 10.38 FEET.
- A 5/8" x 15" IRON ROD WITH A PLASTIC CAP STAMPED "PLS LS 48490" LIES N 23° E, 14.01 FEET.
- A 5/8" x 15" IRON ROD WITH A PLASTIC CAP STAMPED "PLS LS 48490" LIES S 51° W, 12.38 FEET.
- A 5/8" x 15" IRON ROD WITH A PLASTIC CAP STAMPED "PLS LS 48490" LIES S 88° W, 11.08 FEET.

LOCATION AND COMMENTS

FROM INTERSECTION OF SPIKES  
 GULCH WITH WEST BOUNDARY  
 OF TOWNSHIP 1 NORTH, RANGE  
 30 EAST W.M. GO NORTH ± 0.2  
 MILES THEN GO EAST ± 1.0  
 MILES TO CORNER.

COMPASS DEC.

17° EAST

FIRM/AGENCY

PRIMM LAND SURVEYING  
 1340 N.E. 4TH STREET  
 P.O. BOX 1322  
 HERMISTON, OREGON 97838

PARTY CHIEF

KEITH P. PRIMM

NOTES

WITNESS

BRIT L. PRIMM

SURVEYOR'S SEAL

REGISTERED  
 PROFESSIONAL  
 LAND SURVEYOR

*Keith P. Primm*  
 OREGON  
 JULY 12, 2005  
 KEITH P. PRIMM  
 48490

EXPIRATION DATE: 31 JAN 08

07-276-c