

# OREGON CORNER RESTORATION FORM

SECTION 1 TOWNSHIP 1 NORTH RANGE 29 EAST

C-25

COUNTY : UMATILLA DATE: JUNE 2007

CORNER DESIGNATION

1/4 CORNER

- CONDITION REPORT ONLY
- NOT FOUND
- RENEWED
- UNCOVERED
- SURVEYED IN
- REFERENCED

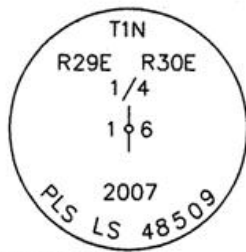
PREVIOUS RENEWALS / SURVEYS, ETC.

ORIGINALLY SURVEYED IN 1858 BY THOMPSON UNDER CONTRACT #79. HE SET A POST IN A MOUND OF EARTH.  
 SURVEYED IN 1859 BY THOMPSON UNDER CONTRACT #83. HE SET A POST IN A MOUND OF EARTH.  
 SURVEYED IN 1860 BY CARTEE UNDER CONTRACT #88. HE SET A POST IN A MOUND OF EARTH.

MONUMENTS AND ACCESSORIES FOUND: CONDITION AND SOURCE

FOUND ROCK MOUND WITH DECAYED WOOD POST

MONUMENT DETAIL

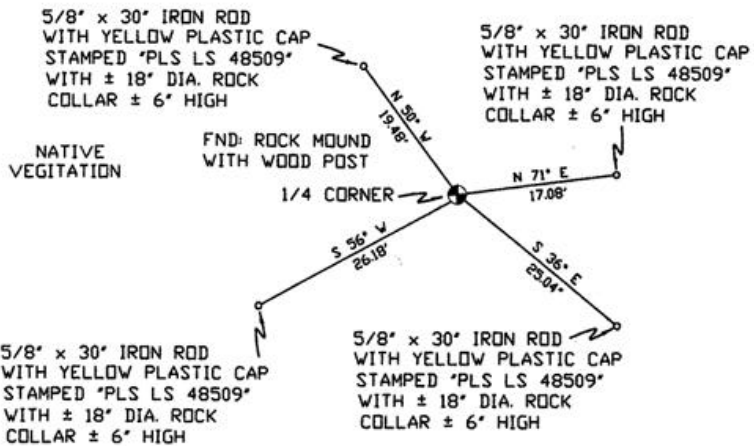


NAD 83/91  
 OREGON STATE PLANE  
 INTERNATIONAL FEET

706250.1327  
 8554635.3108



SKETCH



MONUMENT SET ( PROCEDURES AND DESCRIPTION )

SET 2 3/8" BRASS CAP WITH ± 3' DIA. COLLAR ± 1' HIGH  
 LAY DECAYED WOOD POST ALONG SIDE.

NEW ACCESSORIES FROM WHICH

- A 5/8" x 30" IRON ROD WITH A PLASTIC CAP STAMPED "PLS LS 48509" LIES N 50° W, 19.48 FEET.
- A 5/8" x 30" IRON ROD WITH A PLASTIC CAP STAMPED "PLS LS 48509" LIES N 71° E, 17.08 FEET.
- A 5/8" x 30" IRON ROD WITH A PLASTIC CAP STAMPED "PLS LS 48509" LIES S 36° E, 25.04 FEET.
- A 5/8" x 30" IRON ROD WITH A PLASTIC CAP STAMPED "PLS LS 48509" LIES S 56° W, 26.18 FEET.

LOCATION AND COMMENTS

FROM INTERSECTION OF ALKALI CANYON WITH EAST BOUNDARY OF TOWNSHIP 1 NORTH, RANGE 29 EAST W.M. GO NORTH ± 0.1 MILE TO CORNER.

COMPASS DEC.

17° EAST

FIRM/AGENCY

PRIMM LAND SURVEYING  
 1340 N.E. 4TH STREET  
 P.O. BOX 1322  
 HERMISTON, OREGON 97838

PARTY CHIEF

KEITH P. PRIMM

NOTES

WITNESS

CODY L. HANSEN

SURVEYOR'S SEAL

REGISTERED  
 PROFESSIONAL  
 LAND SURVEYOR

*Brit L. Primm*

OREGON  
 JULY 13, 1999  
 BRIT L. PRIMM  
 48509

EXPIRATION DATE: 31 JAN 08

07-260-C