

OREGON CORNER RESTORATION FORM

SECTION 24,25 TOWNSHIP 1 NORTH RANGE 29 EAST

R-23

COUNTY : UMATILLA DATE: JULY 2007

CORNER DESIGNATION

1/4 CORNER

- CONDITION REPORT ONLY
- NOT FOUND
- RENEWED
- UNCOVERED
- SURVEYED IN
- REFERENCED

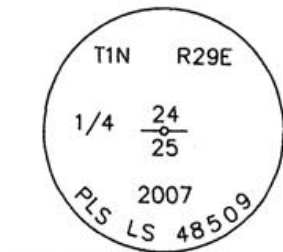
PREVIOUS RENEWALS / SURVEYS, ETC.

ORIGINALLY SURVEYED IN 1858 BY THOMPSON UNDER CONTRACT #79. HE SET A POST IN A MOUND OF EARTH.
 SURVEYED IN 1859 BY THOMPSON UNDER CONTRACT #83. HE SET A POST IN A MOUND OF EARTH.
 SURVEYED IN 1860 BY CARTEE UNDER CONTRACT #88. HE SET A POST IN A MOUND OF EARTH.

MONUMENTS AND ACCESSORIES FOUND: CONDITION AND SOURCE

FOUND 1" IRON ROD

MONUMENT DETAIL

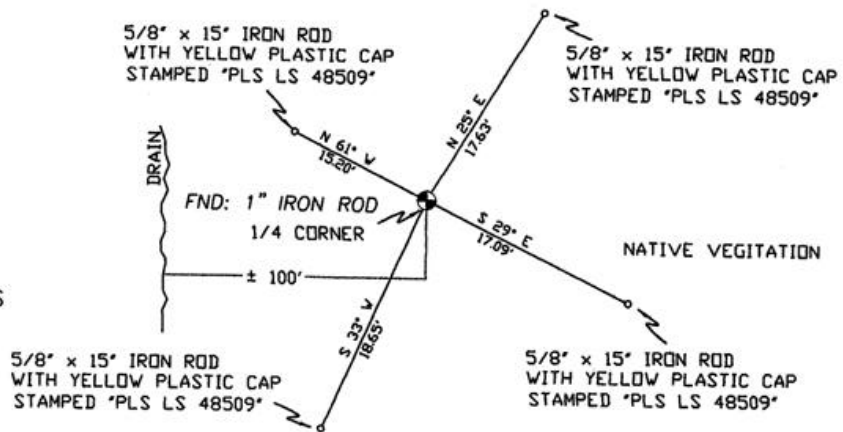


NAD 83/91
 OREGON STATE PLANE
 INTERNATIONAL FEET

687739.7605
 8552293.0570



SKETCH



MONUMENT SET (PROCEDURES AND DESCRIPTION)

SET 2 3/8" BRASS CAP AT LOCATION OF 1" IRON ROD.
 LAY 1" IRON ROD ALONG SIDE.

NEW ACCESSORIES FROM WHICH

- A 5/8" x 15" IRON ROD WITH A PLASTIC CAP STAMPED "PLS LS 48509" LIES N 61° W, 15.20 FEET.
- A 5/8" x 15" IRON ROD WITH A PLASTIC CAP STAMPED "PLS LS 48509" LIES N 25° E, 17.63 FEET.
- A 5/8" x 15" IRON ROD WITH A PLASTIC CAP STAMPED "PLS LS 48509" LIES S 29° E, 17.09 FEET.
- A 5/8" x 15" IRON ROD WITH A PLASTIC CAP STAMPED "PLS LS 48509" LIES S 33° W, 18.65 FEET.

LOCATION AND COMMENTS

FROM INTERSECTION OF SLUSHER CANYON WITH EAST BOUNDARY OF TOWNSHIP 1 NORTH, RANGE 29 EAST W.M. GO NORTH ± 0.8 MILES, THEN GO WEST ± 0.5 MILES TO CORNER.

COMPASS DEC.
 17° EAST

FIRM/AGENCY
 PRIMM LAND SURVEYING
 1340 N.E. 4TH STREET
 P.O. BOX 1322
 HERMISTON, OREGON 97838

PARTY CHIEF
 BRIT L. PRIMM

NOTES

WITNESS
 CODY L. HANSEN

SURVEYOR'S SEAL

REGISTERED
 PROFESSIONAL
 LAND SURVEYOR

Brit L. Primm

OREGON
 JULY 13, 1999
 BRIT L. PRIMM
 48509

EXPIRATION DATE: 31 JAN 08

07-260-C