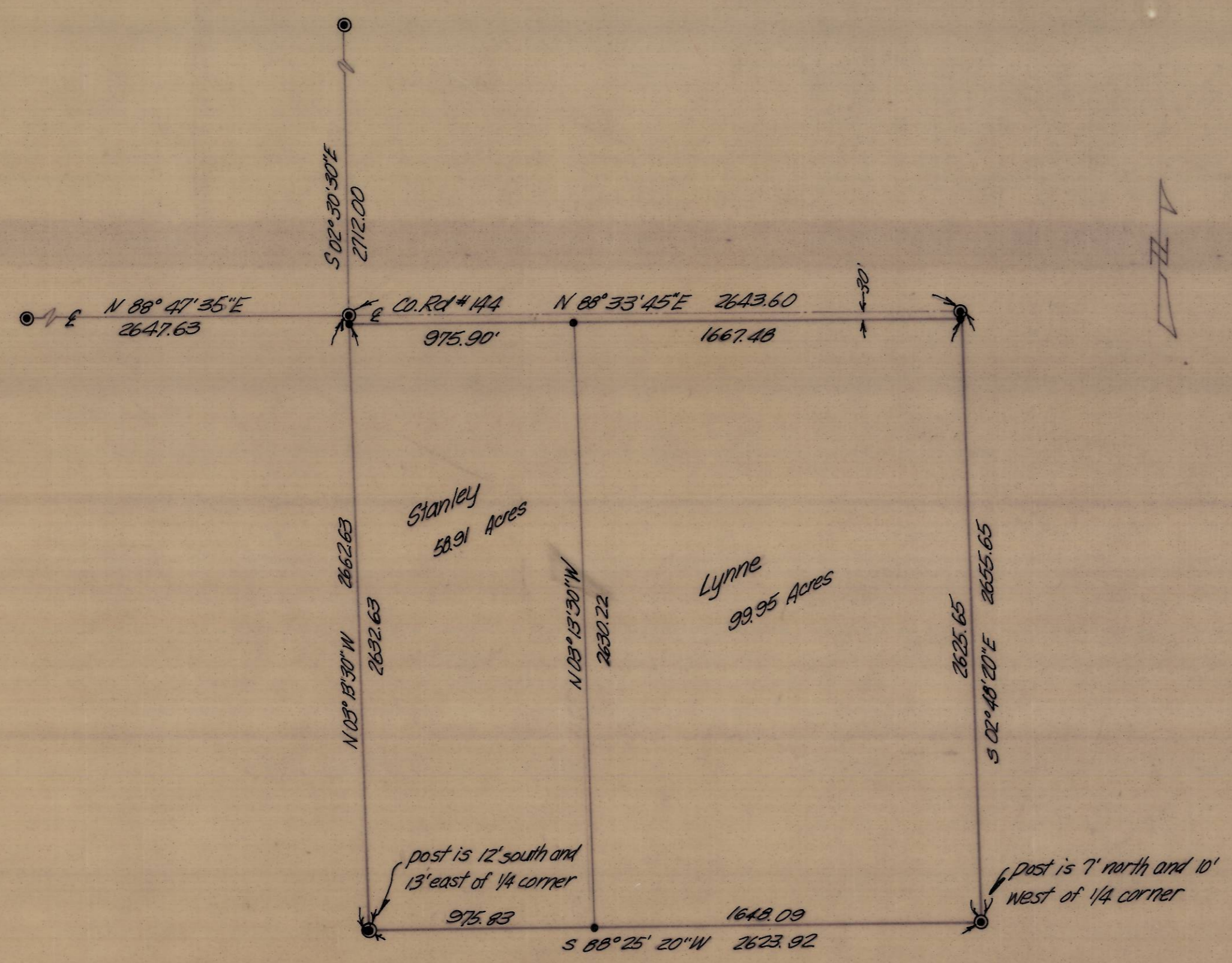
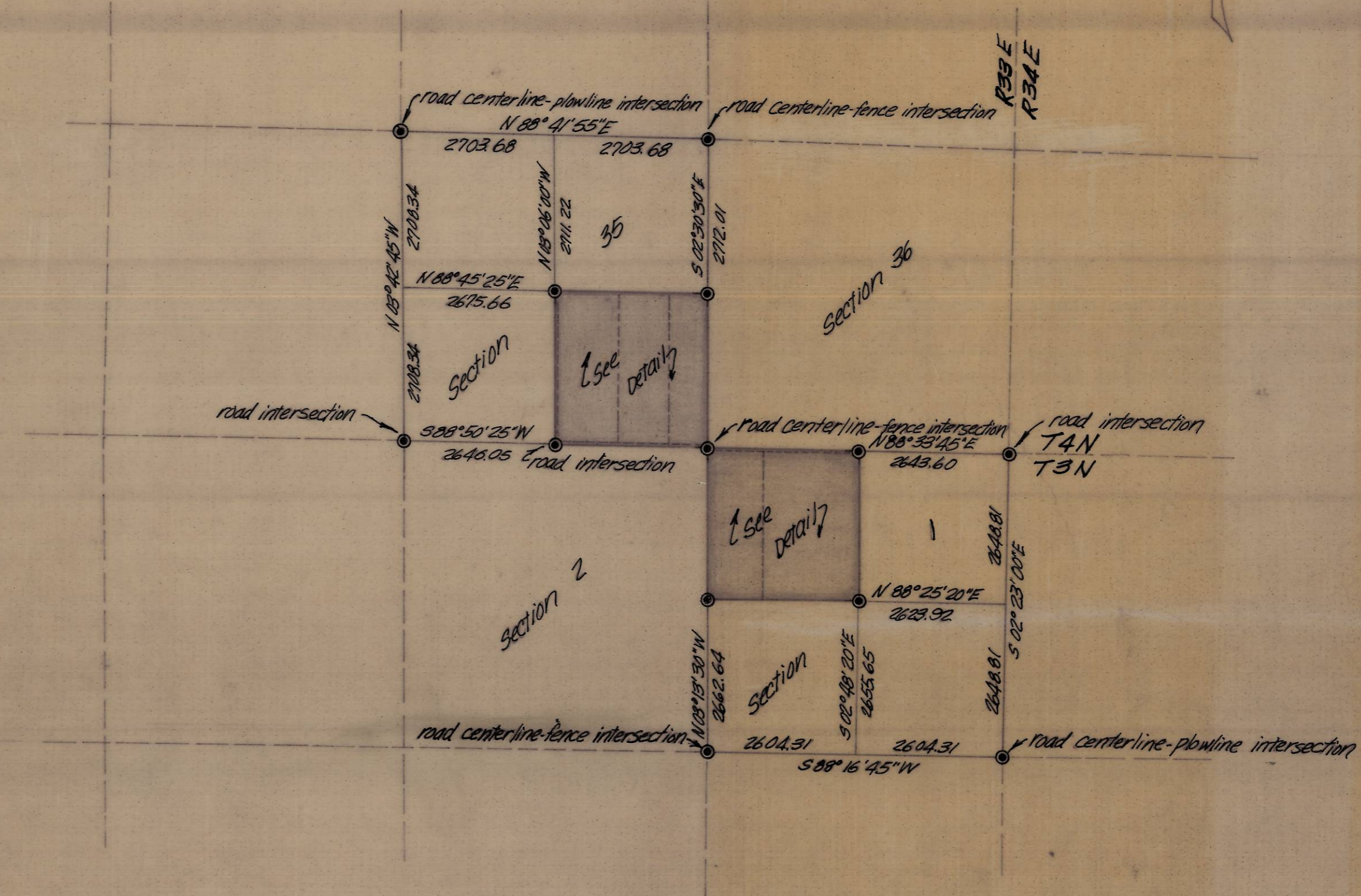


Detail: 1"=500'
S.E. 1/4, Section 35, T4N, R33E, W.M.



Detail: 1"=500'
N.W. 1/4, Section 1, T3N, R33E, W.M.



Section Breakdown
1"=2000'

NOTES:
All bearings shown are grid bearings base N.G.S. station 'Adams'.
Distances shown are true.
No well defined monuments were found in the area. The road intersections, fence lines and plowlines noted were verified for one mile past the points shown for continuity. All points used have been long accepted by property owners as being the corners.

LEGEND
• - Set 5/8" iron pin
● - Set brass cap

REGISTERED PROFESSIONAL LAND SURVEYOR
David H. Krumben
OREGON
DAVID H. KRUMBEIN
933

KRUMBEIN ENGINEERING CO.
ENGINEERS - SURVEYORS - PLANNERS
216 S.E. 1st, Pendleton, Oregon
Survey for Timmermann's
S.E. 1/4, Section 35, T4N, R33E, W.M.
N.W. 1/4, Section 1, T3N, R33E, W.M.