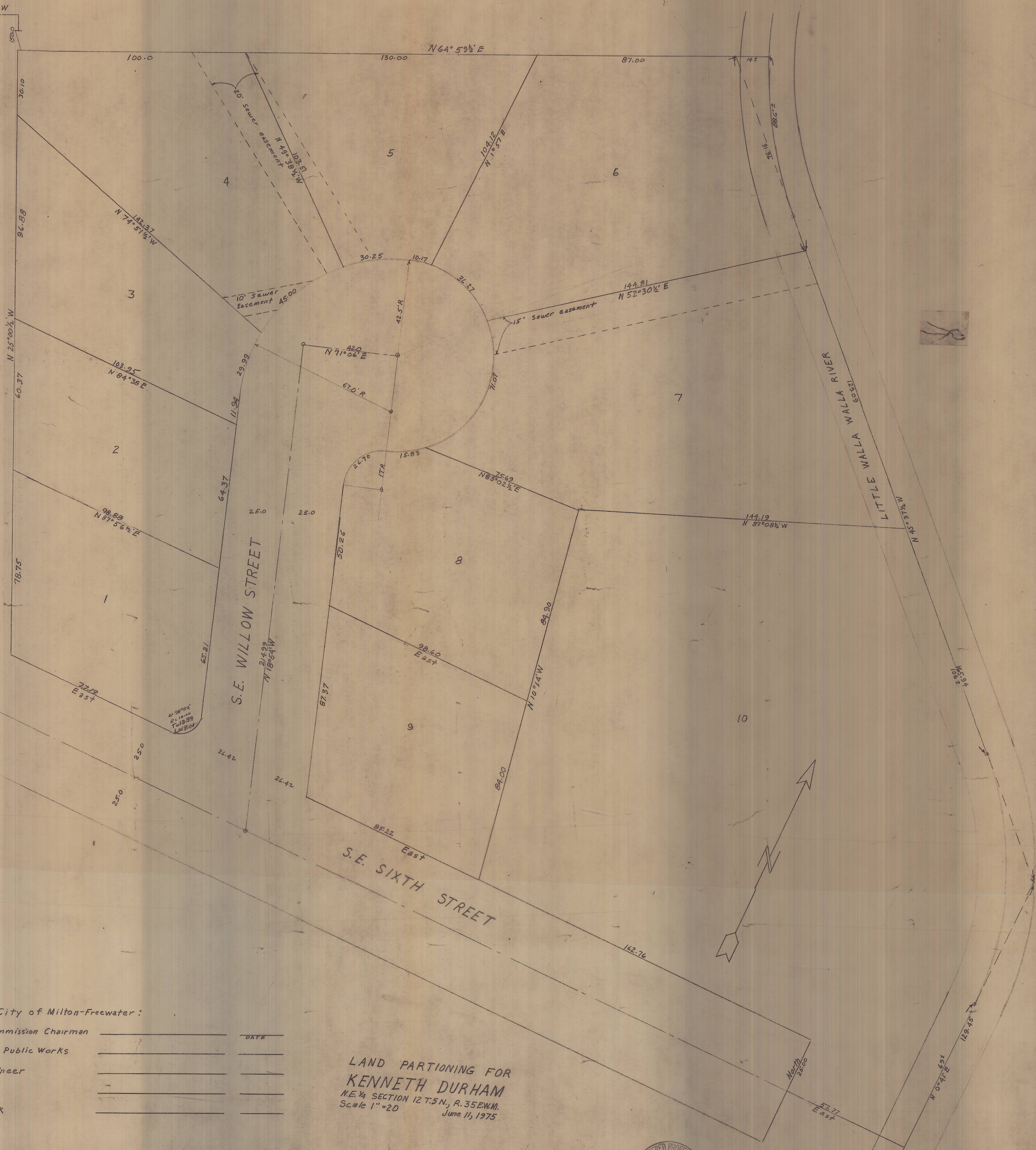


Initial point N.E. corner
 Lot 1 Block 2 Ireland's
 Addition.

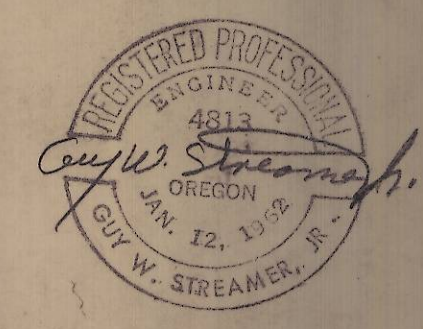


Approved City of Milton-Freewater:

Planning Commission Chairman	_____	DATE	_____
Director of Public Works	_____		_____
City Engineer	_____		_____
Mayor	_____		_____

Attested: City Clerk _____

LAND PARTIONING FOR
 KENNETH DURHAM
 N.E. 1/4 SECTION 12 T.5 N., R. 35 E. W.M.
 Scale 1" = 20'
 June 11, 1975



J-160-C