

# BASIS OF BEARING

True geodetic North at the Southwest corner of Section 19, Township 1 North, Range 35 East of the Willamette Meridian, as determined by GPS observation

SCALE: 1" = 600'

## LEGEND

- Found monument as described, marked as per Umatilla County Monumentation Records.
- Found 2 1/2" Brass cap set by Survey Number 03-274-C (M-045-C)
- Found 1/2" square spike with 1" round head set by Survey Number 09-118-B unless otherwise noted
- Found 5/8" iron pin with aluminum cap marked "OREGON STATE PARKS" set by Survey Number S-124-B
- Set 2 1/2"x30" aluminum pipe with 3" aluminum cap, marked as per Umatilla County Monumentation Records, filed separately
- Set 5/8"x30" iron pin rebar with 1 1/2" aluminum cap, marked as per Umatilla County Monumentation Records, filed separately
- ( ) Record measurement as per GLO Special Contract dated May 4, 1887, executed by Noland and Currin
- [ ] Record measurement as per Survey Number 03-274-C (M-045-C)
- < > Record measurement as per Survey Number 83-151-B
- - Record measurement as per Survey Number 09-118-B
- ^ ^ Record measurement as per Survey Number 10-092-C
- { } Record measurement as per Survey Number 13-521-B
- / / Record measurement as per Survey Number S-124-B
- \* \* Record measurement as per Survey Number 95-169-B
- Fence post set on line
- Fence

## REFERENCE MATERIAL

Umatilla County Monumentation Records  
 Survey Number 03-274-C (M-045-C)  
 Survey Number S-124-B  
 Survey Number 83-151-B  
 Survey Number 88-012-B  
 Survey Number 95-016-C  
 Survey Number 95-169-B  
 Survey Number 09-118-B  
 Survey Number 10-092-C  
 Survey Number 13-521-B

Field Notes from GLO Contract dated May 4, 1887, executed by James P. Currin and James E. Noland

DEED REFERENCES  
 Microfilm Document Number 2013-6120654

## NARRATIVE

This survey was done at the request of Todd Kurtz, on behalf of Manulife, land manager of the land within. Mr. Kurtz wanted select property corners set and the line marked fenceposts in preparation for a timber harvest. I recover the monuments as shown hereon. Monuments interior to Section 31 were originally surveyed by Chris Palmer in Survey 03-274-C (also filed as M-045-C) in 1975. Survey S-124-B, by Hollingsworth, found a section corner on Palmer at the Northeast corner of Section 31. Survey 83-151-B, by Dave Krumbien, set several corners on the East line of Section 31 based on the Palmer and the Hollingsworth surveys. Survey 95-169-B reset the North quarter corner at proportionate position based on the found NE section corner. Survey 09-118-B, by Bill Wells, subdivided Section 31, noting some mathematical errors on the West line with the Palmer proportion and also reset the Center 1/4 corner. This survey notes some of the interior corners on the Palmer survey and their relative position to a true section break but does not reset them.

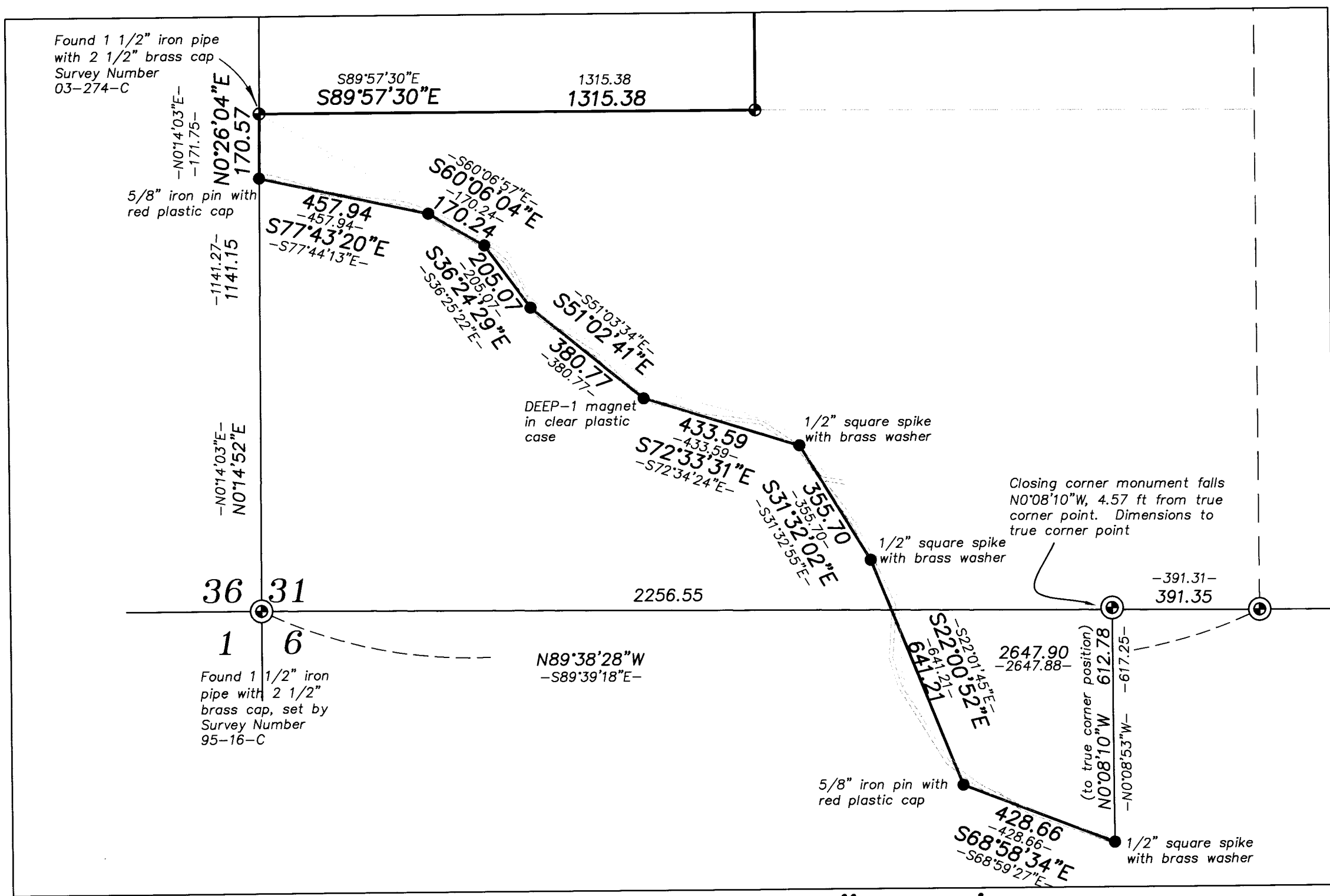
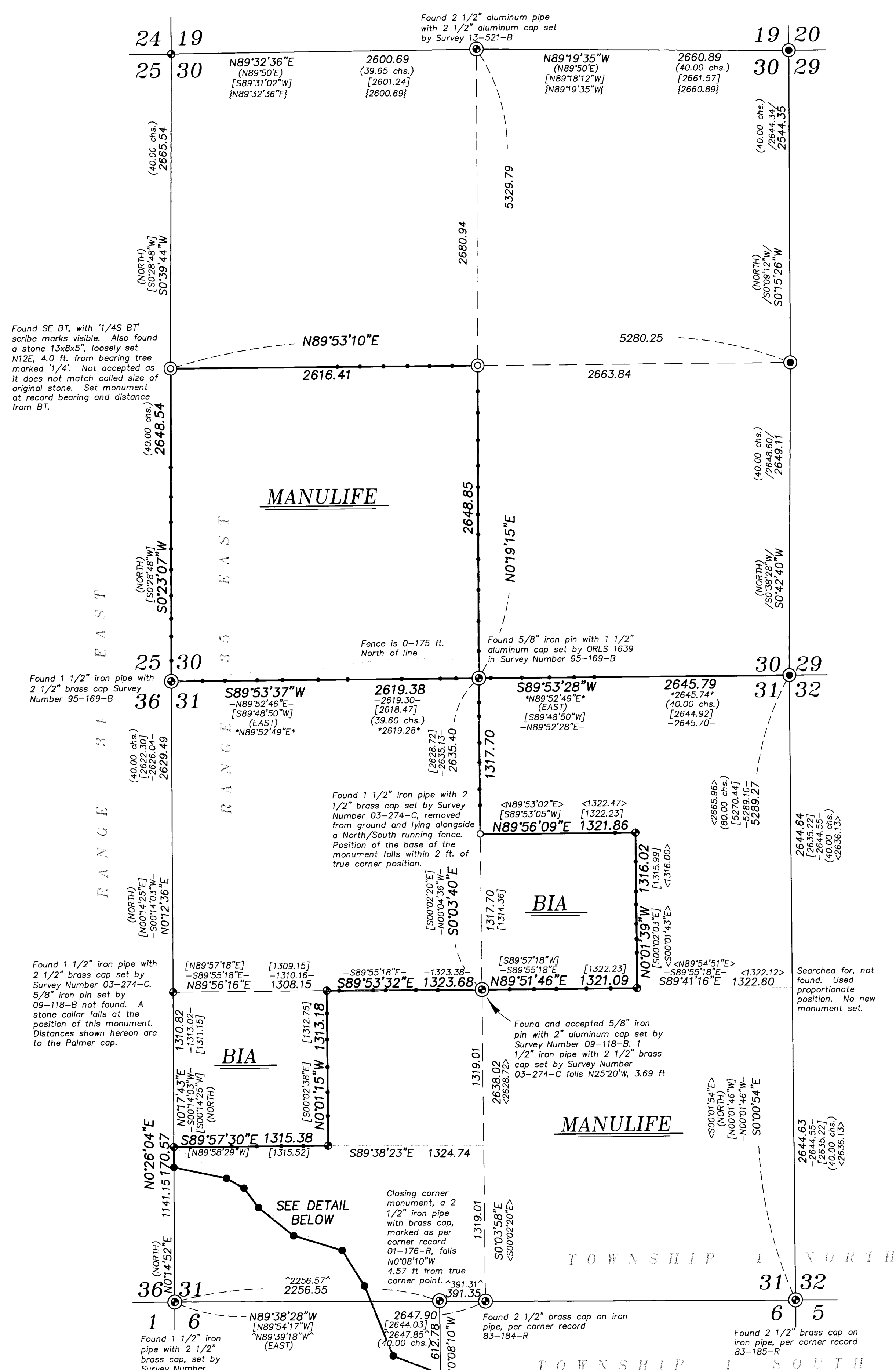
I begin by subdividing the section based on a retracement of Survey 09-118-B. Though I find this to be an undeniably more accurate section subdivision than the Palmer section subdivision, it is difficult to ignore the existence of monuments set by Palmer due to their long standing nature and apparent use of these monuments by both fencing activities and timber management, as evidenced by blazed lines. True positions by the Wells section subdivision places the Palmer corners within approximately 3-7 feet within the South half of the Section. The Northeast sixteenth corner is less than two feet.

As these monuments are of a long standing nature, being almost 50 years old, as well as the fact that they fall within a tolerance not grossly discordant with a section break as per Survey 09-118-B, I find that reliance on these corners would have been reasonable by landowners given the nature of the land. I conclude that, despite the correct location for the controlling corners not being used in the placement of these corners, these corners do meet the definition of 'good faith location' of a local point, as described in Chapter 6, Section 35-37 of the BLM Manual of Instructions. I therefore accept them in place. I do accept the Wells corner at the center quarter position over the Palmer corner. This monument appears to be the one utilized for fencing.

The monument set on the West line of Section 31 at the terminus of the road, set by Survey 09-118-B, would technically fall offline with acceptance of the existing brass caps. Due to the fact that this monument too was set by accurate retracement of the Section line, I also accept this monument in place an angle point in the section line.

The Center-North 1/16th corner was found removed and lying horizontally alongside a recently constructed fence. I reset this corner as per BLM Manual of Instructions. This position falls in line with said fence line.

I subdivide Section 30 as per BLM Manual of Instructions 2009. Fencelines are off as shown. I find no other unusual conditions with this survey.



DETAIL SCALE: 1" = 300'

RECEIVED BY  
 Umatilla County Surveyor  
 Date: 11/22/23  
 Rec'd By: CT  
 No.: 23-104-C

REGISTERED PROFESSIONAL LAND SURVEYOR  
 OREGON  
 JEFFREY S. HSU  
 83571  
 Renewal Date: June 30, 2025

BAGETT, GRIFFITH & BLACKMAN  
 2006 Adams Avenue, LaGrande, Oregon  
 Map of Survey  
 Situate in Section 30 and 31, Township 1 North, Range 35 East of the Willamette Meridian  
 UMATILLA COUNTY, OREGON  
 SURVEYED FOR: Manulife Property Management  
 SURVEYED BY: J. S. H.  
 Scale: 1" = 600' Drawn by: J. S. H. Oct./Nov. 2023