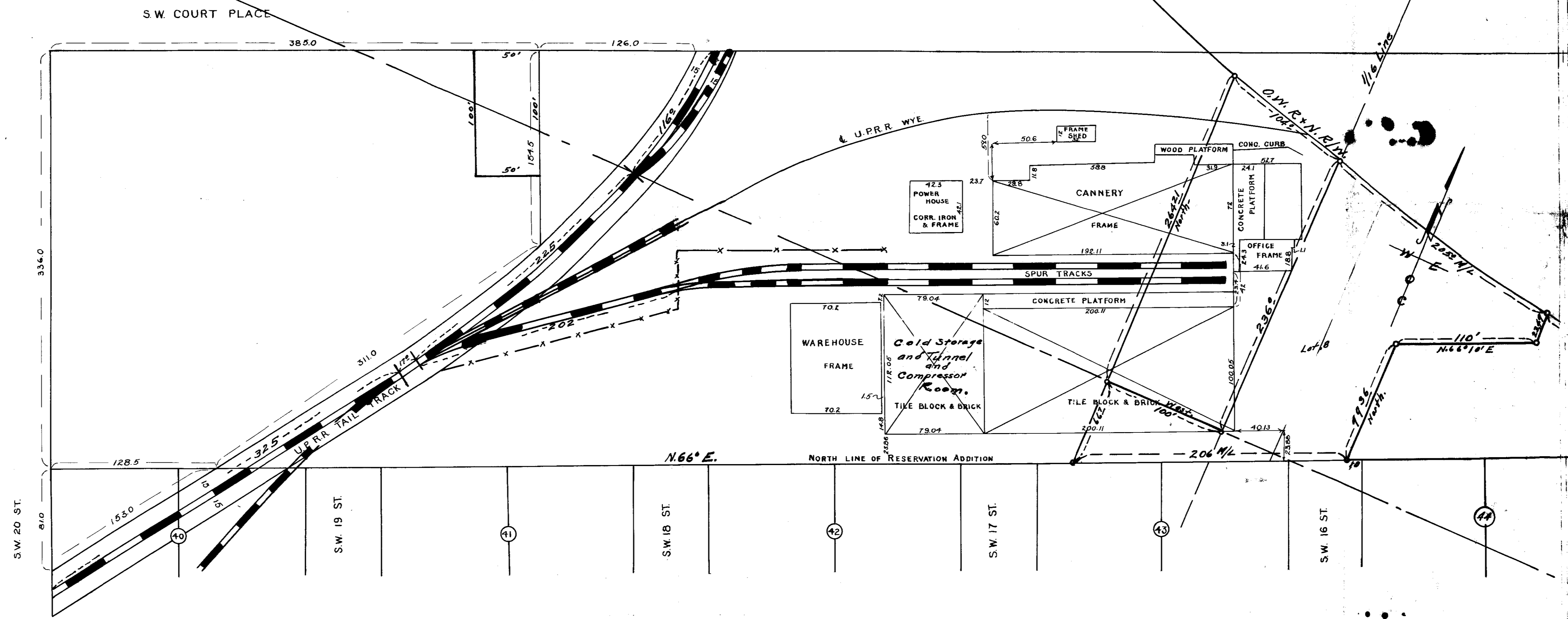


E-W of Sec. 10 T.2N., R.32E.W.M.

Map of  
**Smith Canning and Freezing Co.**  
 of Pendleton, Oregon.  
 Scale 1" = 50'  
 Assembled by - W.E.O. Criger - Criger survey.  
 Resurveyed, checked May-1950 - By W.E.O. Criger



RECEIVED BY  
 Umatilla County Surveyor  
 Date: 2/5/2013  
 Rec'd By: S. Allen  
 No.: 13-023-C  
 T20137 10 83