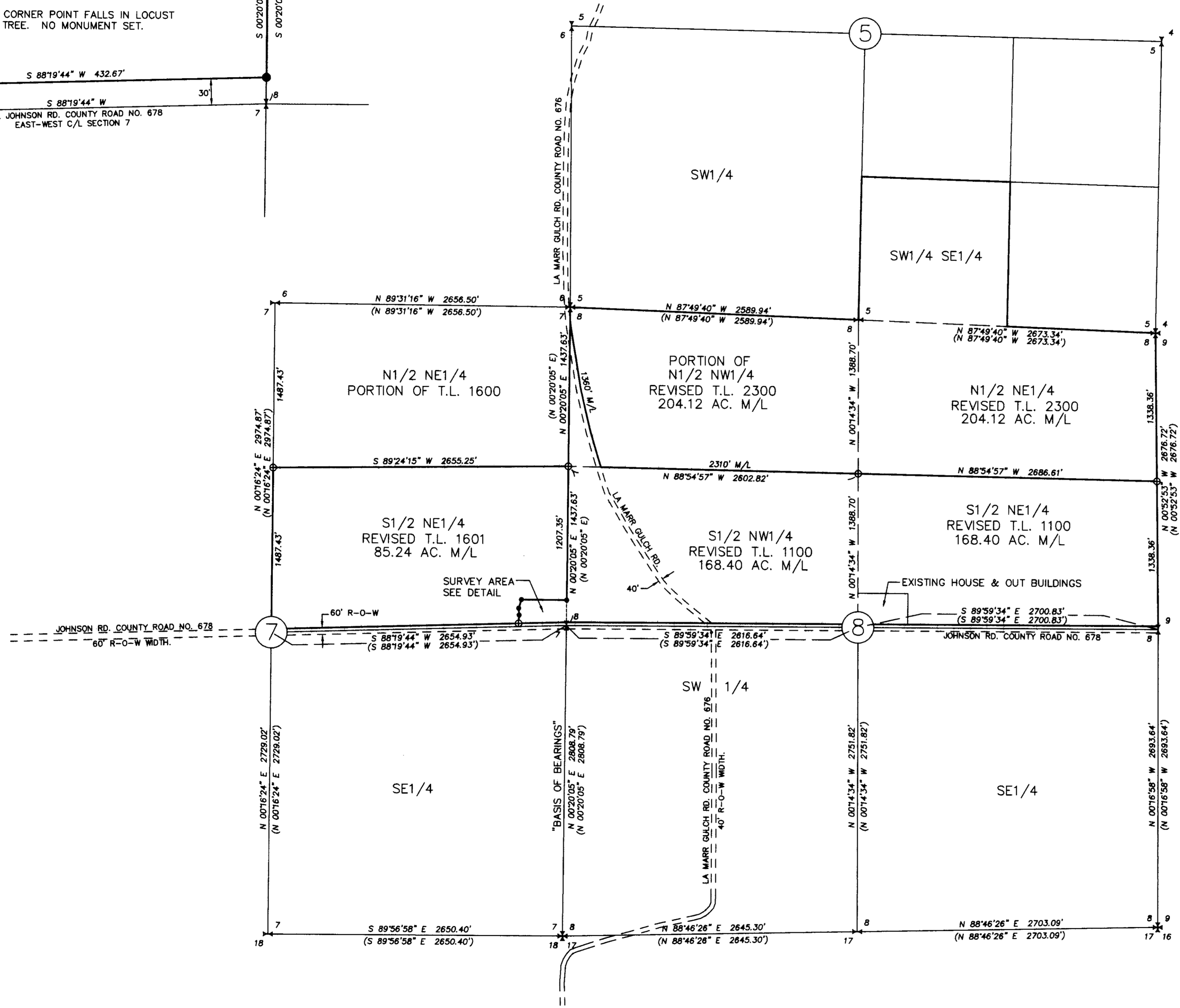
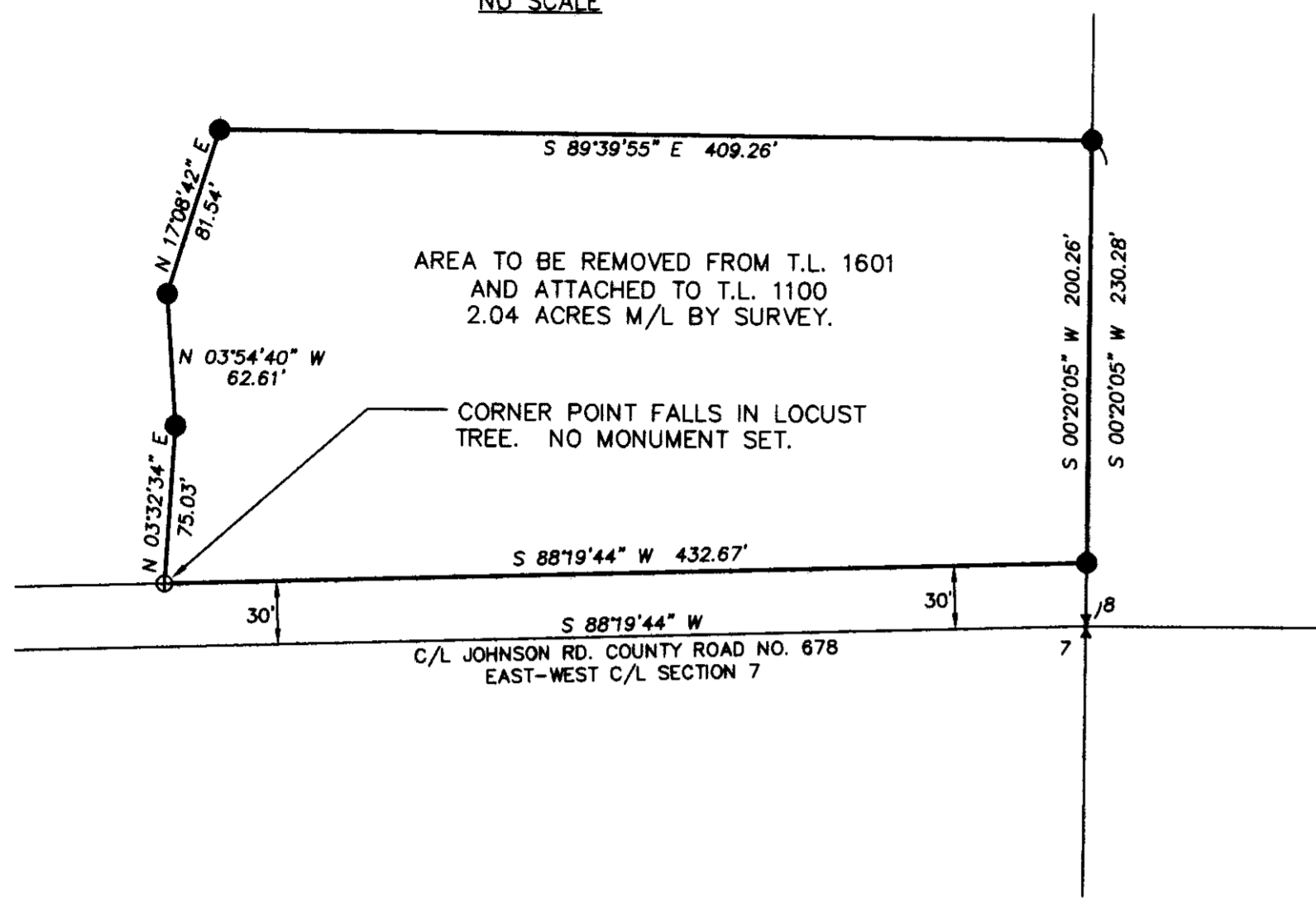


RECORD OF SURVEY



SCALE: 1"=600 FEET
0 300 600 1200

SURVEY AREA DETAIL
NO SCALE



AREA SUMMARY

TAX LOT 1100 UMATILLA COUNTY ASSESSOR MAP NO. 4N 35
 AREA REPORTED ON ASSESSOR MAP = 198.79 ACRES M/L.
 AREA BEFORE ADJUSTMENT = 206.16 ACRES M/L BY SURVEY.
 CONFIGURATION BEFORE ADJUSTMENT, SW 1/4 SE 1/4 SECTION 5 = 39.90 ACRES M/L.
 N 1/2 NE 1/4 SECTION 8 = 83.82 ACRES M/L.
 S 1/2 NE 1/4 SECTION 8 = 82.44 ACRES M/L.
 CONFIGURATION AFTER ADJUSTMENT, S 1/2 NE 1/4 SECTION 8 = 82.44 ACRES M/L.
 S 1/2 NW 1/4 SECTION 8 EAST OF ROAD = 60.64 ACRES M/L.
 S 1/2 NW 1/4 SECTION 8 WEST OF ROAD = 20.61 ACRES M/L.
 N 1/2 NW 1/4 SECTION 8 WEST OF ROAD = 2.67 ACRES M/L.
 S 1/2 NE 1/4 SECTION 7 = 2.04 ACRES M/L.
 AREA AFTER ADJUSTMENT = 168.40 ACRES M/L.
 NET CHANGE -37.76 ACRES.

TAX LOT 2300 UMATILLA COUNTY ASSESSOR MAP NO. 4N 35
 AREA REPORTED ON ASSESSOR MAP = 122.60 ACRES M/L.
 AREA BEFORE ADJUSTMENT = 141.04 ACRES M/L BY SURVEY.
 CONFIGURATION BEFORE ADJUSTMENT, N 1/2 NW 1/4 SECTION 8 EAST OF ROAD = 80.40 ACRES M/L.
 S 1/2 NW 1/4 SECTION 8 EAST OF ROAD = 60.64 ACRES M/L.
 CONFIGURATION AFTER ADJUSTMENT, N 1/2 NW 1/4 SECTION 8 EAST OF ROAD = 80.40 ACRES M/L.
 N 1/2 NE 1/4 SECTION 8 = 83.82 ACRES M/L.
 SW 1/4 SE 1/4 SECTION 5 = 39.90 ACRES M/L.
 AREA AFTER ADJUSTMENT = 204.12 ACRES M/L.
 NET CHANGE +63.08 ACRES.

TAX LOT 1601 UMATILLA COUNTY ASSESSOR MAP NO. 4N 35
 AREA REPORTED ON ASSESSOR MAP = 78.79 ACRES M/L.
 AREA BEFORE ADJUSTMENT = 87.28 ACRES M/L BY SURVEY.
 AREA AFTER ADJUSTMENT = 85.24 ACRES M/L.
 NET CHANGE -2.04 ACRES.

TAX LOT 2200 UMATILLA COUNTY ASSESSOR MAP NO. 4N 35
 AREA REPORTED ON ASSESSOR MAP = 34.40 ACRES M/L.
 AREA BEFORE ADJUSTMENT = 23.28 ACRES M/L BY SURVEY.
 AREA AFTER ADJUSTMENT = 0.00 ACRES.
 TAX LOT TOTALLY ABSORBED INTO TAX LOT 2300.

LEGEND

- SET 5/8"X30" IRON REBAR WITH 1 1/4" PURPLE PLASTIC CAP MARKED "WELLS SURVEYING 54657 PLS."
- ⊕ CALCULATED POINT ONLY. NOTHING FOUND OR SET.
- I RECOVERED AND HELD QUARTER OR SECTION CORNER BRASS CAP FROM SURVEY NO. 02-12-C.
- I * CALCULATED POSITION FOR QUARTER OR SECTION CORNER FROM SURVEY NO. 02-12-C.
- (XOX) RECORD DIMENSION FROM SURVEY NO. 02-12-C.

NARRATIVE

THIS BOUNDARY ADJUSTMENT SURVEY WAS PREPARED AT THE REQUEST OF JESSE & GRANELLA THOMPSON TO ADJUST THE BOUNDARY LINES BETWEEN TAX LOTS 1100, 1601, 2200, AND 2300, ASSESSOR MAP NO. 4N35, AS SHOWN. THE PURPOSE OF THIS ADJUSTMENT IS TO PLACE AN ACCESSORY FARM DWELLING IN AN AREA WHERE A DWELLING WAS ONCE LOCATED. THE ACCESSORY DWELLING MUST BE PLACED ON THE SAME TAX LOT AS THE PRIMARY DWELLING IN THIS HIGH VALUE FARMLAND ZONE PER UMATILLA COUNTY REQUIREMENTS. THE PRIMARY DWELLING BEING LOCATED ON TAX LOT 1100. RECORD DIMENSIONS SHOWN ARE IDENTICAL WITH THOSE REPORTED ON SURVEY NO. 02-12-C.

THE SURVEY WAS PERFORMED WITH A TRIMBLE R8 GPS RECEIVER OPERATED IN REAL TIME KINEMATIC MODE THROUGH THE OREGON REAL TIME GPS NETWORK. MONUMENTS SET WERE VERIFIED BY SEPARATE OBSERVATIONS.

RECEIVED BY
 Umatilla County Surveyor
 Date: 5/31/2012
 Rec'd By: J. Alex
 No.: 12-082-C

REGISTERED PROFESSIONAL LAND SURVEYOR

 OREGON
 NOVEMBER 29, 2010
 JASON M. WELLS
 54657 PLS
 RENEWS 6/30/12

PROJECT:
 BOUNDARY ADJUSTMENT FOR:
JESSE & GRANELLA THOMPSON
 DATE: 05/12 DR. BY: JMW
 CK. BY: WRW NO: 12-1371

1 SW NYE AVENUE, SUITE B
 P.O. BOX 1696
 PENDLETON, OREGON
 PHONE: (541) 276-6362
 LOCATED IN SECTIONS 5, 7, & 8,
 T4N, R35E, W.M., UMATILLA COUNTY, OREGON.

THOMPSONBAROT