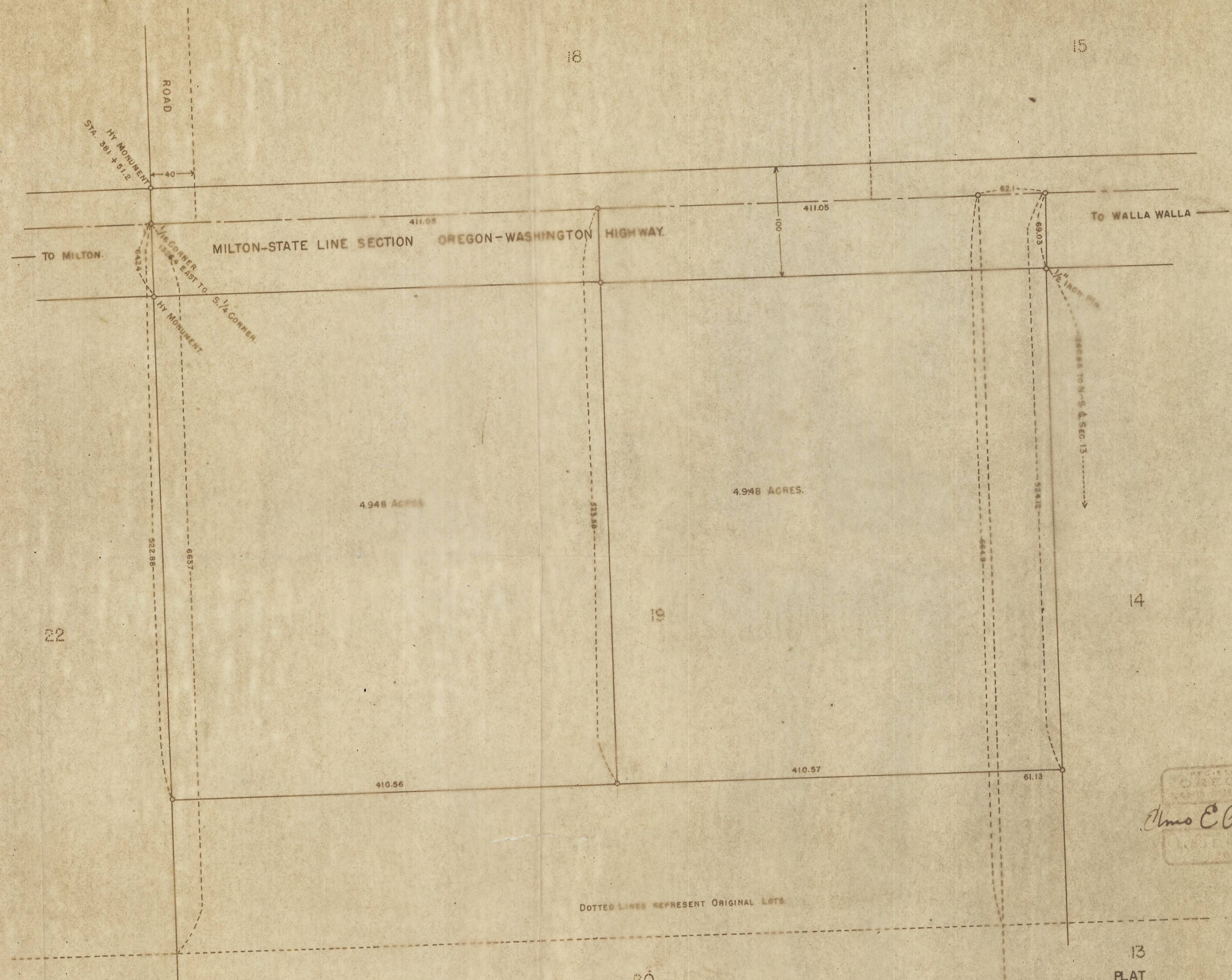


Order 39924



Almo C. Polneitt

DOTTED LINES REPRESENT ORIGINAL LOTS.



13  
 FLAT  
 PORTION OF  
 LOTS 14 & 19  
 GRANDVIEW ADDITION  
 UMATILLA COUNTY, OREGON.  
 SW 1/4 SEC. 13, T. 6 N. R. 36 E. W. M.  
 SCALE 1"=60'

JUNE 1948

835

07-139-C

411.05  
 411.05  
 822.10  
 26.00  
 848.10