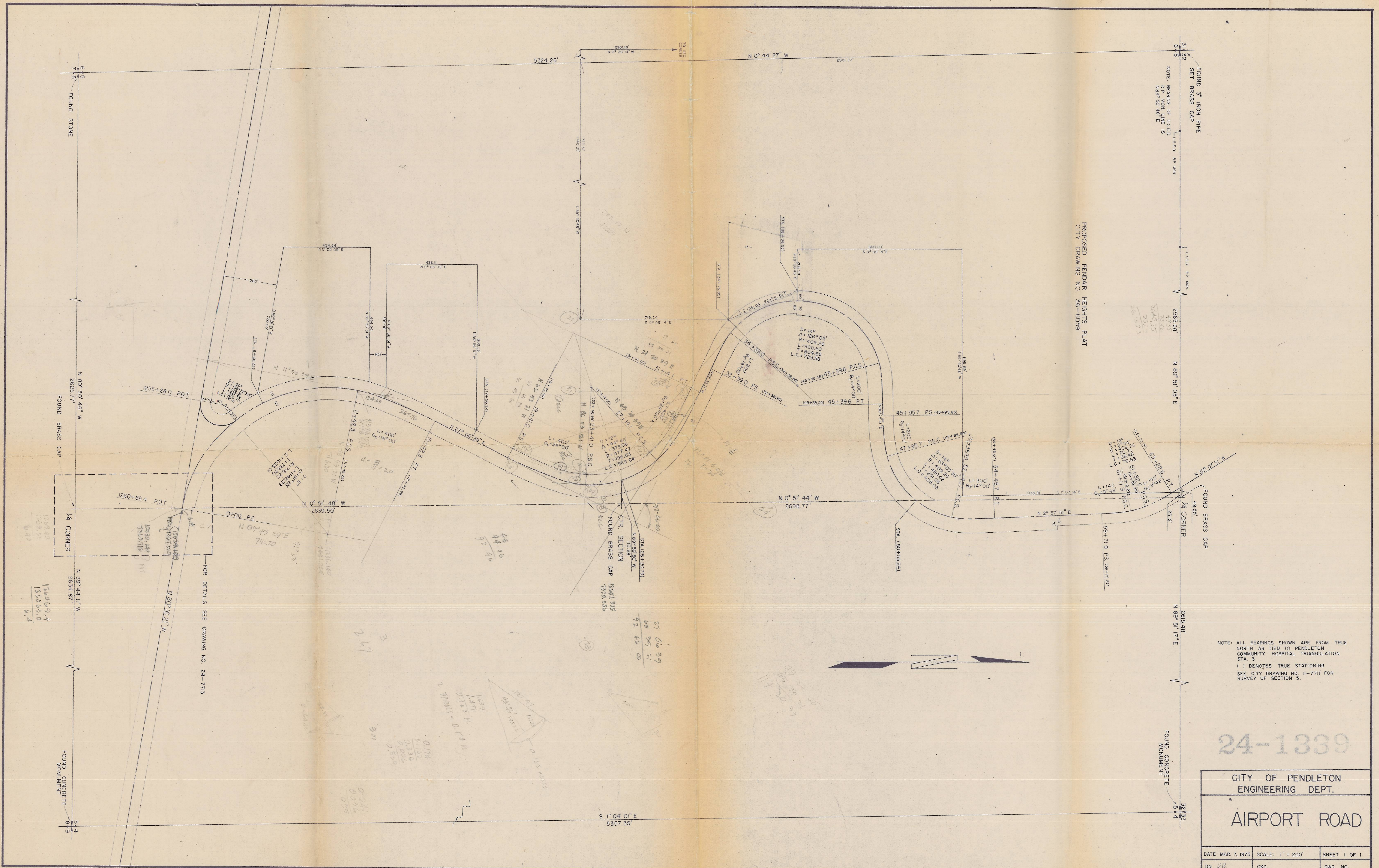


3-26 3.40

36336 2/21/95



PROPOSED PENDLEAR HEIGHTS PLAT  
CITY DRAWING NO. 56-6099

FOUND 3" IRON PIPE  
SET BRASS CAP

FOUND CONCRETE  
MONUMENT

NOTE: ALL BEARINGS SHOWN ARE FROM TRUE  
NORTH AS TIED TO PENDLETON  
COMMUNITY HOSPITAL TRIANGULATION  
STA. 3  
( ) DENOTES TRUE STATIONING  
SEE CITY DRAWING NO. 11-7711 FOR  
SURVEY OF SECTION 5.

24-1339

CITY OF PENDLETON ENGINEERING DEPT.		
AIRPORT ROAD		
DATE: MAR. 7, 1975	SCALE: 1" = 200'	SHEET 1 OF 1
DN. 28	CKD.	DWG. NO.

06-630-C  
20325