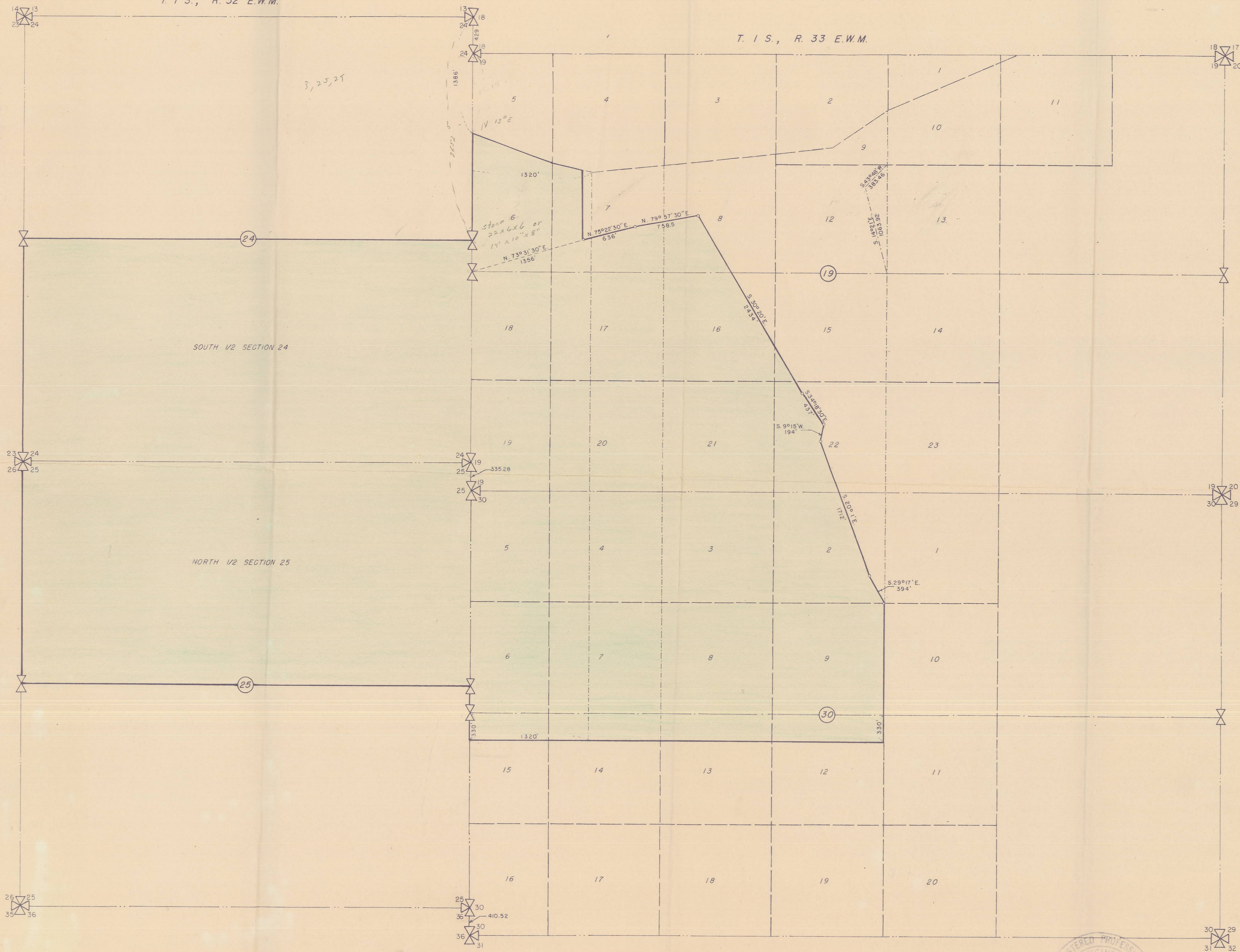


T. 1 S., R. 32 E.W.M.

T. 1 S., R. 33 E.W.M.

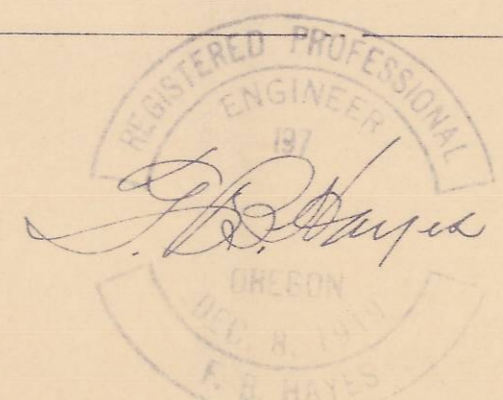
3, 25, 25



**LEGEND**

- Property Line
- Section Line
- Section Center Line
- Lot Line
- Description Line

**NOTE:**  
 This drawing was made from Records furnished by the office of the Recorder of Conveyances, Umatilla County, Oregon.



**HAYES & HARRIS ENGINEERING**

PLOT OF PROPERTY OWNED BY  
**U. G. HORN**

SECTIONS 24 & 25, T. 1 S., R. 32 E.W.M.  
SECTIONS 19 & 30, T. 1 S., R. 33 E.W.M.

SCALE	DATE	DRAWN BY
1" = 600'	8/19/54	m. p. bemis

06-544-C