

By	
Revision	
Date	

Project:
BOUNDARY SURVEY
LOCATED IN THE NW
1/4 OF THE NW 1/4
OF SECTION 02 NORTH,
RANGE 34 EAST, W.M.,
IN UMATILLA COUNTY,
OR

Client
AARON ASHLEY
407 DOGWOOD LOOP
PENDLETON, OR 97801
1-541-278-3718

Project Mgr. PWPT

Drawn DWV

Checked PWPT

Scale 1"=200'

Date 02/23/2006

Sheet Contents:
BOUNDARY SURVEY.

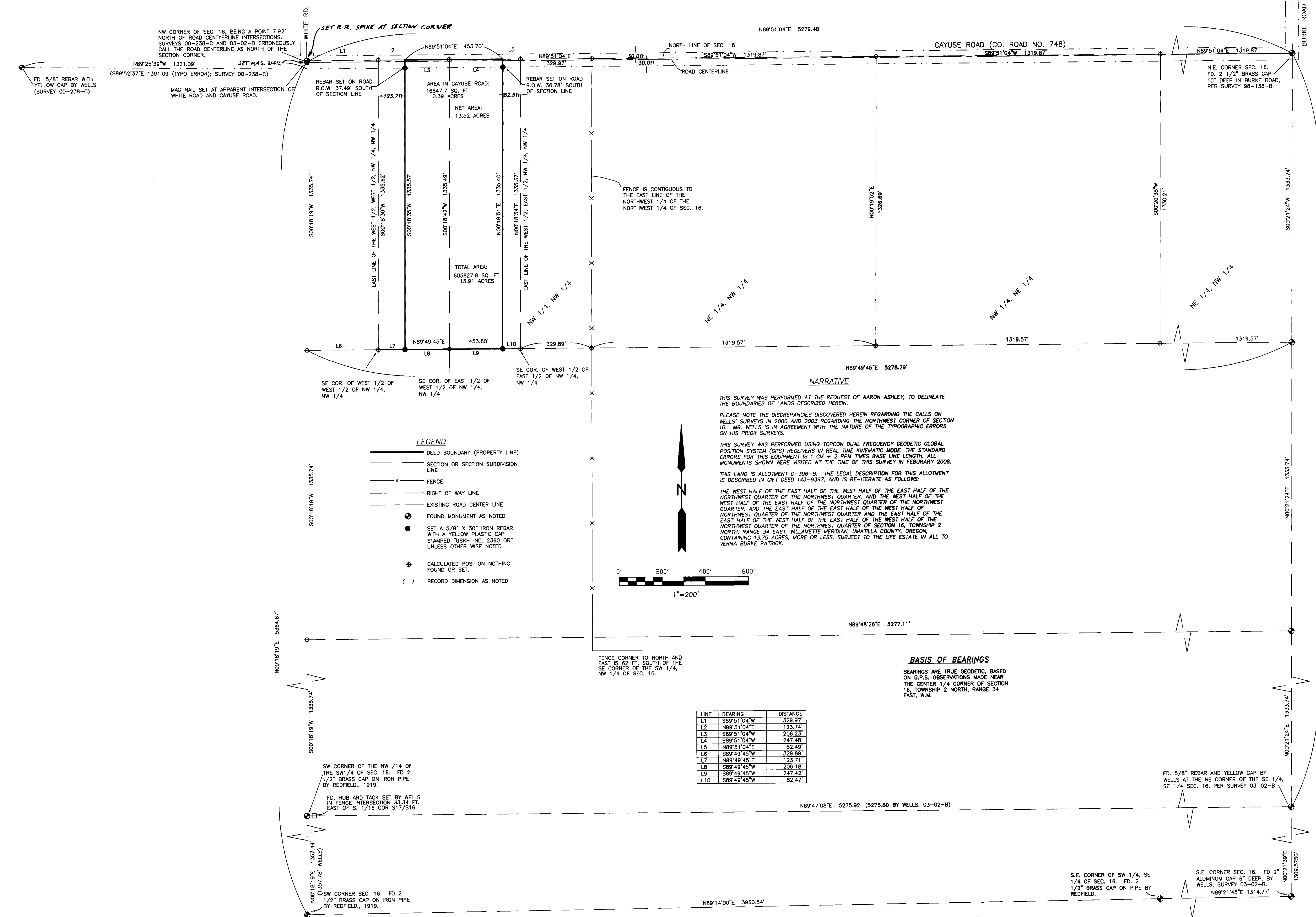
Reviewed by

Paul W.P. Tomkins

Date 5-06

Project No. 06-41-C

Sheet No.:



50021'24"W 4001.22'

N0021'24"E 1333.74'

S0021'24"W 1333.74'

N0018'19"W 1335.74'

S0018'19"W 1335.74'

N0018'19"E 5384.87'

N0018'19"E 1357.44'

S0018'19"W 1357.78'

N0018'19"E 1357.78'

S0018'19"W 1357.78'

N0018'19"E 1357.78'

S0018'19"W 1357.78'

N0018'19"E 1357.78'

S0018'19"W 1357.78'

N0018'19"E 1357.78'

S0018'19"W 1357.78'

N0018'19"E 1357.78'

S0018'19"W 1357.78'

N0018'19"E 1357.78'

S0018'19"W 1357.78'

N0018'19"E 1357.78'

S0018'19"W 1357.78'

N0018'19"E 1357.78'

S0018'19"W 1357.78'

N0018'19"E 1357.78'

S0018'19"W 1357.78'

N0018'19"E 1357.78'

S0018'19"W 1357.78'

N0018'19"E 1357.78'

S0018'19"W 1357.78'

N0018'19"E 1357.78'

S0018'19"W 1357.78'

N0018'19"E 1357.78'

S0018'19"W 1357.78'

N0018'19"E 1357.78'

S0018'19"W 1357.78'

N0018'19"E 1357.78'

S0018'19"W 1357.78'

N0018'19"E 1357.78'

S0018'19"W 1357.78'

N0018'19"E 1357.78'

S0018'19"W 1357.78'

N0018'19"E 1357.78'

S0018'19"W 1357.78'

N0018'19"E 1357.78'

S0018'19"W 1357.78'