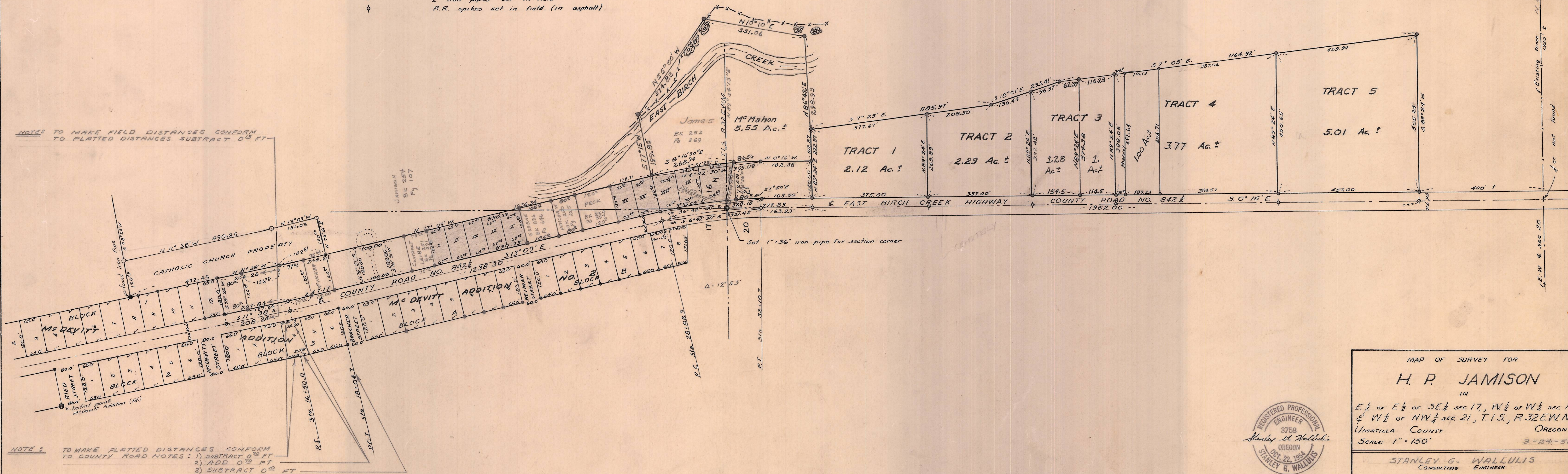


- LEGEND -

- 1/2" Iron pins found in field.
- 1/2" Iron pipes set in field
- ◇ R.R. spikes set in field. (in asphalt)

NOTES TO MAKE FIELD DISTANCES CONFORM TO PLATTED DISTANCES SUBTRACT 0.15 FT



NOTE: TO MAKE PLATTED DISTANCES CONFORM TO COUNTY ROAD NOTES: 1) SUBTRACT 0.15 FT 2) ADD 0.15 FT 3) SUBTRACT 0.15 FT

EAST BIRCH CREEK

MAP OF SURVEY FOR
H. P. JAMISON
 IN
 E 1/2 or E 1/2 of SE 1/4 sec 17, W 1/2 or W 1/2 sec 16
 & W 1/2 of NW 1/4 sec 21, T. 15, R. 32E, W. M
 UMATILLA COUNTY
 OREGON
 Scale: 1" = 150'
 3-24-58

REGISTERED PROFESSIONAL ENGINEER
 3758
 Stanley G. Wallulis
 OREGON
 OCT. 22, 1954
 STANLEY G. WALLULIS

STANLEY G. WALLULIS
 CONSULTING ENGINEER
 PENDLETON OREGON

