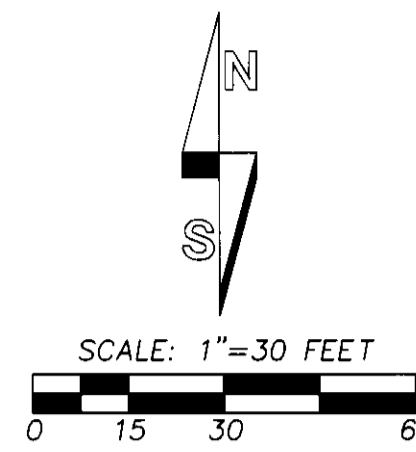
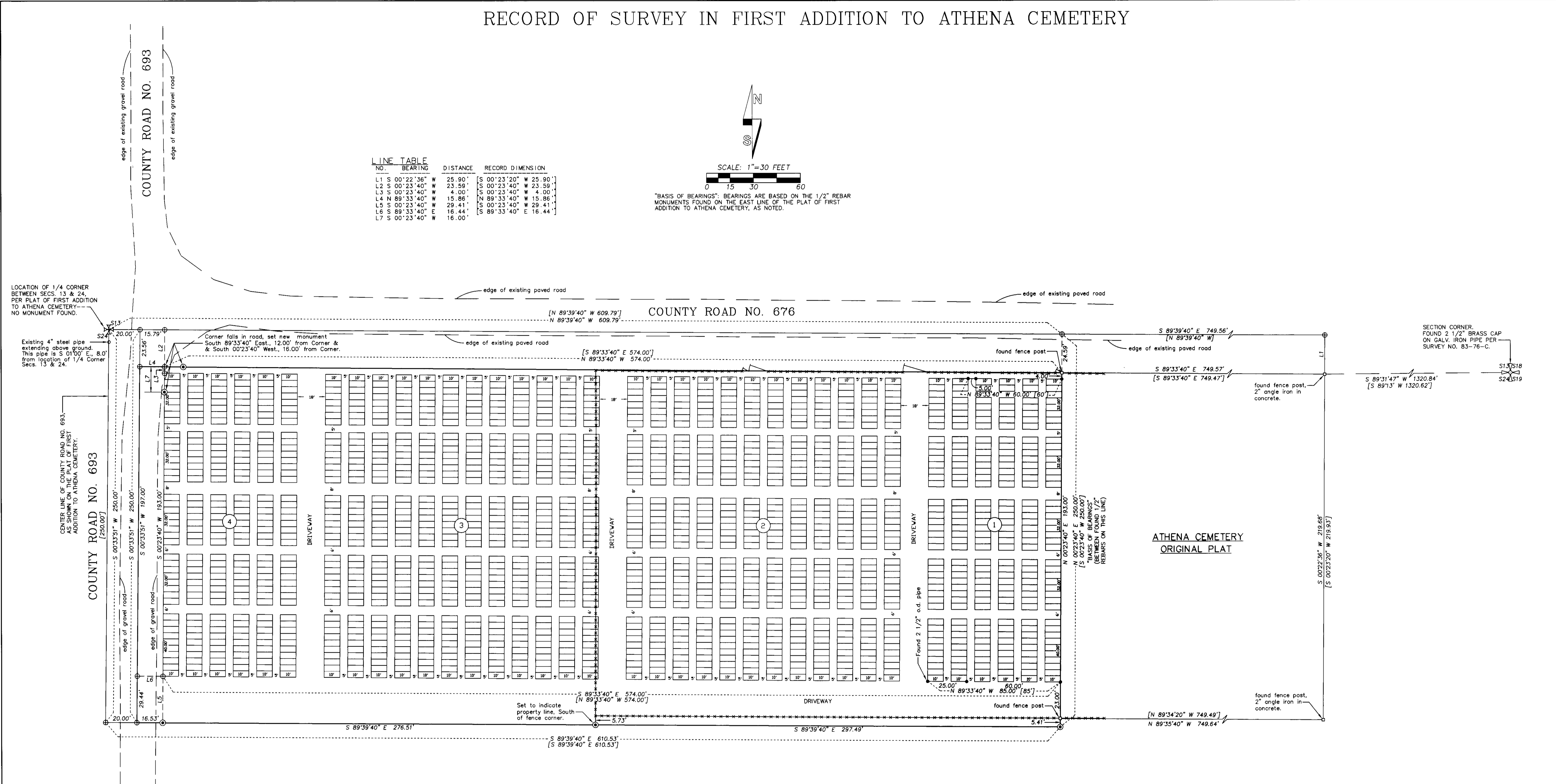


RECORD OF SURVEY IN FIRST ADDITION TO ATHENA CEMETERY

NO.	BEARING	DISTANCE	RECORD DIMENSION
L1	S 00°22'36" W	25.90'	[S 00°23'20" W 25.90']
L2	S 00°23'40" W	23.59'	[S 00°23'40" W 23.59']
L3	S 00°23'40" W	4.00'	[S 00°23'40" W 4.00']
L4	N 89°33'40" W	15.86'	[N 89°33'40" W 15.86']
L5	S 00°23'40" W	29.41'	[S 00°23'40" W 29.41']
L6	S 89°33'40" E	16.44'	[S 89°33'40" E 16.44']
L7	S 00°23'40" W	16.00'	[S 00°23'40" W 16.00']



"BASIS OF BEARINGS": BEARINGS ARE BASED ON THE 1/2" REBAR MONUMENTS FOUND ON THE EAST LINE OF THE PLAT OF FIRST ADDITION TO ATHENA CEMETERY, AS NOTED.



LOCATION OF 1/4 CORNER BETWEEN SECS. 13 & 24 PER PLAT OF FIRST ADDITION TO ATHENA CEMETERY-- NO MONUMENT FOUND.

Existing 4" steel pipe extending above ground. This pipe is S 01°00' E, 8.0' from location of 1/4 Corner Secs. 13 & 24.

Corner falls in road, set new monument South 89°33'40" East, 12.00' from Corner & South 00°23'40" West, 16.00' from Corner.

SECTION CORNER. FOUND 2 1/2" BRASS CAP ON GALV. IRON PIPE PER SURVEY NO. 83-76-C.

CENTER LINE OF COUNTY ROAD NO. 693, AS SHOWN ON THE PLAT OF FIRST ADDITION TO ATHENA CEMETERY.

ATHENA CEMETERY ORIGINAL PLAT

LEGEND

- FOUND PUBLIC LAND SURVEY CORNER AS NOTED.
- LOCATION OF PUBLIC LAND SURVEY CORNER PER PLAT OF FIRST ADDITION TO ATHENA CEMETERY.
- SET 5/8" BY 30" IRON REBAR UNLESS OTHERWISE NOTED.
- FOUND 1/2" REBAR SET ON PLAT OF FIRST ADDITION TO ATHENA CEMETERY, UNLESS OTHERWISE NOTED.
- CALCULATED POINT ONLY, NOT SET OR FOUND.
- INDICATES FOUND EXISTING FENCE POST REFERRED TO ON PLAT OF ATHENA CEMETERY OR PLAT OF FIRST ADDITION TO ATHENA CEMETERY.
- INDICATES EXISTING FENCE LINE.
- [XOX] - RECORD DIMENSION, PLAT OF ATHENA CEMETERY OR PLAT OF FIRST ADDITION TO ATHENA CEMETERY.

NARRATIVE:

THIS SURVEY WAS MADE FOR THE CITY OF ATHENA FOR THE PURPOSE OF DEFINING THE BOUNDARY OF THE FIRST ADDITION TO ATHENA CEMETERY. THE UNDEVELOPED PORTION OF THE FIRST ADDITION TO ATHENA CEMETERY IS TO BE LEVELED AND GRADED FOR FUTURE USE.

CONTROL FOR THE SURVEY IS BASED ON TIES TO MONUMENTS FOUND FOR THE PLAT OF ATHENA CEMETERY AND THE PLAT OF THE FIRST ADDITION TO ATHENA CEMETERY. RECOVERED PLAT MONUMENTS AND "FENCE CORNERS" FIT THE ORIGINAL PLAT RECORD VERY WELL. THE ONLY EXCEPTION IS THE "TIE" FROM THE NORTHEAST CORNER OF SECTION 24 TO THE NORTHEAST CORNER OF THE ORIGINAL ATHENA CEMETERY PLAT. WE MEASURE SOUTH 89°31'47" WEST AND THE ORIGINAL PLAT RECORD IS SOUTH 89°13' WEST. THE DISCREPANCY MAY BE A TRANSPOSITION.

THE SURVEY WAS MADE BY A 2 PERSON CREW USING A LEITZ SET 3B ONE SECOND TOTAL STATION BY A COMBINATION OF CLOSED TRAVERSES AND RADIAL TIES. NEW MONUMENTS WERE ESTABLISHED BY RADIAL METHODS AND VERIFIED BY SEPARATE OBSERVATIONS FROM DIFFERENT BACK SIGHTS.

NOTES:

1. THE RIGHT-OF-WAY WIDTH OF PINKERTON ROAD, (COUNTY ROAD NO. 693) IS SHOWN AS INDICATED ON THE PLAT OF THE FIRST ADDITION TO ATHENA CEMETERY.
2. IN THE FIRST ADDITION TO ATHENA CEMETERY, ONLY BLOCK 1 WAS MONUMENTED.

RECEIVED BY
 Umatilla County Surveyor
 Date: 4-02
 Rec'd By: WRW
 No.: 02-279-C

REGISTERED PROFESSIONAL LAND SURVEYOR
 Will R. Wells
 OREGON
 JULY 22, 1977
 WILLIAM R. WELLS
 1106
 RENEWS 6/30/04

WILLIAM R. WELLS, PLS
 2602 N.E. RIVERSIDE PLACE
 P.O. BOX 1696
 PENDLETON, OREGON
 PHONE: (541) 276-6362

DATE: 09/02 DR. BY: DMT
 CK. BY: WRW NO: 02-816

PROJECT:
 RECORD OF SURVEY IN FIRST ADDITION TO ATHENA CEMETERY
 PREPARED FOR:
 CITY OF ATHENA
 LOCATED IN THE NE 1/4 OF SECTION 24, T4N., R34E., W.M., UMATILLA COUNTY, OREGON.