

# RECORD OF SURVEY

SECTIONS 3 THROUGH 11 AND SECTIONS 14 THROUGH 18  
TOWNSHIP 4 NORTH, RANGE 35 EAST, W.M., UMATILLA COUNTY

## RECORD SURVEY REFERENCES INDICATED ON MAP

- R1 - RECORD FROM SURVEY BY WILLIAM H. ODELL UNDER CONTRACT NO. 114, DATED JULY 2, 1886.
- R2 - RECORD FROM GLO SURVEY BY ODELL AND LEWIS UNDER CONTRACT NO. 110, DATED FEBRUARY 7, 1865.
- R4 - RECORD PER FIELD NOTES BY J.C. ARNOLD IN SUBDIVISION OF SECTION 16, OCT. 1 THROUGH 10, 1889. THESE NOTES, OBTAINED FROM COUNTY SURVEY OFFICE DIFFER FROM ARNOLD'S SUBDIVISION OF SECTION 16 AS REPORTED IN R.P.S. BOOK 1, PAGES 221-225.
- R5 - RECORD R.P.S. BOOK 1, PAGES 264-265, ARNOLD, 1893, SURVEY NO. 58.
- R6 - RECORD R.P.S. BOOK 1, PAGE 347, 1897, KIMBRELL, SURVEY NO. 89.
- R7 - RECORD FROM UMATILLA COUNTY SURVEY NO. M-120-B.
- R9 - RECORD FROM UMATILLA COUNTY SURVEY NO. 83-76-C, BY KRUMBEIN ENGINEERING LTD.
- R10 - RECORD FROM UMATILLA COUNTY PARTITION PLAT NO. 1995-29.
- R11 - RECORD FROM UMATILLA COUNTY SURVEY NO. 97-141-C, BY WILLIAM R. WELLS, PLS.
- R12 - RECORD FROM TILLMAN ADDITION RECORDED AT BOOK 13, PAGE 122, UMATILLA COUNTY RECORD OF TOWN PLATS.
- R15 - RECORD FROM R.P.S. BOOK 2, PAGE 241, BY J. KIMBRELL, 1913.
- R16 - RECORD FROM SURVEY BY STAEBLER, SURVEY NO. 88-09-A.
- R17 - RECORD FROM R.P.S. BOOK 1, PAGE 496, BY J. KIMBRELL, 1903, SURVEY NO. 160.
- R18 - RECORD FROM R.P.S. BOOK 1, PAGE 133, BY P. ZAHNER, 1885, SURVEY NO. 16.

NOTE:  
STATE PLANE COORDINATE VALUES FOR CALCULATED POSITIONS OF STANDARD CORNERS NOT REMONUMENTED ARE INTERNATIONAL FOOT UNITS, OREGON STATE PLANE, NORTH ZONE, NAD 83(91).

## LEGEND

- - RECOVERED OR REESTABLISHED CORNER AND MONUMENTED WITH A 2 1/2" BRASS CAP ON 1" X 30" GALVANIZED IRON PIPE, UNLESS OTHERWISE NOTED. CORNER RECORD FILED WITH THIS SURVEY.
- - RECOVERED OR REESTABLISHED CORNER AND MONUMENTED WITH A 2 1/2" ALUMINUM CAP ON 2 1/2" X 30" ALUMINUM PIPE.
- ⊙ - FOUND 2 1/2" BRASS CAP MONUMENT OF RECORD, MAINTAINED CORNER. CORNER RECORD FILED WITH THIS SURVEY.
- ⊕ - FOUND 2 1/2" BRASS CAP MONUMENT FOR PUBLIC LAND SURVEY CORNER MAINTAINED OR REESTABLISHED ON SURVEY NO. 97-141-C, UNLESS OTHERWISE NOTED.
- - OTHER MONUMENT FOUND, AS NOTED.
- ⊕ - CALCULATED POSITION ONLY, NOT SET OR FOUND.
- R.P.S. - INDICATES SURVEY OF RECORD FOUND IN "RECORD OF PRIVATE SURVEYS" BOOK 1 OR 2.
- S.P.C. - INDICATES STATE PLANE COORDINATE VALUE, OREGON NORTH, INTERNATIONAL FEET, NAD83(91).
- (XOX)\*\* - INDICATES RECORD DIMENSIONS USED FOR PROPORTIONING IN REESTABLISHING CORNERS ON STANDARD PARALLEL.

## NARRATIVE OF SURVEY

THE PURPOSE OF THIS SURVEY WAS TO RECOVER, REESTABLISH OR MAINTAIN CERTAIN SECTION AND ONE-QUARTER SECTION CORNERS IN SECTIONS 3 THROUGH 11 AND SECTIONS 14 THROUGH 18 TOWNSHIP 4 NORTH, RANGE 35 EAST, W.M., THE SURVEY WORK WAS AUTHORIZED BY THE COUNTY SURVEYOR AND BOARD OF COUNTY COMMISSIONERS AND FUNDED BY THE PUBLIC LAND CORNER REMONUMENTATION FUND.

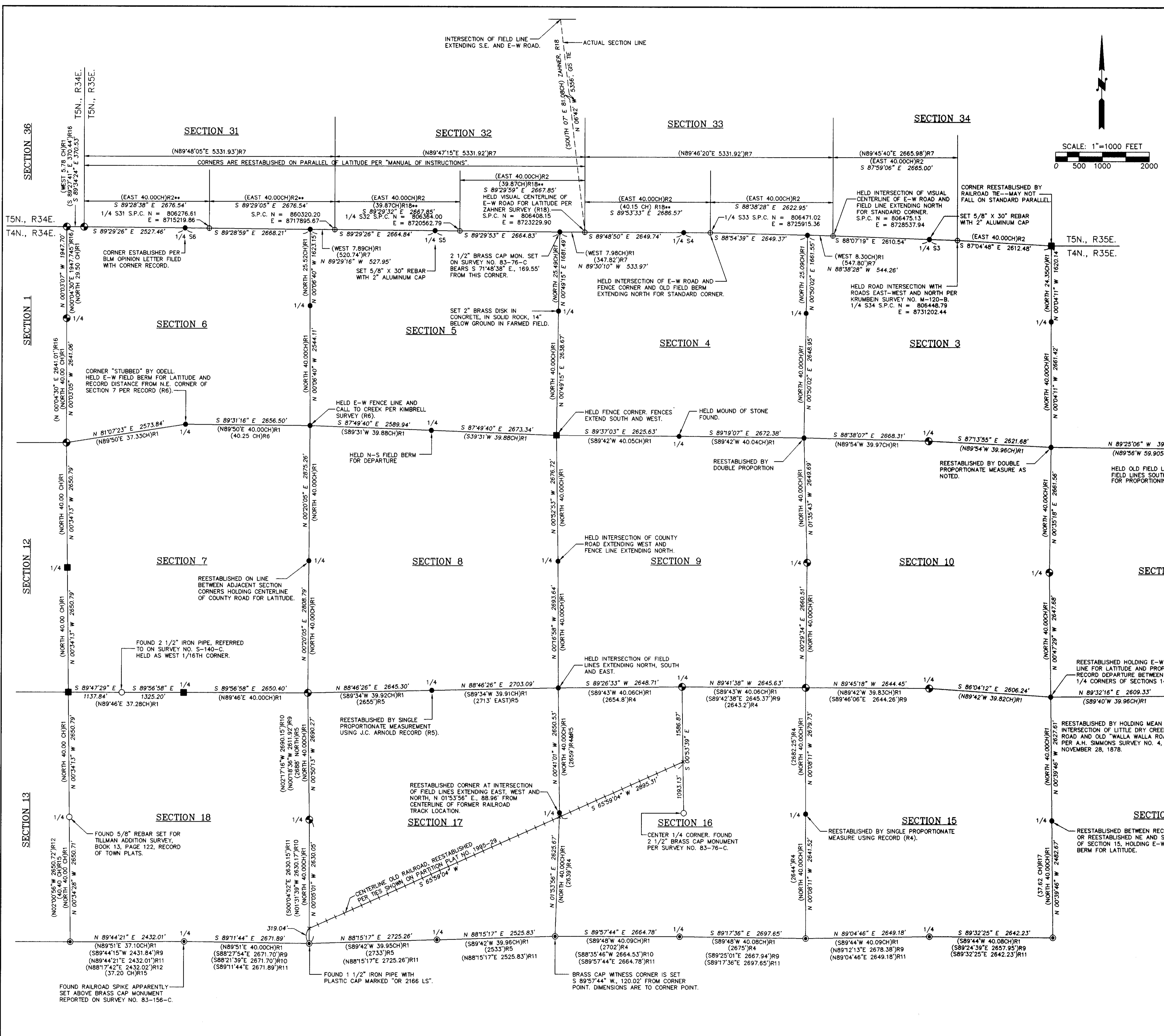
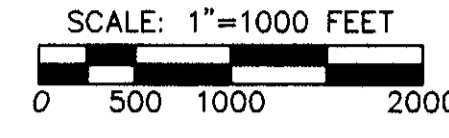
THE PROJECT AREA HAS BEEN FARMED EXTENSIVELY FOR OVER 120 YEARS AND LOCATION EVIDENCE OF MANY CORNERS HAS BEEN LOST. ORIGINAL MONUMENTS WERE TYPICALLY EARTH MOUNDS WITH CHARRED STAKES AND PITS. CERTAIN CORNERS HAVE BEEN RECOVERED AND REMONUMENTED BY COUNTY SURVEYORS WORKING IN THE AREA SINCE THE ORIGINAL SURVEYS. REVIEW OF NOTES OF THE EARLY COUNTY SURVEYORS INDICATES UNCERTAINTY OF WHERE ORIGINAL CORNERS SHOULD STAND EVEN 80 OR 100 YEARS AGO. WILLIAM ODELL, THE ORIGINAL SURVEYOR FOR THIS PART OF THE TOWNSHIP IS KNOWN TO HAVE "STUBBED" HIS SURVEY LINES RATHER THAN RUNNING THE LINES BY OFFICIAL APPROVED METHODS. "STUBBING" OF SURVEY LINES RESULTS IN IRREGULAR SECTION LINES WHICH DO NOT CORRESPOND TO THE RECORD CONFIGURATION SHOWN ON THE APPROVED ORIGINAL PLATS, SUCH AS THE SITUATION OF THE NORTH LINE OF SECTION 7 OF THIS SURVEY.

THE NORTH 1/4 CORNERS OF SECTIONS 3 THROUGH 6 WERE NOT ORIGINALLY ESTABLISHED. THESE CORNERS WERE POSITIONED BASED ON THE OFFICIAL PLAT OF THE ORIGINAL SURVEY AND ARE POSITIONED ON THE FIRST STANDARD PARALLEL NORTH BY EXTENDING A LINE FROM THE SOUTH 1/4 OF THE SECTION, THROUGH THE CALCULATED DEPARTURE FOR THE NORTH 1/4 CORNER LOCATION BASED ON ADJACENT CONTROLLING CORNERS AND INTERSECTING WITH THE STANDARD PARALLEL. A BLM OPINION WAS OBTAINED TO DETERMINE THE PROPER LOCATION FOR THE NORTH 1/4 CORNER OF SECTION 6 ONLY BECAUSE THE ORIGINAL PLAT LOTTING IS INCORRECT. A COPY OF THE BLM OPINION IS ATTACHED TO THE LAND CORNER RECORD FOR THE CORNER.

CONTROLLING CORNERS WERE TIED WITH A LEICA SYSTEM 399 GEODETIC G.P.S. RECEIVERS USING RAPID STATIC AND REAL TIME KINEMATIC METHODS. CORNERS REQUIRING ESTABLISHMENT OR RE-ESTABLISHMENT WERE SET USING REAL TIME KINEMATIC METHODS AND VERIFIED BY SEPARATE OBSERVATIONS. ACCESSORIES TO CORNER MONUMENTS WERE MEASURED WITH A STEEL TAPE AND COMPASS.

## LAND CORNER RECORD FORMS

THE LAND CORNER RECORD FORMS, FILED SEPARATELY, CONTAIN EXPLANATIONS, HISTORIES, AND METHODS OF RE-ESTABLISHMENT, REMONUMENTATION AND MAINTENANCE FOR CORNERS VISITED ON THIS SURVEY. THE LAND CORNER RECORDS SHOULD BE CONSULTED FOR SPECIFIC INFORMATION ON EACH CORNER.



REGISTERED PROFESSIONAL LAND SURVEYOR  
*William R. Wells*  
OREGON  
JULY 22, 1977  
WILLIAM R. WELLS  
1106  
RENEWS 6/30/02

WILLIAM R. WELLS, PLS  
357 N.E. HIGHWAY 11  
P.O. BOX 1696  
PENDLETON, OREGON  
PHONE: (541) 276-6362

DATE: 4/01 DR. BY: DMT  
CK. BY: WRW NO: 00-716

PROJECT:  
SURVEY FOR:  
UMATILLA COUNTY

LOCATED IN SECTIONS 3 THROUGH 11 AND SECTIONS 14 THROUGH 18, TOWNSHIP 4 NORTH, RANGE 35 EAST, W.M., UMATILLA COUNTY, OREGON.

2-02  
02-12-C  
JAWPLAT2