

**NARRATIVE:**

THE PURPOSE OF THIS SURVEY IS TO MONUMENT THE GENERAL LAND OFFICE CORNERS IN THE SOUTH EAST QUARTER OF TOWNSHIP 4 NORTH, RANGE 29 EAST, WILLAMETTE MERIDIAN, UMATILLA COUNTY, OREGON.

THE SOUTH LINE OF T4N, R29E, WAS SURVEYED IN 1859 BY GATES UNDER CONTRACT #84. THE EAST LINE OF T4N, R29E, WAS SURVEYED IN 1860 BY CAMPBELL UNDER CONTRACT #95. T4N, R29E, WAS SURVEYED IN 1861 BY DAVENPORT UNDER CONTRACT #101. THE MONUMENTS SET AT ALL OF THE CORNERS IN ALL THREE CONTRACTS WERE WOOD POSTS IN MOUNDS OF EARTH. DAVENPORT ALSO SET A CHARRED STAKE AT HIS CORNERS. AT EVERY MONUMENT LOCATION EITHER THE GROUND IS FARMED OR THERE IS A ROAD, CONSEQUENTLY NO ORIGINAL MONUMENTS WERE FOUND.

TO ESTABLISH THE TOWNSHIP CORNER I PROPORTIONED THE EAST LOCATION FROM MONUMENTS FOUND TO THE EAST AND WEST. FOR THE NORTH LOCATION I USED THE CENTERLINE OF THE EXISTING OLD STAGE ROAD. SAID ROAD WAS SURVEYED AS COUNTY ROAD #293 IN 1887 BY ARNOLD AND AS COUNTY ROAD #175 IN 1911 BY KIMBRELL. BOTH TIMES CENTER LINE WAS SURVEYED COINCIDENTAL WITH THE TOWNSHIP LINE. IN ARNOLD'S SURVEY HE STARTED AT THE 6 1/4 SEC. 1, T3N, R29E, AND RAN NORTH 5336 FEET TO THE RANGE LINE, WHICH WAS 56 FEET LONG. THAT PRETTY MUCH MATCHES MY 97 FEET EXTRA IN THE TWO MILES SOUTH OF THE TOWNSHIP CORNER.

FOR THE SOUTH LINE OF THE TOWNSHIP I USED THE CENTER OF THE ROAD AT A HIGH POINT ABOUT 500 FEET EAST OF THE SW CORNER SECTION 36 AND WENT IN A STRAIGHT LINE BOTH EAST AND WEST TO THE MONUMENTS AT THE SE AND SW CORNER OF THIS PROJECT WHICH ARE BOTH ALSO AT THE CENTER OF THE ROAD. I PROPORTIONED THE DISTANCES AND THE PROPORTION FITS WITH THE CENTER OF COOPER ROAD, WHICH WAS ALSO SURVEYED ALONG THE NORTH-SOUTH CENTER LINE OF SECTION 34 (SURVEYED IN 1921 BY FERRY AS COUNTY ROAD #828).

FOR THE EAST LINE OF THIS TOWNSHIP I SINGLE PROPORTIONED FROM THE SE CORNER OF THE TOWNSHIP NORTH TO A 1 1/4" IRON PIPE WHICH I FOUND AT THE NE CORNER OF SECTION 12. I DID NOT USE THE IRON PIPE I FOUND AT THE E 1/4 OF SECTION 12 BECAUSE IT IS TOO FAR SOUTH AND WEST. ALSO, I DID NOT USE THE FENCE CORNER AT THE NE CORNER OF SECTION 24, BECAUSE IT IS TOO FAR NORTH AND EAST. THE FENCE LINE AT THE ABOVE MENTIONED CORNER HAS ABOUT A 0° 46' ANGLE ON IT WHICH IS TOO MUCH FOR A RANGE LINE IN RELATIVELY FLAT GROUND LIKE THIS.

I FOUND AND USED MONUMENTS AT THE NE CORNER AND S 1/4 CORNER OF SECTION 23, WHICH OTHER SURVEYORS HAVE USED, BUT THE ORIGINS ARE UNKNOWN. ALSO, I USED THE IRON PIPE AT THE NW CORNER OF SECTION 23 WHICH WAS AT A NEW CHAIN LINK FENCE CORNER WHICH THE OWNER OF THE LAND IN SECTION 23 SAID HE BUILT IN THE SAME LOCATION AS AN OLD FENCE CORNER. THE BRASS CAP WHICH I USED AS BEING 20 FEET SOUTH OF THE SE CORNER OF SECTION 23 WAS MARKED UP AND THE ONLY THING LEGIBLE ON IT WAS '1975', AND THERE WAS NO RECORD OF IT BEING SET.

I USED A 2" O.D. IRON PIPE I FOUND AT THE E 1/4 CORNER OF SECTION 27 BECAUSE IT IS AT THE INTERSECTION OF THE CENTERLINE OF TWO COUNTY ROADS. THE EAST-WEST ROAD WAS SURVEYED IN 1908 BY KIMBRELL AS CO. RD. #651 AND FERRY SURVEYED CO. RD. #811 NORTH FROM THE 1/4 CORNER IN 1920.

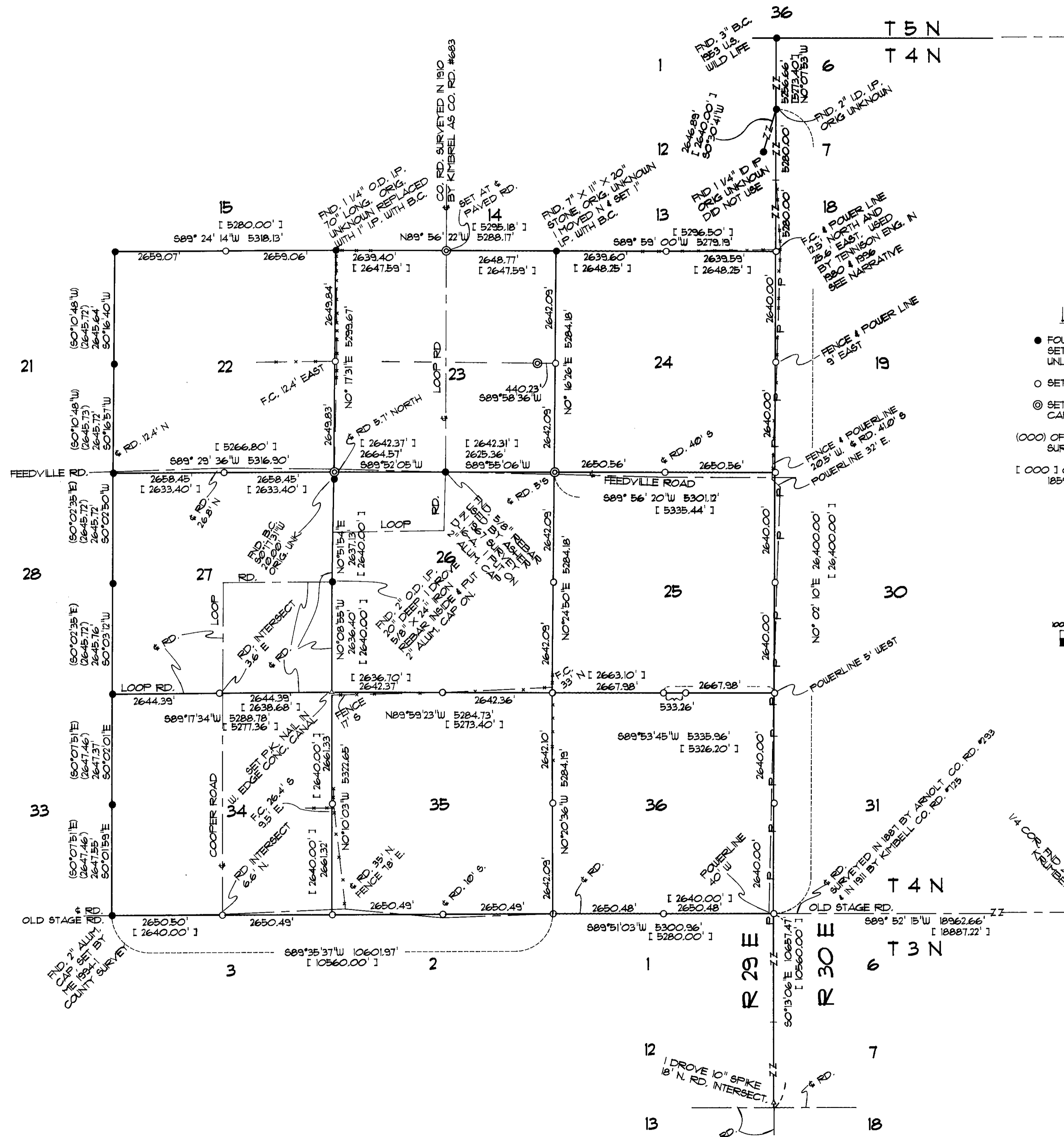
I ESTABLISHED THE SE CORNER OF SECTION 27 AT THE INTERSECTION OF THE CENTERLINE OF TWO ROADS. THIS CORNER FITS VERY WELL PROPORTIONALLY EAST AND WEST WITH IMPROVEMENTS AND MONUMENTS. IT ALSO FITS WELL PROPORTIONALLY WITH THE E 1/4 CORNER AND THE NE CORNER OF SECTION 27, BUT IT IS TOO FAR NORTH WHEN CONSIDERING THE SE CORNER OF SECTION 34. SINCE IT WAS CUSTOMARY TO SURVEY ROADS ALONG SECTION LINES IN THIS COUNTRY, I USED THE ROAD INTERSECTION AS A MONUMENT.

THE CONTROL AND THE FOUND MONUMENTS WERE TIED BY JOHN BAALMAN OF ROGER'S SURVEYING BY G.P.S. USING TRIMBLE 40006T AND 400066I RECEIVERS. THE STATE PLANE COORDINATED ARE NAD 83/91 NORTH ZONE USING NGS HIGH PRECISION GEODETIC CONTROL NETWORK POINT B340 AND STANFIELD EAST BASE RESET. THE BEARINGS ARE TRUE BASED ON A ROTATION OF + 0° 58' 37.9" AT THE E 1/4 OF SECTION 25. THE COMBINED SCALE FACTOR OF 1.00007839 TO GROUND DISTANCE WAS USED. I USED A PENTAX FT5 III 10 TOTAL STATION TO SET THE MONUMENTS FROM THE CONTROL.

REGISTERED PROFESSIONAL LAND SURVEYOR  
*G. Dennis Edwards*  
 OREGON REG. NO. 1971  
 G. DENNIS EDWARDS  
 951  
 HERMISTON 97131/99

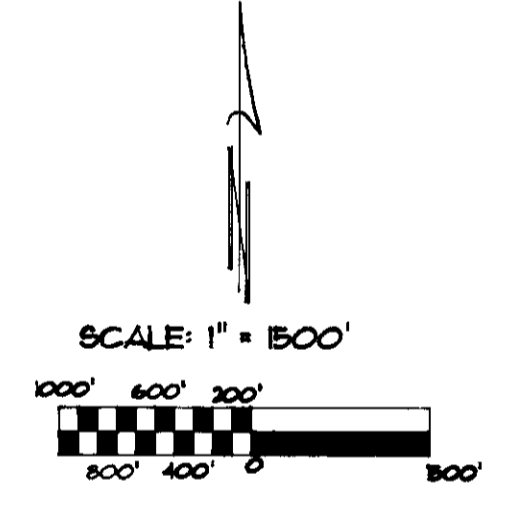
NAD 83/91 OREGON STATE PLANE COORDINATES NORTH ZONE			
CORNER	DESCRIPTION	NORTH	EAST
T4N, R29E 16   21 22	2 3/8" B.C.	788040.88035	8537506.05191
T4N, R29E 1/4 28   27	2 3/8" B.C.	780105.16056	8537613.36169
T4N, R29E 33   34 4   3	2" ALUM. CAP	772166.26200	8537749.38210
T4N, R29E 1/4 23 27	2" ALUM. CAP	782939.57430	8545548.99037
T4N, R29E 1/4 27   26	2" ALUM. CAP	780751.08353	8542890.29661
T5N R29E R30E 1   6 T4N	3" B.C.	804176.43702	8553135.80718
R29E T4N R30E 36   31 1   6 T3N	2 3/8" B.C.	772526.395	8553646.954

**1996-2 UMATILLA COUNTY PUBLIC MONUMENTATION**



**LEGEND**

- FOUND 1" X 30" IRON PIPE WITH 2 3/8" BRASS CAP SET BY ME IN 1995 COUNTY SURVEY 1994-1 UNLESS NOTED OTHERWISE
- SET 1" X 30" IRON PIPE WITH 2 3/8" BRASS CAP
- ⊙ SET 5/8" X 30" IRON REBAR WITH 2" ALUMINUM CAP, OR PLASTIC CAP #951
- (OOO) OF RECORD, MY 1995 COUNTY MONUMENTATION SURVEY AREA 1994-1
- I OOO I OF RECORD, ORIGINAL GLO SURVEYS 1859 TO 1861. SEE NARRATIVE.



RECEIVED BY  
 Checked by: \_\_\_\_\_  
 Date: 10-98  
 Rechecked by: KK  
 No. 98-213-C

SURVEY FOR UMATILLA COUNTY  
 IN SE 1/4, T4N, R29E, UMATILLA  
 COUNTY, OREGON, SECTIONS 22, 23, 24,  
 25, 26, 27, 34, 35, 4 36.  
 8/31/98 JOB NO. COUNTY-G  
 EDWARDS SURVEYING P.O. BOX 763  
 541-567-3336 HERMISTON, OR 97803  
 DRAWN BY: LLC