

CORNER NOTES

CORNER 0-21
QUARTER CORNER COMMON TO SECTIONS 23 AND 24, TOWNSHIP 5 NORTH, RANGE 37 EAST OF THE WILLAMETTE MERIDIAN, UMATILLA COUNTY, OREGON.

CORNER PERPETUATION: AT THE MIDPOINT OF A LINE BETWEEN THE N.W. AND S.W. CORNERS OF SECTION 24, SET A 5/8"x30" REBAR 20" IN THE GROUND WITH A 2" ALUMINUM CAP STAMPED "TOMKINS SURVEYING, TSN R37E, 1/4 523 524, 1947 PLS 2820, MA25843 OR2360" ATTACHED. FROM WHICH:

A 24" DOUGLAS FIR BEARS N04 1/4" N 41.4 FT. MARKED 1/4 523 BT.
A 26" PONDEROSA PINE BEARS N73 1/4" E 149.3 FT. MARKED 1/4 524 BT.
SET A 6 FT. STEEL FENCE POST WITH A SURVEY MONUMENT SIGN ATTACHED 1 FT. NORTH OF THE CORNER.

CORNER 0-21
THE SOUTH 1/16 CORNER COMMON TO SECTIONS 23 AND 24, TOWNSHIP 5 NORTH, RANGE 37 EAST OF THE WILLAMETTE MERIDIAN, UMATILLA COUNTY, OREGON.

CORNER 0-21
HISTORY: NONE
EVIDENCE FOUND: NONE

CORNER PERPETUATION: AT THE SURVEYED POSITION SET A 5/8"x30" REBAR 12" IN THE GROUND TO BEDROCK AND SURROUNDED WITH A MOUND OF STONES, WITH A 2" ALUMINUM CAP STAMPED "TOMKINS SURVEYING, TSN R37E, 51/16 523 524, 1947, PLS 2820, MA25843 OR2360" ATTACHED. FROM WHICH A 24" PONDEROSA PINE WITH NO MARKINGS BEARS 518" N 340 FT. SET A STEEL FENCE POST 175 FT NORTH OF THE CORNER ON THE LINE COMMON TO SECTIONS 23 AND 23.

CORNER 0-21
THIS CORNER IS LOCATED ON THE WEST SIDE OF A STEEP NARROW RIDGE ON THE EAST SIDE OF LITTLE MEADOW CREEK, 40 FT. WEST OF THE CREST OF THE RIDGE.

CORNER NOTES

CORNER R-23
QUARTER CORNER COMMON TO SECTIONS 24 AND 25, TOWNSHIP 5 NORTH, RANGE 37 EAST OF THE WILLAMETTE MERIDIAN, UMATILLA COUNTY, OREGON.

CORNER PERPETUATION: AT THE PROPORTIONATE DISTANCE BETWEEN THE N.W. AND N.E. CORNERS OF SECTION 25, SET A 5/8"x30" REBAR 20" IN THE GROUND WITH A 2" ALUMINUM CAP STAMPED "TOMKINS SURVEYING, TSN R37E, 1/4 524 525, 1947, PLS2820, MA25843 OR2360" ATTACHED. FROM WHICH:

A 12" DOUGLAS FIR BEARS S42 1/4" N 0.3 FT. MARKED 1/4 526 BT.
AN "X" ON TOP OF 48"x48"x48" BOULDER BEARS NS 3/4" E 13.1 FT. THIS BOULDER IS AT THE BASE OF THE HILL IN THE BOTTOM OF A DEEP Ravine AND HAS A STEEL FENCE POST WITH A BEARING OBJECT SIGN ATTACHED SET ON THE WEST SIDE OF IT.

CORNER V-17
SECTION CORNER COMMON TO SECTIONS 26, 27, 34 AND 35, TOWNSHIP 5 NORTH, RANGE 37 EAST OF THE WILLAMETTE MERIDIAN, UMATILLA COUNTY, OREGON.

CORNER PERPETUATION: NO EVIDENCE OF ORIGINAL OR PERPETUATED CORNERS COULD BE FOUND TO THE EAST OR WEST. THE EXISTING OLD FENCE WAS HELD FOR THE EASTINGS OF THIS CORNER THE NORTHING WAS CALCULATED AS A PROPORTIONATE MEASUREMENT OF THE DIFFERENCE OF THE NORTHING OF THE NORTHING OF SECTION 26 TO SECTIONS 22 AND 23 AND THE FOUND SECTION CORNER COMMON TO SECTIONS 34 AND 35.

CORNER V-21
SECTION CORNER COMMON TO SECTIONS 25, 26, 35 AND 36, TOWNSHIP 5 NORTH, RANGE 37 EAST OF THE WILLAMETTE MERIDIAN, UMATILLA COUNTY, OREGON.

CORNER PERPETUATION: AT THE LOCATION DETERMINED BY DOUBLE PROPORTIONATE MEASUREMENT SET A 5/8"x30" REBAR 18" IN THE GROUND TO REFUSAL AND SURROUNDED WITH A MOUND OF STONES. A 2" ALUMINUM CAP STAMPED "TOMKINS SURVEYING, TSN R37E 525 526 536 535, 1947, OR2820, MA25843 OR2360" WAS ATTACHED TO THE REBAR. FROM WHICH:

A FIR 7 IN., DIA., BEARS N01 E 3 LKS. DIST.
A FIR 10 IN., DIA., BEARS N18 0' E 4 LKS. DIST.
A FIR 4 IN., DIA., BEARS S11 E 41 LKS. DIST.
A SPRUCE 5 IN., DIA., BEARS S31 N 110 LKS. DIST.

CORNER PERPETUATION: AT THE LOCATION DETERMINED BY DOUBLE PROPORTIONATE MEASUREMENT SET A 5/8"x30" REBAR 18" IN THE GROUND TO REFUSAL AND SURROUNDED WITH A MOUND OF STONES. A 2" ALUMINUM CAP STAMPED "TOMKINS SURVEYING, TSN R37E 525 526 536 535, 1947, OR2820, MA25843 OR2360" WAS ATTACHED TO THE REBAR. FROM WHICH:

A 12" DOUGLAS FIR BEARS N65 07' E 33.7 FT. MARKED TSN R37E 525 BT.
A 8" DOUGLAS FIR BEARS S38 46' E 43.9 FT. MARKED TSN R37E 536 BT.
A 12"x12"x24" ROCK OUTCROPPING WITH AN "X" CHISELED 6" ABOVE THE CORNER BEARS S42 26' N 12.3 FT.
A 19" DOUGLAS FIR SITUATED ON THE CREST OF A NARROW RIDGE BEARS N40 51' N 61.6 FT. MARKED TSN R37E 526 BT.

CORNER NOTES

CORNER R-13
SECTION CORNER COMMON TO SECTIONS 21, 22, 27, AND 28, TOWNSHIP 5 NORTH, RANGE 37 EAST OF THE WILLAMETTE MERIDIAN, UMATILLA COUNTY OREGON.

CORNER PERPETUATION: SET A 5/8"x30" REBAR 15" IN THE GROUND TO BED ROCK WITH A 2" ALUMINUM CAP STAMPED "TOMKINS SURVEYING, TSN R37E, 521 522 527 528, 1947, PLS2820, MA25843 OR2360" ATTACHED. SURROUNDED WITH A MOUND OF STONES. THE FOUND STONE WAS SET ALONGSIDE OF THE REBAR IN THE MOUND OF STONE. ATTACHED A SURVEY MONUMENT SIGN TO THE REBAR.

CORNER R-21
SECTION CORNER COMMON TO SECTIONS 23, 24, 25 & 24, TOWNSHIP 5 NORTH, RANGE 37 EAST OF THE WILLAMETTE MERIDIAN, UMATILLA COUNTY, OREGON.

CORNER PERPETUATION: AT THE POSITION DETERMINED BY DOUBLE PROPORTIONATE MEASUREMENT, SET A 5/8"x30" REBAR 20" IN THE GROUND WITH A 2" ALUMINUM CAP STAMPED "TOMKINS SURVEYING, TSN R37E, 524 525 526, 1947, OR2820, MA25843 OR2360" ATTACHED. FROM WHICH:

A 16" DOUGLAS FIR BEARS N12 2' N 28.0 FT. MARKED TSN R37E 523 BT.
A 15" WESTERN LARCH BEARS S20 E 18.0 FT. MARKED TSN R37E 525 BT.
A 6" DOUGLAS FIR BEARS S41 N 16.5 FT. MARKED TSN R37E 526 BT.

CORNER V-25
SECTION CORNER COMMON TO SECTIONS 25 AND 36, TOWNSHIP 5 NORTH, RANGE 37 EAST OF THE WILLAMETTE MERIDIAN, UMATILLA COUNTY, RANGE 38 EAST OF THE WILLAMETTE MERIDIAN, UMATILLA COUNTY, OREGON.

CORNER PERPETUATION: AT THE POSITION DETERMINED BY SINGLE PROPORTIONATE MEASUREMENT BETWEEN THE FOUND N.E. CORNER OF SECTION 25, T.S.N., R.37 E. AND THE FOUND EAST 1/4 CORNER OF SECTION 36, T.S.N., R.37 E. THIS CORNER POSITION FALLS IN THE CENTER OF A LOGGING ROAD. THE SET A RAIL ROAD SPIKE STAMPED "OR2820" AT THE CORNER POSITION. FROM WHICH:

A 5/8"x30" REBAR WITH A 2" ALUMINUM CAP STAMPED "TOMKINS SURVEYING, TSN R37E, 525 530 531, 536, 1947, OR2820, MA25843, OR2360", SET ON THE NORTH SHOULDER OF THE ROAD ON THE LINE COMMON TO SECTIONS 25 AND 30, BEARS N01 20' N 40.00 FEET.

CORNER X-25
1/4 CORNER COMMON TO SECTION 36, TOWNSHIP 5 NORTH RANGE 37 EAST AND SECTION 31 TOWNSHIP 5 NORTH RANGE 38 EAST OF THE WILLAMETTE MERIDIAN, UMATILLA COUNTY, OREGON.

CORNER PERPETUATION: NO EVIDENCE OF ORIGINAL OR PERPETUATED CORNERS COULD BE FOUND TO THE EAST OR WEST. THE EXISTING OLD FENCE WAS HELD FOR THE EASTINGS OF THIS CORNER THE NORTHING WAS CALCULATED AS A PROPORTIONATE MEASUREMENT OF THE DIFFERENCE OF THE NORTHING OF THE NORTHING OF SECTION 26 TO SECTIONS 22 AND 23 AND THE FOUND SECTION CORNER COMMON TO SECTIONS 34 AND 35.

CORNER V-17
SECTION CORNER COMMON TO SECTIONS 26, 27, 34 AND 35, TOWNSHIP 5 NORTH, RANGE 37 EAST OF THE WILLAMETTE MERIDIAN, UMATILLA COUNTY, OREGON.

CORNER PERPETUATION: NO EVIDENCE OF ORIGINAL OR PERPETUATED CORNERS COULD BE FOUND TO THE EAST OR WEST. THE EXISTING OLD FENCE WAS HELD FOR THE EASTINGS OF THIS CORNER THE NORTHING WAS CALCULATED AS A PROPORTIONATE MEASUREMENT OF THE DIFFERENCE OF THE NORTHING OF THE NORTHING OF SECTION 26 TO SECTIONS 22 AND 23 AND THE FOUND SECTION CORNER COMMON TO SECTIONS 34 AND 35.

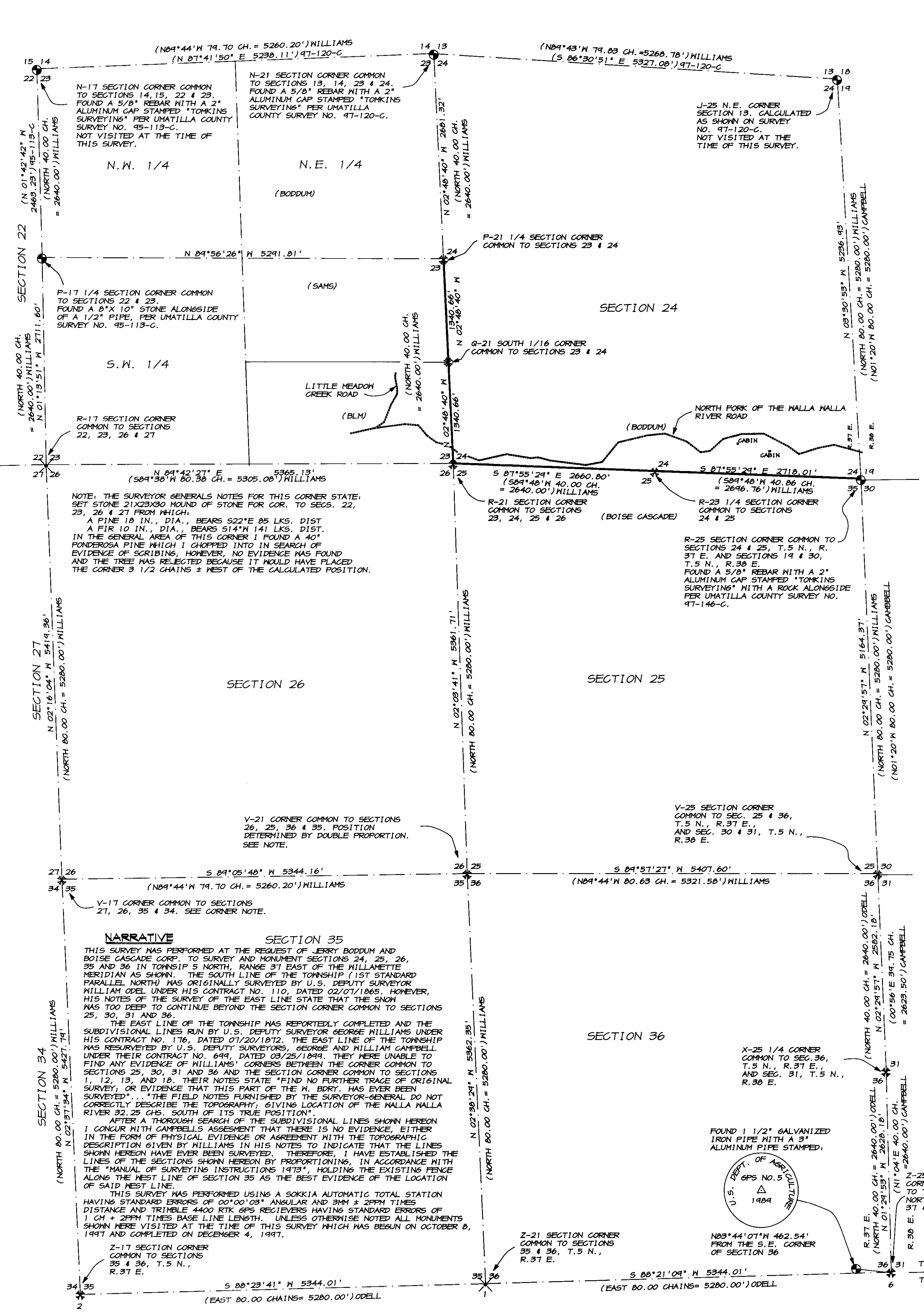
CORNER V-21
SECTION CORNER COMMON TO SECTIONS 25, 26, 35 AND 36, TOWNSHIP 5 NORTH, RANGE 37 EAST OF THE WILLAMETTE MERIDIAN, UMATILLA COUNTY, OREGON.

CORNER PERPETUATION: AT THE LOCATION DETERMINED BY DOUBLE PROPORTIONATE MEASUREMENT SET A 5/8"x30" REBAR 18" IN THE GROUND TO REFUSAL AND SURROUNDED WITH A MOUND OF STONES. A 2" ALUMINUM CAP STAMPED "TOMKINS SURVEYING, TSN R37E 525 526 536 535, 1947, OR2820, MA25843 OR2360" WAS ATTACHED TO THE REBAR. FROM WHICH:

A 12" DOUGLAS FIR BEARS N65 07' E 33.7 FT. MARKED TSN R37E 525 BT.
A 8" DOUGLAS FIR BEARS S38 46' E 43.9 FT. MARKED TSN R37E 536 BT.
A 12"x12"x24" ROCK OUTCROPPING WITH AN "X" CHISELED 6" ABOVE THE CORNER BEARS S42 26' N 12.3 FT.
A 19" DOUGLAS FIR SITUATED ON THE CREST OF A NARROW RIDGE BEARS N40 51' N 61.6 FT. MARKED TSN R37E 526 BT.

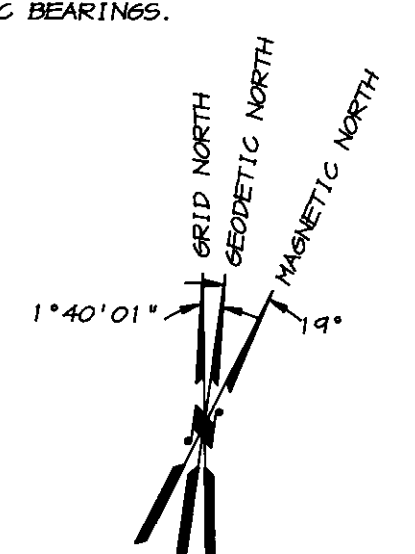
REFERENCES

UMATILLA COUNTY SURVEY NO. 45-113-C
UMATILLA COUNTY SURVEY NO. 47-120-C
UMATILLA COUNTY SURVEY NO. 47-146-C
GOVERNMENT LAND OFFICE NOTES
BOISE CASCADE CORPORATION CORNER CARDS



BASIS OF BEARINGS

BEARINGS SHOWN ARE BASED ON THE OREGON STATE FLAME COORDINATE SYSTEM NORTH ZONE, NAD 83-91, FROM A GPS NETWORK USING ASHTACH DUAL FREQUENCY RECEIVERS CONNCTED TO GPS STATIONS "MALLA R 2" AND "ATHENA" AS DETERMINED BY GPS OBSERVATIONS TAKEN NEAR THE N.W. CORNER OF SECTION 22 USING TRIMBLE DUAL FREQUENCY RTK RECEIVERS. A CLOCK NISE ROTATION OF 1.40 01" NEEDS TO BE APPLIED TO THE BEARINGS SHOWN TO ACHIEVE GEODETIC BEARINGS.



LEGEND

- LINE SURVEYED AND POSTED WITH 6" STUDDED "T" STEEL FENCE POSTS
SECTION OR 1/4 SECTION LINE
FOUND SURVEY MONUMENT AS NOTED
FOUND EVIDENCE OF ORIGINAL GLO CORNER, SET MONUMENT AS NOTED
SET MONUMENT AS NOTED AT CALCULATED POSITION
CALCULATED POSITION, NOTHING FOUND, NOTHING SET
RECORD DIMENSIONS AS NOTED

CORNER NOTES

CORNER R-17
SECTION CORNER COMMON TO SECTION 34 AND 35, TOWNSHIP 5 NORTH, RANGE 37 EAST OF THE WILLAMETTE MERIDIAN, UMATILLA COUNTY, OREGON.
HISTORY: THIS CORNER WAS ORIGINALLY SET BY U.S. DEPUTY SURVEYOR WILLIAM ODELL UNDER HIS CONTRACT NO. 110 DATED 02/07/1865. THE SURVEYOR GENERAL'S NOTES STATE, SET STANDARD CORNER FOR SECS. 34 & 35 FROM WHICH:
A LARCH TREE 14 INCHES IN DIAMETER BEARING NORTH 50° N TO LKS.
A LARCH 24 IN., DIA., BEARS N70 E 100 LKS.
A FIR 24 IN., DIA., BEARS S44 E 30 LKS.
EVIDENCE FOUND: FOUND A DOWN AND ROTTED 15" LARCH WITH VISIBLE AXE MARKS AND A 36" ROTTED STUMP.
CORNER PERPETUATION: SET A 2 1/2" x 30" ALUMINUM PIPE 28" IN THE GROUND WITH A 2 1/2" MAGNETIZED ALUMINUM PIPE 28" IN THE GROUND WITH A 2 1/2" MAGNETIZED ALUMINUM CAP STAMPED "TSN R.37 E. R.30 E. 5.36, 5.31, T.4 N., 5.6, 1947, PLS 2820", 32" IN THE GROUND SURROUNDED WITH A MOUND OF EARTH FROM WHICH:
A TAMPARACK 10 INS. DIAM. BEARS N70 1/2' E 77 LKS. DIST.
A ROTTED STUMP WITH AXE MARKS BEARS S06 30' N 52.0 FT. (80 LKS.)
THE BURIED REMAINS OF A ROTTED STUMP BEARS N24 30' E 14.0 FT. (21 LKS.)
A ROTTED STUMP WITH AXE MARKS BEARS N73 N 39.6 FT. (60 LKS.)
NEW BEARING TREE, A 6" PONDEROSA PINE BEARS S19 1/2' E 47.1 FT. MARKED TAN R37E 56 BT.
NEW BEARING TREE, A 15" DOUGLAS FIR BEARS S20 N 34.1 FT. MARKED TAN R37E 51 BT.
NEW BEARING TREE, A 12" WHITE FIR BEARS N23 1/2' N 47.1 FT. MARKED TSN R37E 536 BT.
NEW BEARING TREE, A 7" ENGLEMAN SPRUCE BEARS N32 E 21.5 FT. MARKED TSN R37E 531 BT.
A STEEL FENCE POST WAS SET 2 FT. NORTH OF THE CORNER, WITH A SURVEY MONUMENT SIGN ATTACHED.

SCALE: 1"=800 FEET

REGISTERED PROFESSIONAL LAND SURVEYOR
Greg E. Flowers
OREGON
JUNE 30, 1997
GREG E. FLOWERS
RENEWS 12/31/1999
12/30/1997

Umatilla County Surveyor
Date: 1-98
Rec'd by: KK
No. 98-004-C
TOMKINS LAND SURVEYING INC.
20 EAST POPLAR SUITE 204 WALLA WALLA, WA 99362
FOR: MR. JERRY BODDUM, 15 HILLCREST COURT, BERKLY, CA 94705
AND BOISE CASCADE CORPORATION, N.E. OREGON REGION
90 SOUTH 21st ST. ELGIN, OR 97827
SHEET 1 OF 1