

**BASIS OF BEARINGS**  
 BEARINGS ARE BASED ON THE OREGON STATE COORDINATE SYSTEM, NORTH ZONE, NAD 83-91, FROM A GPS CONTROL NETWORK ESTABLISHED USING ASHTECH DUAL FREQUENCY RECEIVERS. NGS STATIONS "WALAZR" AND "ATHENA" WERE HELD AS CONTROLLING FOR SAID TRAVERSE. THE TA ANGLE AT THE SOUTHWEST CORNER OF SECTION 13 IS +1°40'13".

SCALE: 1"=500 FEET  
 0 250 500 1000

**LINE TABLE**

NO.	BEARING	DISTANCE
L1	S 77°00'55" E	67.87'
L2	N 85°30'17" E	246.14'
L3	N 83°33'05" E	271.18'
L4	N 51°00'23" E	137.24'
L5	N 22°47'14" E	75.61'
L6	N 32°16'52" E	152.57'
L7	N 71°34'18" E	249.72'
L8	N 27°40'03" W	105.46'
L9	N 64°39'30" E	61.55'
L10	S 63°01'00" E	77.59'
L11	S 41°52'42" E	305.86'
L12	N 19°30'41" E	171.41'
L13	S 05°07'38" E	127.62'
L14	S 57°41'18" E	277.78'
L15	S 55°25'22" E	217.47'
L16	S 34°15'33" E	179.86'
L17	S 81°51'16" E	106.62'
L18	S 80°27'17" E	261.72'
L19	S 76°23'28" E	72.83'
L20	N 89°11'14" E	17.33'
L21	S 54°50'43" E	203.73'
L22	S 39°03'58" E	253.67'
L23	S 74°51'45" E	134.72'
L24	N 80°09'54" E	302.30'
L25	N 61°47'27" E	268.69'
L26	N 87°17'19" E	167.49'
L27	N 81°08'22" E	197.46'
L28	N 61°24'38" E	219.32'
L29	N 85°31'02" E	149.40'
L30	S 73°50'25" E	450.41'
L31	S 81°06'11" E	204.52'
L32	N 75°33'14" E	197.83'
L33	S 85°18'24" E	156.39'
L34	S 74°30'33" E	186.65'
L35	S 65°25'54" E	157.38'
L36	S 73°23'52" E	182.34'
L37	N 80°46'03" E	154.77'
L38	S 65°21'48" E	187.99'
L39	N 89°17'52" W	54.99'
L40	N 00°06'47" E	5.42'
L41	N 05°23'28" E	366.87'
L42	S 78°01'49" W	186.65'
L43	S 83°33'57" W	253.23'
L44	S 79°53'10" W	114.87'
L45	N 07°20'25" W	77.39'
L46	N 01°42'02" E	133.55'
L47	N 03°53'30" E	198.95'
L48	N 04°56'22" W	108.12'
L49	N 08°31'34" W	95.44'
L50	N 07°25'47" W	303.72'
L51	N 14°35'09" W	184.55'
L52	N 05°31'33" E	326.62'
L53	N 08°19'02" E	247.06'
L54	N 08°19'02" E	43.00'
L55	S 89°17'52" E	246.61'

**NARRATIVE**  
 THIS SURVEY WAS PERFORMED AT THE REQUEST OF MR. JERRY BODDUM TO REARRANGE PARCEL BOUNDARIES FOR ESTATE MANAGEMENT PURPOSES. WE HAVE SURVEYED MOST OF THESE LANDS PREVIOUSLY PER SURVEYS 95-113-C, 95-76-C, A SURVEY FOR BOSIO NO. 97-120-C, SURVEY 92-106-C, AND SURVEY 94-122-C.  
 OUR ADDITIONAL WORK AT THIS TIME INCLUDES A BREAKDOWN AND MONUMENTATION IN SECTION 19, AND MONUMENTATION IN SECTIONS 14 AND 23. THE ROAD ALIGNMENT ACROSS THE NORTH LINE OF REVISED TAX LOT 1600 WAS DETERMINED BY REAL TIME KINEMATIC G.P.S. SURVEY OF ACTUAL ROAD CENTERLINE, AND THE WORK IN SECTION 19 WAS PERFORMED USING TRADITIONAL CLOSED TRAVERSE METHODS USING A SOKKIA AUTOMATIC TOTAL STATION WITH STANDARD ERRORS OF 3 MM ± 2 PPM AND 0°00'02".

**LEGEND**

- SECTION OR SECTION SUBDIVISION LINE
- RIGHT OF WAY LINE
- PARCEL BOUNDARY
- FENCE LINE
- CALCULATED POINT, NOT FOUND OR SET
- FOUND SURVEY MONUMENT AS DESCRIBED
- SET 5/8" X 30" REBAR WITH PLASTIC YELLOW CAP STAMPED "TOMKINS SURVEYING"

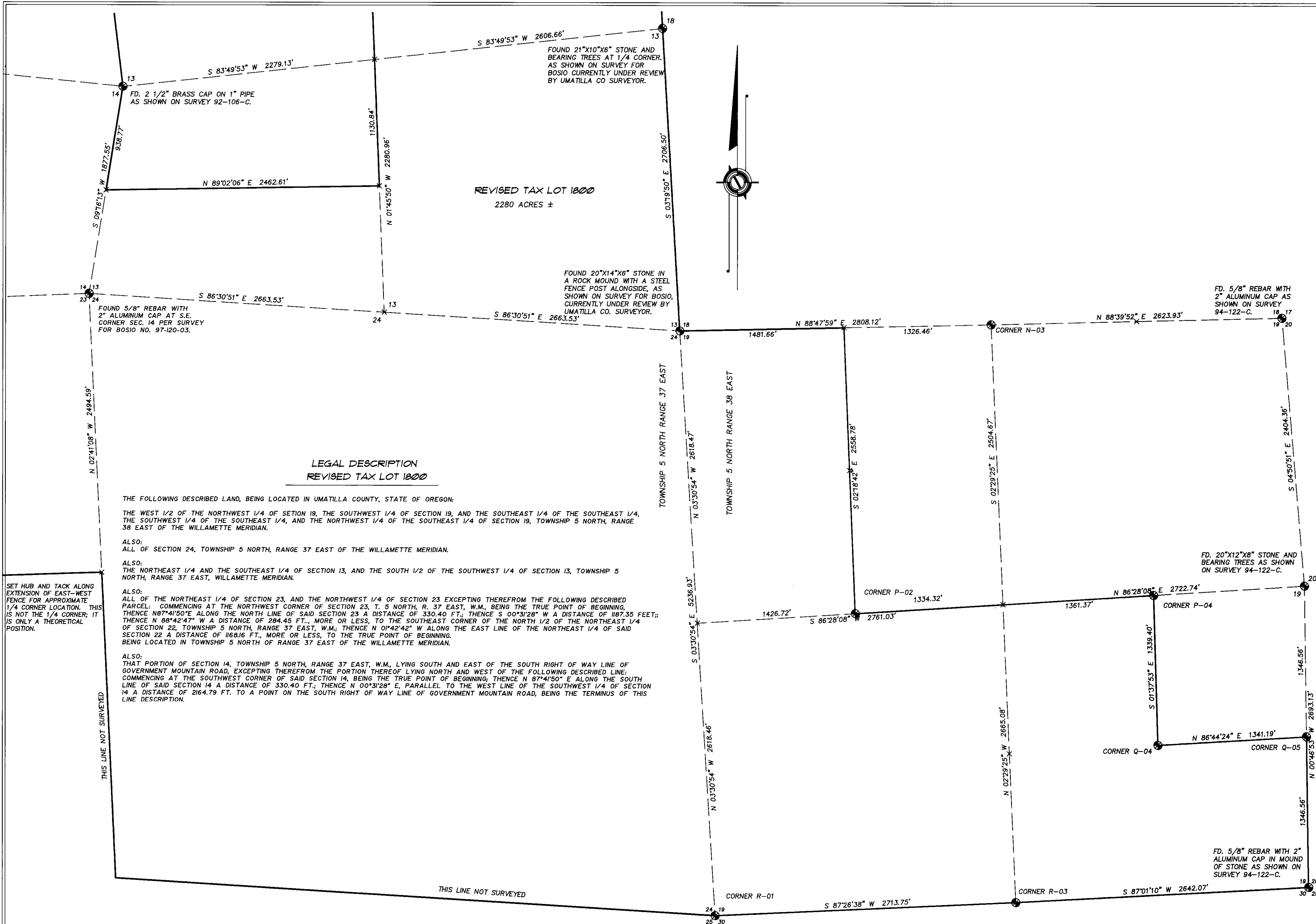
**LEGAL DESCRIPTION**  
 A tract of land in the N.W. 1/4, the S.W. 1/4, and the S.E. 1/4 of Section 15, in the Southwest 1/4 of Section 14, and in the Northwest 1/4 of Section 23, and in the Northeast 1/4 of Section 22 of Township 5 North, Range 37 East, W.M., Umatilla Co., Oregon, being described more particularly as follows:  
 Commencing at the Northeast corner of said Section 15;  
 THENCE North 89 degrees 18 minutes 50 seconds West for a distance of 5458.14 feet along the North line of Section 15 to the Northwest corner thereof;  
 THENCE South 01 degrees 48 minutes 40 seconds East for a distance of 2300.42 feet along the West line of the Northwest 1/4 of said Section 15 to a point on the South right of way line of Government Mt. road, being the True Point of Beginning; thence along said South right of way line by the following courses:  
 North 85 degrees 30 minutes 17 seconds East for a distance of 246.14 feet;  
 THENCE North 83 degrees 33 minutes 05 seconds East for a distance of 271.18 feet;  
 THENCE North 51 degrees 00 minutes 23 seconds East for a distance of 137.24 feet;  
 THENCE North 22 degrees 47 minutes 14 seconds East for a distance of 75.61 feet;  
 THENCE North 32 degrees 16 minutes 52 seconds East for a distance of 152.57 feet;  
 THENCE North 71 degrees 34 minutes 18 seconds East for a distance of 249.72 feet;

THENCE South 74 degrees 51 minutes 45 seconds East for a distance of 134.72 feet;  
 THENCE North 80 degrees 09 minutes 54 seconds East for a distance of 302.30 feet;  
 THENCE North 61 degrees 47 minutes 27 seconds East for a distance of 268.69 feet;  
 THENCE North 87 degrees 17 minutes 19 seconds East for a distance of 167.49 feet;  
 THENCE North 81 degrees 06 minutes 22 seconds East for a distance of 197.46 feet;  
 THENCE North 61 degrees 24 minutes 38 seconds East for a distance of 219.32 feet;  
 THENCE North 85 degrees 31 minutes 02 seconds East for a distance of 149.40 feet;  
 THENCE South 73 degrees 58 minutes 25 seconds East for a distance of 450.41 feet;  
 THENCE South 81 degrees 06 minutes 11 seconds East for a distance of 204.52 feet;  
 THENCE North 75 degrees 33 minutes 14 seconds East for a distance of 197.83 feet;  
 THENCE South 85 degrees 18 minutes 24 seconds East for a distance of 156.39 feet;  
 THENCE South 74 degrees 30 minutes 33 seconds East for a distance of 153.79 feet;  
 THENCE South 65 degrees 25 minutes 54 seconds East for a distance of 184.55 feet;  
 THENCE South 73 degrees 23 minutes 52 seconds East for a distance of 326.62 feet;  
 THENCE North 80 degrees 46 minutes 03 seconds East for a distance of 154.77 feet;  
 THENCE South 65 degrees 21 minutes 48 seconds East for a distance of 120.44 feet;  
 THENCE South 00 degrees 31 minutes 28 seconds East for a distance of 3352.14 feet, along a line parallel to the East line of the Southeast 1/4 of Section 15, and the Southerly extension thereof;  
 THENCE North 88 degrees 42 minutes 47 seconds West for a distance of 284.45 feet, more or less, to the Southeast corner of the North 1/2 of the Northeast 1/4 of said Section 22;  
 THENCE North 88 degrees 42 minutes 47 seconds West for a distance of 284.42 feet, more or less, to the Southwest corner of the North 1/2 of the Northeast 1/4 of said Section 22;  
 THENCE North 00 degrees 38 minutes 37 seconds West for a distance of 1140.70 feet, more or less, to the Southwest corner of the Southeast 1/4 of said Section 15;  
 THENCE North 00 degrees 38 minutes 37 seconds West for a distance of 1312.06 feet to the Southeast corner of the Northeast 1/4 of the Southwest 1/4 of said Section 15;  
 THENCE North 00 degrees 38 minutes 37 seconds West for a distance of 3352.14 feet, along the South line of the Northeast 1/4 of the Southwest 1/4 of Section 15;  
 THENCE North 00 degrees 06 minutes 47 seconds East for a distance of 5.42 feet;  
 THENCE North 05 degrees 23 minutes 28 seconds East for a distance of 366.87 feet;

THENCE South 78 degrees 01 minutes 49 seconds West for a distance of 188.65 feet;  
 THENCE South 81 degrees 54 minutes 06 seconds West for a distance of 1332.63 feet;  
 THENCE South 82 degrees 31 minutes 54 seconds West for a distance of 885.15 feet to a point on the South line of the Northwest 1/4 of the Southwest 1/4 of said Section 15;  
 THENCE South 83 degrees 33 minutes 57 seconds West for a distance of 253.23 feet;  
 THENCE North 03 degrees 53 minutes 10 seconds West for a distance of 114.87 feet;  
 THENCE North 07 degrees 20 minutes 25 seconds West for a distance of 77.39 feet;  
 THENCE North 01 degrees 42 minutes 02 seconds East for a distance of 133.55 feet;  
 THENCE North 03 degrees 53 minutes 30 seconds East for a distance of 198.95 feet;  
 THENCE North 04 degrees 56 minutes 22 seconds West for a distance of 108.12 feet;  
 THENCE North 08 degrees 31 minutes 34 seconds East for a distance of 96.44 feet;  
 THENCE North 07 degrees 25 minutes 47 seconds East for a distance of 303.72 feet;  
 THENCE North 14 degrees 35 minutes 09 seconds West for a distance of 184.55 feet;  
 THENCE North 05 degrees 31 minutes 33 seconds East for a distance of 326.62 feet;  
 THENCE North 08 degrees 19 minutes 02 seconds East for a distance of 247.06 feet;  
 THENCE North 08 degrees 19 minutes 02 seconds East for a distance of 43.00 feet to a point on the South right of way line of Government Mountain Road;  
 THENCE South 77 degrees 00 minutes 55 seconds East for a distance of 67.87 feet, along the South line of Government Mountain Road to the True Point of Beginning.

Together with and subject to covenants, easements, and restrictions of record.  
 Said property contains 324.249 acres more or less.

REGISTERED PROFESSIONAL LAND SURVEYOR  
 RECEIVED BY  
 Umatilla County Surveyor  
 OREGON  
 JULY 28, 1988  
 PAUL W.P. TOMKINS  
 2360  
 RENEWS 6/30/88  
 6/16/87



LEGAL DESCRIPTION  
REVISED TAX LOT 1000

THE FOLLOWING DESCRIBED LAND, BEING LOCATED IN UMATILLA COUNTY, STATE OF OREGON:

THE WEST 1/2 OF THE NORTHWEST 1/4 OF SECTION 19, THE SOUTHWEST 1/4 OF SECTION 19, AND THE SOUTHEAST 1/4 OF THE SOUTHEAST 1/4, THE SOUTHWEST 1/4 OF THE SOUTHEAST 1/4, AND THE NORTHWEST 1/4 OF THE SOUTHEAST 1/4 OF SECTION 19, TOWNSHIP 5 NORTH, RANGE 38 EAST OF THE WILLAMETTE MERIDIAN.

ALSO:  
ALL OF SECTION 24, TOWNSHIP 5 NORTH, RANGE 37 EAST OF THE WILLAMETTE MERIDIAN.

ALSO:  
THE NORTHEAST 1/4 AND THE SOUTHEAST 1/4 OF SECTION 13, AND THE SOUTH 1/2 OF THE SOUTHWEST 1/4 OF SECTION 13, TOWNSHIP 5 NORTH, RANGE 37 EAST, WILLAMETTE MERIDIAN.

ALSO:  
ALL OF THE NORTHEAST 1/4 OF SECTION 23, AND THE NORTHWEST 1/4 OF SECTION 23 EXCEPTING THEREFROM THE FOLLOWING DESCRIBED PARCEL: COMMENCING AT THE NORTHWEST CORNER OF SECTION 23, T. 5 NORTH, R. 37 EAST, W.M., BEING THE TRUE POINT OF BEGINNING; THENCE N87°41'50"E ALONG THE NORTH LINE OF SAID SECTION 23 A DISTANCE OF 330.40 FT.; THENCE S 00°32'28" W A DISTANCE OF 187.35 FEET; THENCE N 88°42'47" W A DISTANCE OF 284.45 FT., MORE OR LESS, TO THE SOUTHEAST CORNER OF THE NORTH 1/2 OF THE NORTHEAST 1/4 OF SECTION 22, TOWNSHIP 5 NORTH, RANGE 37 EAST, W.M.; THENCE N 01°42'42" W ALONG THE EAST LINE OF THE NORTHEAST 1/4 OF SAID SECTION 22 A DISTANCE OF 168.16 FT., MORE OR LESS, TO THE TRUE POINT OF BEGINNING.

BEING LOCATED IN TOWNSHIP 5 NORTH OF RANGE 37 EAST OF THE WILLAMETTE MERIDIAN.

ALSO:  
THAT PORTION OF SECTION 14, TOWNSHIP 5 NORTH, RANGE 37 EAST, W.M., LYING SOUTH AND EAST OF THE SOUTH RIGHT OF WAY LINE OF GOVERNMENT MOUNTAIN ROAD, EXCEPTING THEREFROM THE PORTION THEREOF LYING NORTH AND WEST OF THE FOLLOWING DESCRIBED LINE: COMMENCING AT THE SOUTHWEST CORNER OF SAID SECTION 14, BEING THE TRUE POINT OF BEGINNING; THENCE N 87°41'50" E ALONG THE SOUTH LINE OF SAID SECTION 14 A DISTANCE OF 330.40 FT.; THENCE N 00°32'28" E, PARALLEL TO THE WEST LINE OF THE SOUTHWEST 1/4 OF SECTION 14 A DISTANCE OF 264.79 FT. TO A POINT ON THE SOUTH RIGHT OF WAY LINE OF GOVERNMENT MOUNTAIN ROAD, BEING THE TERMINUS OF THIS LINE DESCRIPTION.

CORNER CODE: N-03  
1/4 CORNER COMMON TO SECTIONS 18 AND 19.  
HISTORY: CORNER WAS ORIGINALLY SET IN 1899 BY CAMPBELL AS A STONE 20"x8"x6" WITH THE FOLLOWING BEARING TREES: AN 18" FIR N83°E 72 LINKS AND A FIR 7" DIAMETER S 16 1/2"W 22 LINKS.  
EVIDENCE FOUND: FOUND 56" DIAMETER FIR WITH PARTLY HEALED BLAZE N85°E 47.5 FT. ALSO FOUND 34" FIR WITH HEALED BLAZE AND BROKEN TOP S17°W 14.5' STONE NOT FOUND.  
PERPETUATION: NONE.

CORNER CODE: P-02  
CENTER-WEST 1/16 CORNER SECTION 19.  
HISTORY: NONE.  
EVIDENCE: NONE.  
PERPETUATION: SET 5/8"x30" REBAR WITH 2" ALUMINUM CAP AND A FENCE POST AND SIGN 1 FT. EAST. CORNER IS 50' EAST OF THE BOTTOM OF A DRAW. S35°W 64.6' FROM THE CORNER I SCRIBED A 22" RED FIR 1/16 BT.

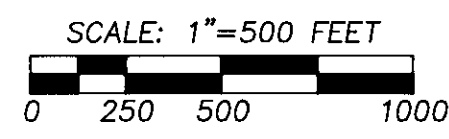
CORNER CODE: P-04  
CENTER-EAST 1/16 CORNER SECTION 19.  
HISTORY: NONE.  
EVIDENCE: NONE.  
PERPETUATION: SET 5/8"x30" REBAR WITH 2" ALUMINUM CAP AND A FENCE POST WITH SIGN 1 FT. NORTH ON A SOUTHEASTERLY FACING HILLSIDE. NO TREES WERE AVAILABLE AT THE CORNER.

CORNER CODE: Q-04  
SOUTH-EAST 1/16 CORNER SECTION 19.  
HISTORY: NONE.  
EVIDENCE: NONE.  
PERPETUATION: SET 5/8"x30" REBAR WITH 2" ALUMINUM CAP ON A ROCK SHELF IN A 15" HIGH BY 30" DIAMETER ROCK MOUND. SET A FENCE POST AND SIGN 2 FT. EAST. S83°W 48.4 FT. FROM THE CORNER I SCRIBED A 15" FIR 1/16 BT.

CORNER CODE: Q-05  
SOUTH 1/16 CORNER S.19/S.20.  
HISTORY: NONE.  
EVIDENCE: NONE.  
PERPETUATION: SET A 5/8"x30" REBAR WITH 2" ALUMINUM CAP AND POST WITH SIGN 1 FT. EAST. NO TREES WERE AVAILABLE. CORNER FALLS ON A KNOLL BETWEEN DRAWSTO THE SOUTHWEST AND SOUTHEAST, 300 FT. NORTH OF THE CONFLUENCE. A SMALL STAND OF FIR TREES IS ABOUT 150 FT. NORTH OF THE CORNER.

CORNER R-01  
SOUTHWEST CORNER OF SECTION 19.  
HISTORY: CORNER WAS SET BY CAMPBELL'S 1899 RESURVEY OF THE DEFECTIVE 1872 WILLIAMS SURVEY AS A STONE 18"x16"x12" WITH AN 18" FIR N76°E 97 LINKS AND A 30" FIR S39°E 66 LINKS.  
EVIDENCE: FOUND 12"x16"x18" POROUS STONE ON THE EAST SIDE OF A DRAW APPROXIMATELY 200 FT. SOUTH OF THE WALLA WALLA RIVER. NO EVIDENCE OF THE TREES WAS FOUND.  
PERPETUATION: I SET A 5/8"x30" REBAR WITH 2" ALUMINUM CAP AND PAVED THE STONE ALONGSIDE. S 37 1/2' E 49.9' FROM THE CORNER I SCRIBED A CROOKED 15" WHITE FIR "TSN R38E S30 BT". N72°E 50.0 FT. FROM THE CORNER I SCRIBED A 16" WHITE FIR "TSN R38E S19 BT". I ALSO SET A FENCE POST AND SIGN 2 FT. WEST OF THE CORNER.

CORNER R-03  
1/4 CORNER COMMON TO SECTIONS 19 AND 30.  
HISTORY: CORNER WAS SET BY CAMPBELL IN 1899 AS A 15"x8"x6" STONE FROM A WHICH A 12" FIR BORE S66°W 2.25 CHAINS AND AN 18" FIR BORE N 62 1/2"W 1.14 CHAINS.  
EVIDENCE: FOUND A 15"x11"x6" STONE WITH A LOW MOUND OF STONES 2 FT. EAST. A 24" STUMP BEARS N62°43'W 78.7' AND A 26" STUMP BEARS S70°10'W 131.3 FT. CORNER FALLS 100 FT. EAST OF A GULLY AND 300 FT. NORTH OF AN EAST-WEST FENCE.  
PERPETUATION: I NAILED BEARING TREE TAGS TO THE TWO STUMPS AND SCRIBED AN 18" WHITE FIR S01°3'W 45.4 FT. FROM THE CORNER 1/4 BT. STONE IS FIRMLY SET; THEREFORE WE DID NOT SET A REBAR.



REGISTERED PROFESSIONAL LAND SURVEYOR

RECEIVED BY  
Umatilla County Surveyor  
Date: 7-99  
Reviewed by: [Signature]  
No. 97-146-C

OREGON  
JULY 28, 1988  
PAUL W.P. TOMKINS  
2360  
RENEWED 6/30/98  
6/18/97

A BOUNDARY ADJUSTMENT SURVEY LOCATED IN SECTIONS 13, 14, 15, 22, 23 AND 24 OF T.5N, R.37E, W.M., AND SECTION 19 OF T.5N, R.37E, W.M., UMATILLA CO., OREGON	SCALE HOR. 1" = 500' VERT.	PAUL W.P. TOMKINS, LAND SURVEYOR 20 EAST POPLAR ST. SUITE 204 WALLA WALLA, WA 99362 FOR: JERRY BODDUM 15 HILLCREST COURT BERKELEY, CA. 94705	BODDUM19.DWG
	DATE JUNE, 1997		SHEET 2 OF 2