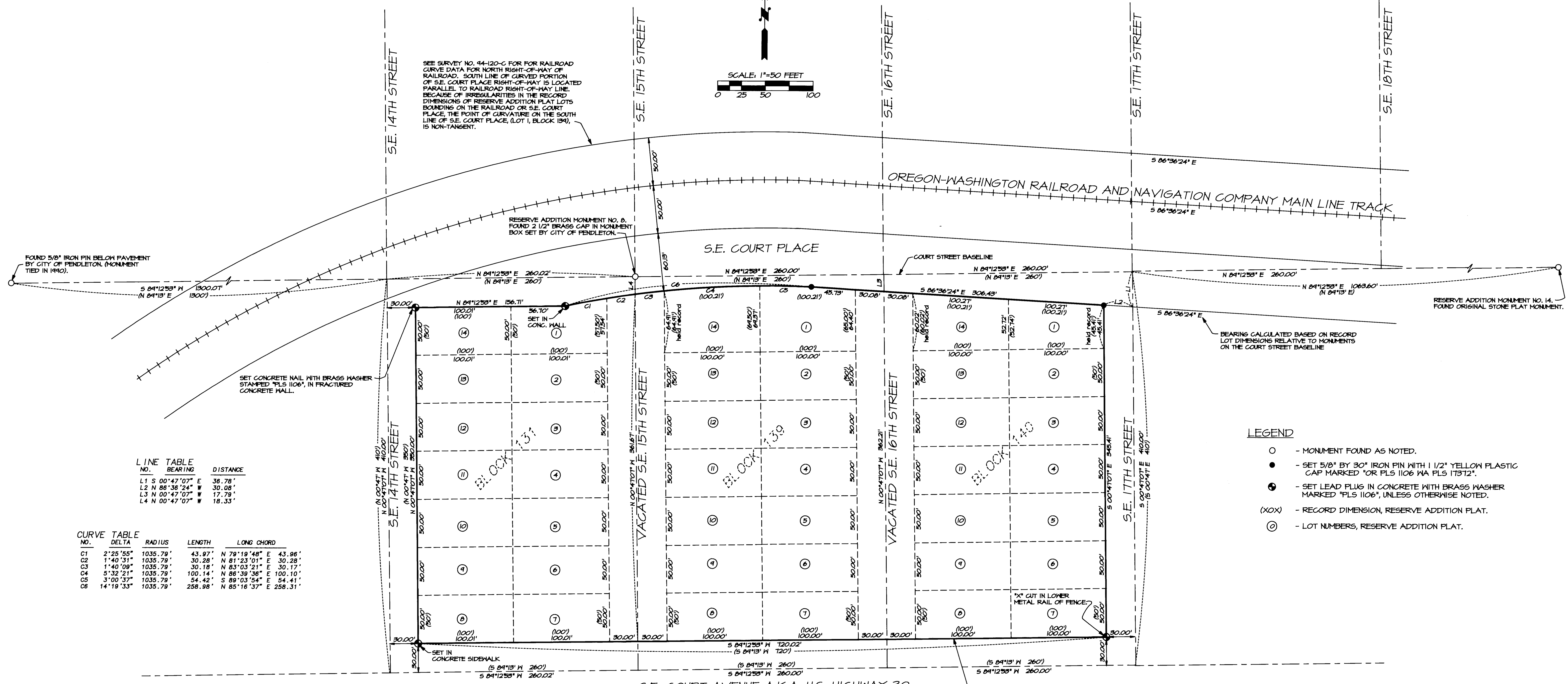


SEE SURVEY NO. 44-120-C FOR RAILROAD CURVE DATA FOR NORTH RIGHT-OF-WAY OF RAILROAD. SOUTH LINE OF CURVED PORTION OF S.E. COURT PLACE RIGHT-OF-WAY IS LOCATED PARALLEL TO RAILROAD RIGHT-OF-WAY LINE. BECAUSE OF IRREGULARITIES IN THE RECORD DIMENSIONS OF RESERVE ADDITION PLAT LOTS BOUNDING ON THE RAILROAD OR S.E. COURT PLACE, THE POINT OF CURVATURE ON THE SOUTH LINE OF S.E. COURT PLACE, (LOT 1, BLOCK 134), IS NON-TANGENT.



LINE TABLE

NO.	BEARING	DISTANCE
L1	S 00°47'07\"	36.78'
L2	N 86°36'24\"	30.08'
L3	N 00°47'07\"	17.79'
L4	N 00°47'07\"	18.33'

CURVE TABLE

NO.	DELTA	RADIUS	LENGTH	LONG CHORD
C1	2°25'55\"	1035.79'	43.97'	N 79°19'48\" E 43.96'
C2	1°40'31\"	1035.79'	30.28'	N 81°23'01\" E 30.28'
C3	1°40'09\"	1035.79'	30.18'	N 83°03'21\" E 30.17'
C4	5°32'21\"	1035.79'	100.14'	N 86°39'36\" E 100.10'
C5	3°00'37\"	1035.79'	54.42'	S 89°03'54\" E 54.41'
C6	14°19'33\"	1035.79'	258.98'	N 85°16'37\" E 258.31'

- LEGEND
- - MONUMENT FOUND AS NOTED.
 - - SET 5/8" BY 30" IRON PIN WITH 1 1/2" YELLOW PLASTIC CAP MARKED "OR PLS 1106 WA PLS 17372".
 - ⊙ - SET LEAD PLUG IN CONCRETE WITH BRASS WASHER MARKED "PLS 1106", UNLESS OTHERWISE NOTED.
 - (XOX) - RECORD DIMENSION, RESERVE ADDITION PLAT.
 - ⊙ - LOT NUMBERS, RESERVE ADDITION PLAT.

NOTE: NO RECORD OF ADDITIONAL RIGHT-OF-WAY ACQUISITION FOR S.E. COURT AVENUE (U.S. HIGHWAY 30), WAS FOUND. COUNTY ASSESSOR MAPS SHOW RIGHT-OF-WAY LINE 40' NORTH OF STREET CENTERLINE.

NARRATIVE OF SURVEY

THIS SURVEY, MADE AT THE REQUEST OF SELLEN CM, IS FOR THE PURPOSE OF IDENTIFYING AND MONUMENTING THE BOUNDARIES OF THE ST. ANTHONY HOSPITAL PROPERTY LOCATED IN BLOCKS 131, 134 AND 140, RESERVE ADDITION, CITY OF PENDLETON.

THE BOUNDARIES OF THE BLOCKS WERE DETERMINED FROM RESERVE ADDITION BOUNDARY MONUMENTS "RB 14", "RB 8" AND A CITY PIN MONUMENT LOCATED AT THE INTERSECTION OF S.E. 10TH STREET AND S.E. COURT PLACE. THESE MONUMENTS, DEFINE A PORTION OF THE "COURT STREET BASELINE", SURVEYED IN THE PLAT OF RESERVE ADDITION. THE SUBJECT BLOCKS WERE LAID OUT PERPENDICULAR AND PARALLEL WITH THE COURT STREET BASELINE AS SHOWN ON THIS RECORD OF SURVEY.

THE NORTH LINE OF BLOCKS 131, 134 AND 140 WERE DETERMINED BY HOLDING RECORD PLAT DIMENSIONS ON WEST LINE LOT 14, BLOCK 134, EAST LINE LOT 1, BLOCK 140 AND WEST LINE LOT 14, BLOCK 140. THESE RECORD DIMENSIONS BOUND ON THE SOUTH LINE OF S.E. COURT PLACE, WHICH IS PARALLEL TO THE SOUTH LINE OF THE OREGON-WASHINGTON RAILROAD AND NAVIGATION COMPANY MAIN LINE ALONG PORTIONS OF THE NORTH LINE OF THE BLOCKS. THERE ARE MINOR DISCREPANCIES IN THE PLAT RECORD DIMENSIONS BETWEEN THE NORTH AND SOUTH SIDE OF THE MAIN LINE TRACK. THE DISCREPANCIES RANGE BETWEEN 0.1 AND 0.3 FEET. "HELD" RECORD DIMENSIONS ARE INDICATED ON THIS RECORD SURVEY PLAT.

THIS SURVEY WAS MADE WITH A TWO PERSON CREW USING A SOKKIA SET 4B FIVE SECOND TOTAL STATION. MEASUREMENTS WERE MADE BY A COMBINATION OF RADIAL TIES AND CLOSED TRAVERSES. MONUMENTS WERE ESTABLISHED BY RADIAL METHODS AND VERIFIED BY SEPARATE OBSERVATIONS.

RECEIVED BY
 Umatilla County Surveyor
 Date: 8/30/96
 Word: J. J. [Signature]
 No. 96-139-C

REGISTERED PROFESSIONAL LAND SURVEYOR
 WILLIAM R. WELLS
 OREGON
 JULY 22, 1977
 WILLIAM R. WELLS
 1108
 RENEWS 6/30/98

WILLIAM R. WELLS, PLS
 357 N.E. HWY. 11
 P.O. BOX 1696
 PENDLETON, OR 97801
 PHONE: (541) 276-6362
 DATE: 6/1/96 DR. BY: WRW
 CK. BY: WRW NO: 46-344

PROJECT:
 BOUNDARY SURVEY FOR:
 SELLEN CM
 OF
 ST. ANTHONY HOSPITAL PROPERTY
 LOCATED IN BLOCKS 131, 134 & 140,
 RESERVE ADDITION, PENDLETON, OR.
 LOCATED IN THE NE 1/4 NE 1/4 OF
 SECTION 11, T2N, R32E, W4E,
 UMATILLA COUNTY, OREGON.