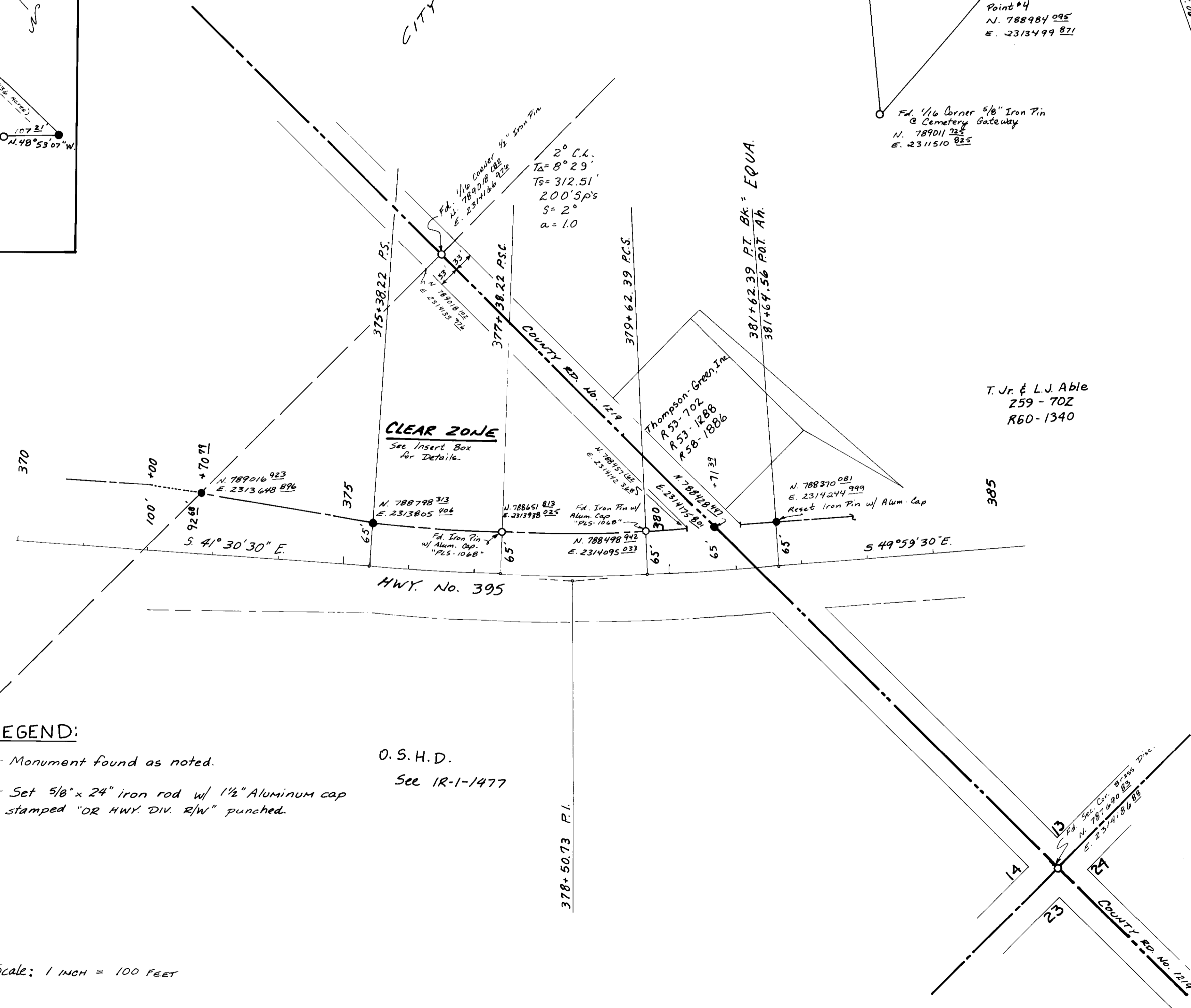
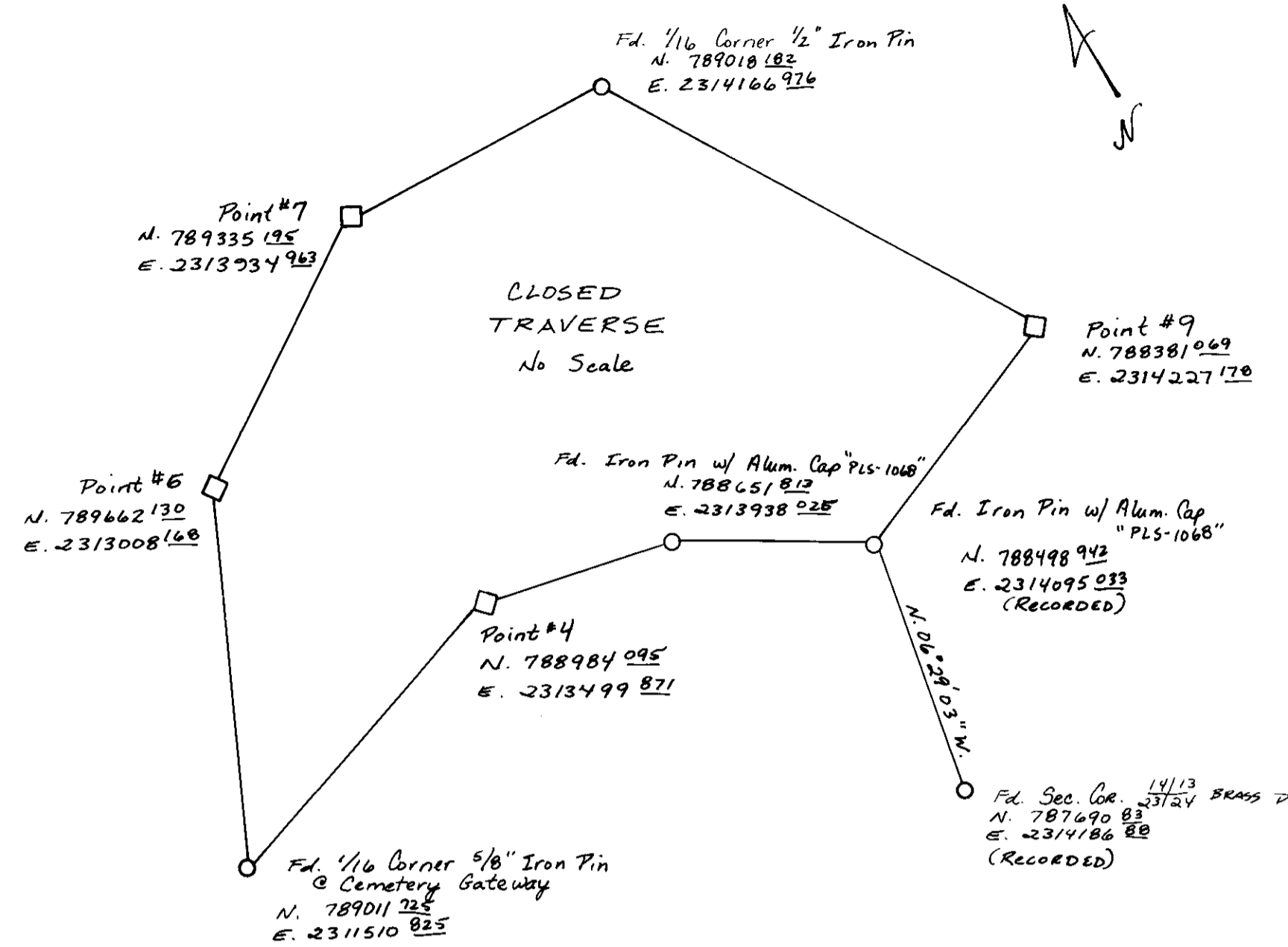
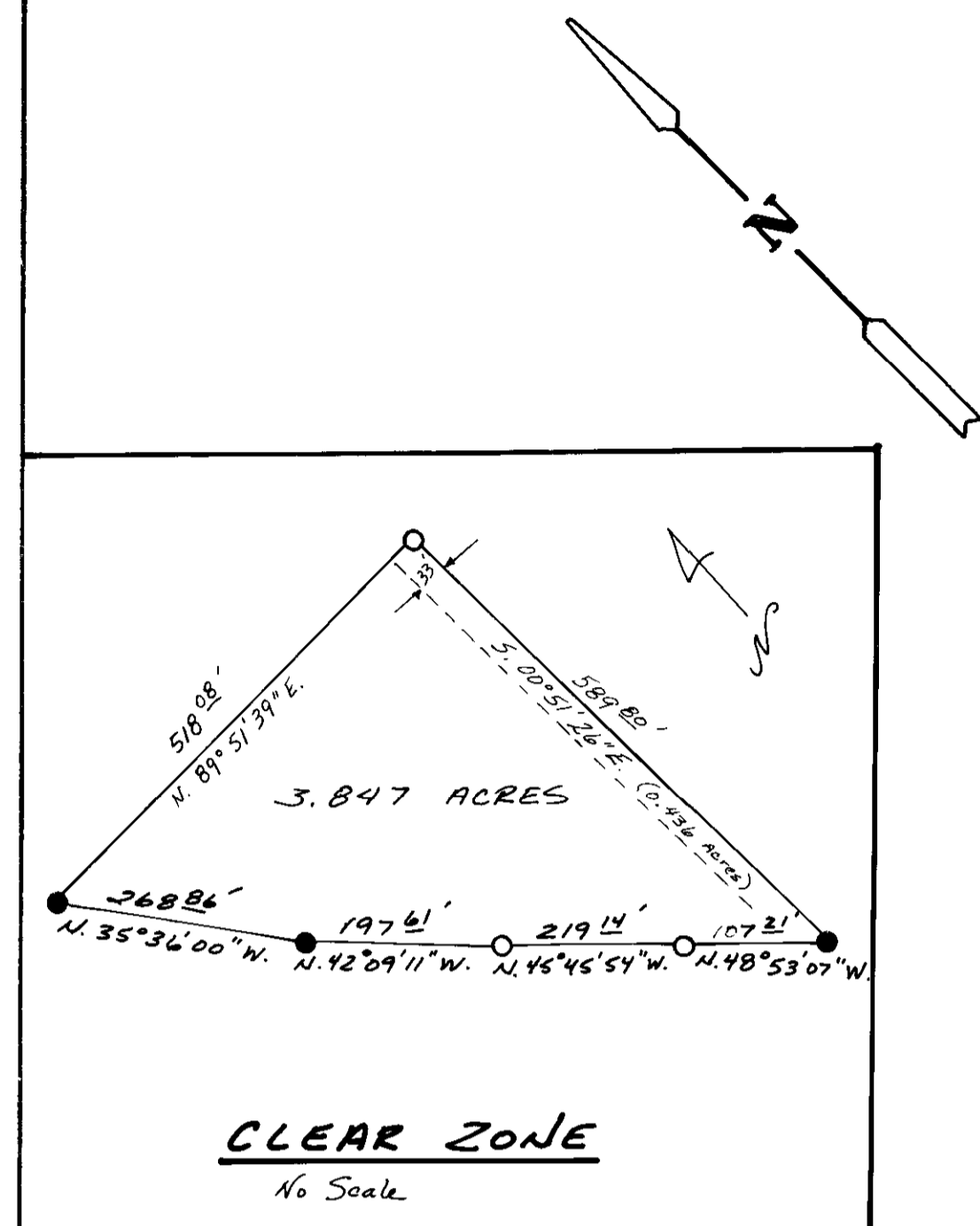


T 4 N R 28 E W.M.

RECORD OF SURVEY FOR HERMISTON AIRPORT				SHEET
OREGON DEPT. OF TRANSPORTATION				No.
HIGHWAY 395 SOUTH - HERMISTON IN SECTION 14, T. 4 N., R. 28 E., N.M., UMATILLA COUNTY, OREGON				1
HD. ROAD	STATE	PROJECT	BOOK AS	TOTAL
Div. No.		NUMBER	YEAR	SHEETS
10	OREGON			See Index

REGISTERED
PROFESSIONAL
LAND SURVEYOR
Walter R. Sullivan
OREGON
WALTER R. SULLIVAN
OCT 6 1978
#74

Walter R. Sullivan
Expiration Date = 12-31-94
OREGON DEPARTMENT OF TRANSPORTATION
3012 Island Avenue
LaGrande, Oregon 97850



LEGEND:
○ - Monument found as noted.
● - Set 5/8" x 24" iron rod w/ 1/2" Aluminum cap stamped "OR HWY. DIV. R/W" punched.

O.S.H.D.
See IR-1-1477

Scale: 1 INCH = 100 FEET

NARRATIVE

The purpose of this survey was to monument a parcel of land lying in the N.E. 1/4, S.E. 1/4 of Section 14 Township 4 North, Range 28 East, W.M., Umatilla County, Oregon, the said parcel being a portion of that property described in that deed to the City of Hermiston, recorded on microfilm R-31, page 1110 of Umatilla County Deed Records; the said parcel being that portion of said property included in a strip of land variable in width, lying on the East side of the Umatilla-Stanfield Highway as per Oregon State Highway Drawing No. 9B-9-13. This parcel was computed to contain 3.847 Acres by coordinate area method.

The basis of bearing was established from File Map No. DOT 004 and Drawing No. 9B-9-13. Coordinates used are Local Datum Plane which represent true ground distance. Bearings are Oregon State Grid North Zone. To convert L.D.P. coordinates to Oregon State Grid North Zone, multiply L.D.P. coordinates by 0.9999226.

A traverse was then run through found and set points including a 1/16 corner being the N.W. corner of S.W. 1/4 of S.E. 1/4 Section 14 fnd. 5/8" Iron Pin, and 1/16 corner being the N.E. corner of S.E. 1/4 of S.E. 1/4 Section 14 fnd. 1/2" Iron Pin. The traverse closure was within 1:47,300 adjusted by compass rule. Parcel boundary intersects were then computed through Highway Right-of-Way. 5/8" x 30" Iron Pins were set with a punched Aluminum OSHD R/W cap. The R/W pin 65 ft. left of Station 375+38.22 (P.S.) was obliterated and the R/W pin at 65 ft. left of EQ. Sta. 381+62.39 (P.T.) Back and Sta. 381+64.56 (P.O.T.) Ahead had disturbed therefore both monuments were reset from this survey of this time. The remainder of R/W monuments were in good condition and were included in this traverse to define said parcel boundary.

RECORDED BY
5-96
PK
96-81-C