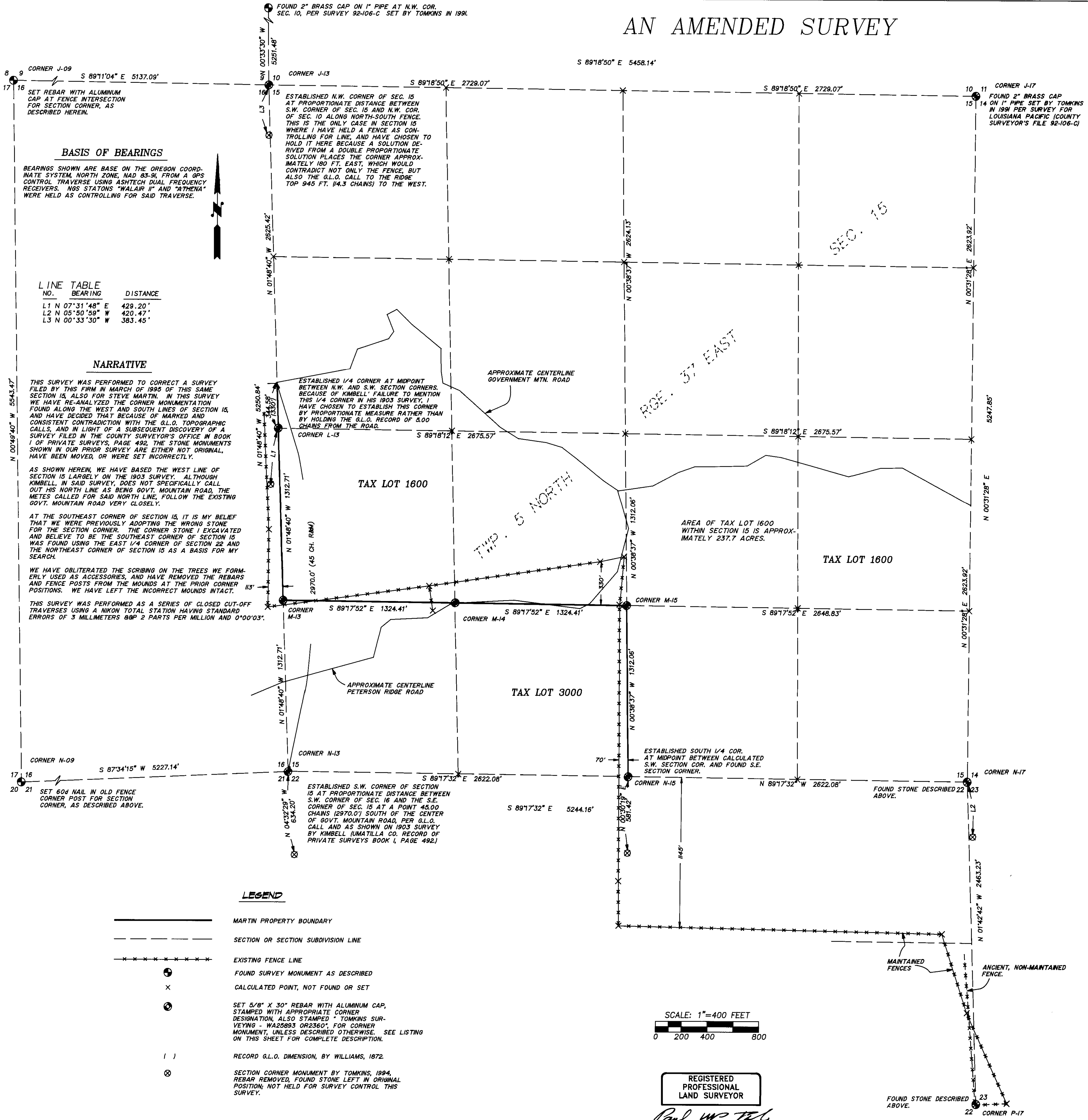


AN AMENDED SURVEY

LAND CORNER RECORDS



CORNER CODE M-13
S. 1/16 CORNER OF SEC.'S 16 AND 15
HISTORY: NONE
EVIDENCE FOUND: NONE
CORNER PERPETUATION: SET 5/8" X 30" REBAR WITH 2" ALUMINUM CAP, POST AND SIGN 1 FT. NORTH WITH THE FOLLOWING BEARING TREES FOR ACCESSORIES: 14" DIA. FIR N2°30'E 30.4'; SCRIBED 1/16 BT" AND A 9" DIA. FIR S26°W 23.8' SCRIBED 1/16 BT." CORNER IS APPROXIMATELY 120' EAST AND 30' NORTH OF A FENCE CORNER.

CORNER CODE P-17
1/4 CORNER COMMON TO SECTIONS 22 AND 23
HISTORY: CORNER WAS ORIGINALLY ESTABLISHED BY GEORGE WILLIAMS, IN 1872, AS A STONE 8"X10"X24".
EVIDENCE: FOUND A STONE 8"X10"X24", 6" OF WHICH WAS BURIED, IN ANCIENT STONE MOUND, WITH A 1/2" X 24" GALVANIZED IRON PIPE LYING ALONGSIDE, LOOSE. STONE AND PIPE ARE 6 FT. EAST OF AN ANCIENT FENCE CORNER AND ROCK JACK WERE RUNNING TO NORTH AND WEST. STONE IS APPROXIMATELY 240 FT. WEST OF WELL MAINTAINED FENCE CORNER.
CORNER PERPETUATION: SET PIPE FIRMLY ALONGSIDE STONE, ATTACHED PLASTIC YELLOW CAP AND BRASS WASHER TO PIPE, AND RAISED MOUND OF STONE, ALSO ATTACHED BEARING OBJECT SIGN TO THE ANCIENT ROCK JACK.

CORNER CODE M-14
S.W. 1/16 CORNER OF SECTION 15
HISTORY: NONE
EVIDENCE FOUND: NONE
CORNER PERPETUATION: SET 5/8" X 30" REBAR WITH 2" ALUMINUM CAP, AND SCRIBED THE FOLLOWING TREES 1/16 BT" FOR ACCESSORIES: 30" PINE N8°30'W 14.0'; 20" PINE N44°30'E 2.9'. ALSO SET FENCE POST AND SIGN 1 FT. NORTH OF THE CORNER. CORNER IS APPROXIMATELY 10 FT. NORTH OF AN OLD EAST-WEST FENCE, REMNANTS OF WHICH CAN BE SEEN IN A NEARBY TREE, AND IS APPROXIMATELY 150 FT. SOUTH OF A NEWER FENCE THAT RUNS N80°E.

CORNER CODE M-15
CENTER SOUTH 1/16 CORNER OF SECTION 15
HISTORY: NONE
EVIDENCE FOUND: NONE
CORNER PERPETUATION: SET 5/8" X 30" REBAR WITH 2" ALUMINUM CAP IN A 24" DIAMETER MOUND. SET A STEEL FENCE POST WITH MONUMENT SIGN 1.5 FT. EAST OF CORNER.

CORNER CODE N-13
S.W. CORNER OF SECTION 15, CORNER COMMON TO SEC.'S 15, 16, 21 AND 22
HISTORY: CORNER WAS ORIGINALLY ESTABLISHED, IN 1872, BY GEO. WILLIAMS, AS A STONE 8" X 20" X 32", ON SIDE HILL THAT FACES S.E. IN 1903, CO. SURVEYOR KIMBELL, BOOK 1 OF PRIVATE SURVEYS, PAGE 492 CALLS CORNER AS 45.00 CHAINS SOUTH OF INTERSECTION OF GOV'T. MTN. ROAD WITH SECTION LINE.
EVIDENCE FOUND: AN 8" X 18" X 27" ROCK ON RIDGE (SIDE HILL), FACES S 10° E, WHAT APPEARS TO BE A 1" LONG CHISEL ON THE TOP. THIS ROCK WAS NOT HELD AS THE CORNER. WE HAVE HELD GOV'T. MTN. ROAD AS CONTROLLING FOR THIS CORNER. SEE NARRATIVE AND ADD'L. NOTE AT CORNER.
CORNER PERPETUATION: SET 5/8" X 30" REBAR WITH 2" ALUMINUM CAP, IN CENTER OF 24" X 18" STONE MOUND. SET A STEEL FENCE POST WITH MONUMENT SIGN 5 FT. EAST OF CORNER.

CORNER CODE N-15
SOUTH 1/4 CORNER OF SECTION 15, AND NORTH 1/4 CORNER OF SECTION 22
HISTORY: CORNER WAS ORIGINALLY ESTABLISHED, IN 1872, BY GEO. WILLIAMS, AS A STONE 18" X 22" X 20".
EVIDENCE FOUND: A SET STONE ON A STEEP S.W. SLOPE, 14" X 22" X 7" - BURIED. DID NOT HOLD AS THE CORNER.
CORNER PERPETUATION: SET 5/8" X 30" REBAR WITH 2" ALUMINUM CAP, SET STONES AROUND REBAR. SET FENCE POST AND SIGN 1 FT. S.E. OF CORNER.

CORNER CODE N-17
S.E. CORNER OF SECTION 15, CORNER COMMON TO SEC.'S 14, 15, 22 AND 23
HISTORY: CORNER WAS ORIGINALLY ESTABLISHED, IN 1872, BY GEO. WILLIAMS, AS A STONE 12" X 16" X 18".
EVIDENCE FOUND: A STONE 12" X 16" X 18", BURIED 9", IN A SCATTERED STONE MOUND, ON RIDGE.
CORNER PERPETUATION: SET 5/8" X 30" REBAR WITH 2" ALUMINUM CAP, IN CENTER OF STONE AND EARTH MOUND. SET A STEEL FENCE POST WITH MONUMENT SIGN ALONGSIDE. STONE WAS LEFT ALONGSIDE REBAR.

CORNER CODE J-13
N.W. CORNER OF SECTION 15, CORNER COMMON TO SEC.'S 9, 10, 15 AND 16
HISTORY: CORNER WAS ORIGINALLY ESTABLISHED, IN 1872, BY GEO. WILLIAMS, AS A STONE 14" X 17" X 24".
EVIDENCE FOUND: TWO 8" X 14" X 23" ROCK HALVES. CORNER FALLS IN OLD N-S FENCE, EVIDENCE ALSO OF FENCE TO WEST. ROCK WAS NOT HELD FOR CORNER. SEE NARRATIVE AND ADDITIONAL NOTE BY CORNER.
CORNER PERPETUATION: SET 5/8" X 30" REBAR WITH 2" ALUMINUM CAP IN EASTERLY TRACK OF OLD ROAD. SET STEEL FENCE POST WITH SIGN ON EAST SIDE OF ROAD 3.3' EAST OF CORNER.

CORNER CODE L-13
1/4 CORNER COMMON TO SECTIONS 15 AND 16
HISTORY: CORNER WAS ORIGINALLY ESTABLISHED, IN 1872, BY GEO. WILLIAMS, AS A STONE 12" X 14" X 18".
EVIDENCE FOUND: 12" X 14" X 18" PYRAMIDICAL STONE 1/3 OF WHICH WAS BELOW GROUND. STONE IS 20' ± SOUTH OF LINE OF OLD ROCK JACKS (NO SIGN OF FENCE OR WIRE) RUNNING EAST-WEST. STONE NOT HELD. SEE ADDITIONAL NOTE AND NARRATIVE.
CORNER PERPETUATION: SET 5/8" X 30" REBAR WITH 2" ALUMINUM CAP IN OPEN PASTURE SOUTH OF POND. SET FENCE POST AND SIGN 1 FT. SOUTH OF CORNER, AND SCRIBED THE FOLLOWING TREES FOR ACCESSORIES: 10" PINE S20°E 20.9' AND A 12" PINE N25°W 96.0'.
CORNER CODE J-09
N.W. CORNER OF SECTION 16, CORNER COMMON TO SEC.'S 9, 16, AND 17.
HISTORY: CORNER WAS ORIGINALLY ESTABLISHED, IN 1872, BY GEORGE WILLIAMS, AS A STONE 10" X 15" X 28". CORNER IS ALSO CALLED BY CO. SURVEYOR KIMBELL IN 1903 AS 218 CHAINS WEST OF GOV'T. MOUNTAIN ROAD. (RECORD OF PRIVATE SURVEYS VOL. I, PAGE 492.)
EVIDENCE FOUND: WE HAVE HELD THE NORTHERLY TERMINUS OF AN ANCIENT NORTH-SOUTH FENCE, INTERSECTING AN EAST-WEST FENCE AS THE CORNER. A 10"X15"X28" STONE, WHICH I BELIEVE TO BE THE ORIGINAL CORNER WAS FOUND 35' SOUTH OF THE FENCE INTERSECT. ROCK HAD WIRE WRAPPED AROUND AND WAS OBVIOUSLY DISPLACED AND USED FOR FENCE SUPPORT. I THEREFORE DID NOT HOLD AS THE SECTION CORNER, BUT BELIEVE IT AS EVIDENCE OF THE AUTHENTICITY OF THE CORNER WE HAVE HELD.
CORNER PERPETUATION: SET A 5/8" X 30" REBAR IN STONE MOUND FOR THE CORNER. ATTACHED SIGN TO NEARBY FENCE POST.

CORNER CODE N-09
S.W. CORNER OF SECTION 16, CORNER COMMON TO SEC.'S 16, 17, 20, AND 21.
HISTORY: CORNER WAS ORIGINALLY SET IN 1872, BY GEORGE WILLIAMS, AS A STONE 4"X18"X30".
EVIDENCE FOUND: ORIGINAL STONE NOT FOUND. WE HAVE HELD A PROMINENT FENCE CORNER WITH WELL MAINTAINED FENCES TO NORTH AND WEST FOR THE CORNER.
CORNER PERPETUATION: SET 60d NAIL AND YELLOW PLASTIC CAP IN CHARRED FENCE CORNER POST, FLUSH WITH GROUND. A STONE 4"X18"X30" LIES ALONGSIDE. ALSO ATTACHED A BEARING OBJECT SIGN TO THE FENCE CORNER, 1.5 FT. NORTH OF THE CHARRED FENCE POST CORNER.

BASIS OF BEARINGS

BEARINGS SHOWN ARE BASE ON THE OREGON COORDINATE SYSTEM, NORTH ZONE, NAD 83-94, FROM A GPS CONTROL TRAVERSE USING ASHTACH DUAL FREQUENCY RECEIVERS. NGS STATIONS "WALAI" AND "ATHENA" WERE HELD AS CONTROLLING FOR SAID TRAVERSE.

LINE NO.	BEARING	DISTANCE
L1	N 07°31'48" E	429.20'
L2	N 05°50'59" W	420.47'
L3	N 00°33'30" W	383.45'

NARRATIVE

THIS SURVEY WAS PERFORMED TO CORRECT A SURVEY FILED BY THIS FIRM IN MARCH OF 1995 OF THIS SAME SECTION 15, ALSO FOR STEVE MARTIN. IN THIS SURVEY WE HAVE RE-ANALYZED THE CORNER MONUMENTATION FOUND ALONG THE WEST AND SOUTH LINES OF SECTION 15, AND HAVE DECIDED THAT BECAUSE OF MARKED AND CONSISTENT CONTRADICTION WITH THE G.L.O. TOPOGRAPHIC CALLS, AND IN LIGHT OF A SUBSEQUENT DISCOVERY OF A SURVEY FILED IN THE COUNTY SURVEYOR'S OFFICE IN BOOK 1 OF PRIVATE SURVEYS, PAGE 492, THE STONE MONUMENTS SHOWN IN OUR PRIOR SURVEY ARE EITHER NOT ORIGINAL, HAVE BEEN MOVED, OR WERE SET INCORRECTLY.

AS SHOWN HEREIN, WE HAVE BASED THE WEST LINE OF SECTION 15 LARGELY ON THE 1903 SURVEY. ALTHOUGH KIMBELL, IN SAID SURVEY, DOES NOT SPECIFICALLY CALL OUT HIS NORTH LINE AS BEING GOV'T. MOUNTAIN ROAD, THE METES CALLED FOR SAID NORTH LINE, FOLLOW THE EXISTING GOV'T. MOUNTAIN ROAD VERY CLOSELY.

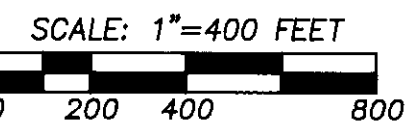
AT THE SOUTHEAST CORNER OF SECTION 15, IT IS MY BELIEF THAT WE WERE PREVIOUSLY ADOPTING THE WRONG STONE FOR THE SECTION CORNER. THE CORNER STONE I EXCAVATED AND BELIEVE TO BE THE SOUTHEAST CORNER OF SECTION 15 WAS FOUND USING THE EAST 1/4 CORNER OF SECTION 22 AND THE NORTHEAST CORNER OF SECTION 15 AS A BASIS FOR MY SEARCH.

WE HAVE OBLITERATED THE SCRIBING ON THE TREES WE FORMERLY USED AS ACCESSORIES, AND HAVE REMOVED THE REBARS AND FENCE POSTS FROM THE MOUNDS AT THE PRIOR CORNER POSITIONS. WE HAVE LEFT THE INCORRECT MOUNDS INTACT.

THIS SURVEY WAS PERFORMED AS A SERIES OF CLOSED CUT-OUT TRAVERSES USING A NIKON TOTAL STATION HAVING STANDARD ERRORS OF 3 MILLIMETERS @ 2 PARTS PER MILLION AND 0°00'03".

LEGEND

- MARTIN PROPERTY BOUNDARY
- - - SECTION OR SECTION SUBDIVISION LINE
- - - - - EXISTING FENCE LINE
- FOUND SURVEY MONUMENT AS DESCRIBED
- x CALCULATED POINT, NOT FOUND OR SET
- ⊙ SET 5/8" X 30" REBAR WITH ALUMINUM CAP, STAMPED WITH APPROPRIATE CORNER DESIGNATION, ALSO STAMPED "TOMKINS SURVEYING - WA28983 OR2360", FOR CORNER MONUMENT, UNLESS DESCRIBED OTHERWISE. SEE LISTING ON THIS SHEET FOR COMPLETE DESCRIPTION.
- () RECORD G.L.O. DIMENSION, BY WILLIAMS, 1872.
- ⊗ SECTION CORNER MONUMENT BY TOMKINS, 1994. REBAR REMOVED, FOUND STONE LEFT IN ORIGINAL POSITION; NOT HELD FOR SURVEY CONTROL THIS SURVEY.



REGISTERED PROFESSIONAL LAND SURVEYOR
Paul W.P. Tomkins

OREGON
JULY 26, 1988
PAUL W.P. TOMKINS
2360
RENEWS 6/30/96
6/23/95

AN AMENDED SURVEY OF LANDS WITHIN SECTION 15, TOWNSHIP 5 NORTH, RANGE 37 EAST, WILLAMETTE MERIDIAN, UMATILLA COUNTY, OREGON.

SCALE HOR. 1" = 400' VERT. N.A.	DATE JUNE, 1995	PAUL W.P. TOMKINS, LAND SURVEYOR 6 1/2 N. SECOND SUITE 303 WALLA WALLA, WA. 99362 FOR: STEVE MARTIN 1830 GLASGOW BEND, OREGON.	MARTISA.DWG SHEET OF
---------------------------------------	--------------------	--------------------------------------------------------------------------------------------------------------------------------------	-------------------------

RECEIVED BY
Martisa
7-95
95-113-C