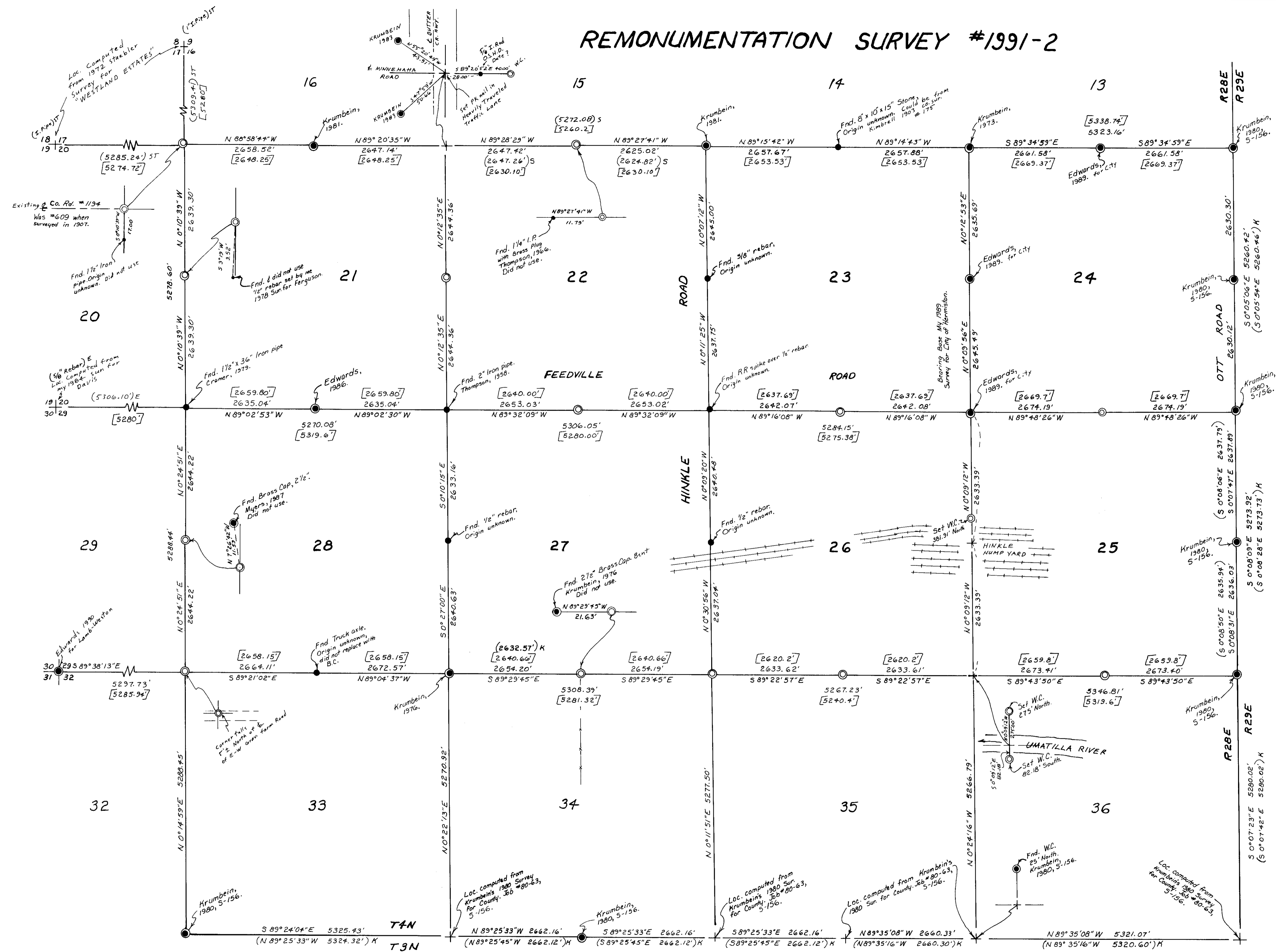


REMONUMENTATION SURVEY #1991-2



NARRATIVE:

The purpose of this survey is to remonument and reference the G. L. O. Corners of Section 21 through 28 under Contract #1991-2 with Umatilla County. These sections were originally surveyed by Taft under Contract #93 in 1860. He set post in mound with trench and pits and deposited a pint of charcoal at all corners except for the Southwest corner of Section 25 which falls in the Umatilla River.

The range line between T4N, R28E & R29E was surveyed by Campbell under Contract #95 in 1860. He set post, drove a charred stake and made mound with pits at all corners. No original evidence was found. Dave Krumbain remonumented the South and East lines of T4N, R28E, in a 1980 survey for the County (*S-156).

I ran a traverse through all monuments found in these 8 sections and evaluated their relationship with the original survey. Most monuments were held but some were obviously out of position.

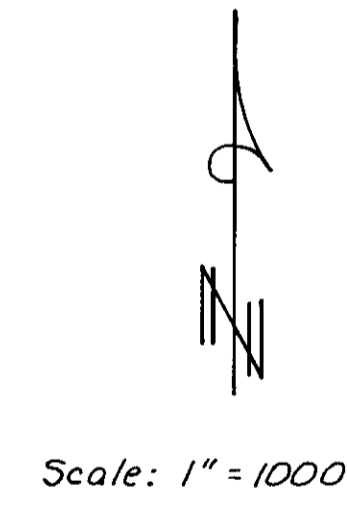
I did not use the 1 1/2" Iron pipe at the NW corner of Section 21, which has been used by all surveyors since at least 1963, because its proportional position should be 32.00 feet North. I compromised at a location of 17.00 feet North which is the centerline of the East-West County Road #1194. (It was #609 when surveyed by John Kimbrell in 1907 along the section line.) I consider the Road a monument.

I did not use the 1/2" rebar I set at the W 1/4 corner of Section 21 by single proportion from the wrong NW corner of Section 21.

I did not use the Brass Cap set by Myers at the W 1/4 corner of 28 in 1987 for Betz or the Brass Cap set by Krumbain at the S 1/4, Section 27 in 1976 for UPLAND INDUSTRIES because they do not match the original survey or improvements. The improvements are an East-West farm road 1/2 mile South of Myers corner and a North-South fence line South of Krumbain's corner. Both of those corners were set from Railroad ties.

I did not use Thompson's 1966 N 1/4 corner of Section 22 because he used the original 1860 survey to proportion it in and he should have used Saxton's 1909 U.S. Survey.

The distances between all the other corners found and set compare reasonably well with the original surveys except the South line of Section 21. I used My 1989 survey for the City of Hermiston in Section 24 for the bearing base.



REGISTERED PROFESSIONAL LAND SURVEYOR
 G. DENNIS EDWARDS
 JULY 14, 1971
 951

LEGEND:

- Found 2 1/2" Brass Cap monuments. (See Monument Sheets.)
 - Monuments found & replaced with 2 3/8" Brass Caps on 1" x 30" Iron pipes. (See Monument Sheets.)
 - Set 2 3/8" Brass Caps on 1" x 30" Iron pipes. (See Monument Sheets.)
- [000] of Record original survey, Taft 1860.
 (000) of Record: S 1909 Saxton U.S. Survey.
 K 1980 Krumbain, S-156.
 E 1984 My Survey for Davis in Section 20.
 ST Computed from Staebler 1972 Survey in Sections 17 and 18.

RECEIVED BY
 Umatilla County Surveyor
 Date: 4-7-92
 Rec'd by: LF
 No: 42-15-C

Survey for UMATILLA COUNTY
 In Sec. 21 through 28, T4N, R28E, W.M.,
 Umatilla County, Oregon
 1/15/92 Job #S9108039
 Edwards Surveying P.O. Box 763
 567-3336 Hermiston, Oregon 97838