

NOTES

MONUMENTS SET IN N.W. 10TH, 11TH & 12TH ARE SET FROM AN ADJUSTED, BALANCED CONTROL NET & BASED UPON ORIGINAL FOUND MONUMENTS TO THE NORTH & ON DESPAIN AVE. THE ORIGINAL HIGHWAY DATA IS USED FOR CARDEN R/W EXCEPT ALONG THE SOUTH LINE OF BROWNS COURT ADDITION WHERE THE PLATTED R/W BASED ON FOUND MONUMENTS IS HELD AS TRUE. ALL BEARINGS SHOWN ARE BASED ON THE PENDLETON LOCAL GRID. BRASS CAPS SHOWN SET PER THIS SURVEY REPLACE ORIGINAL SPIKES SET.

LEGEND

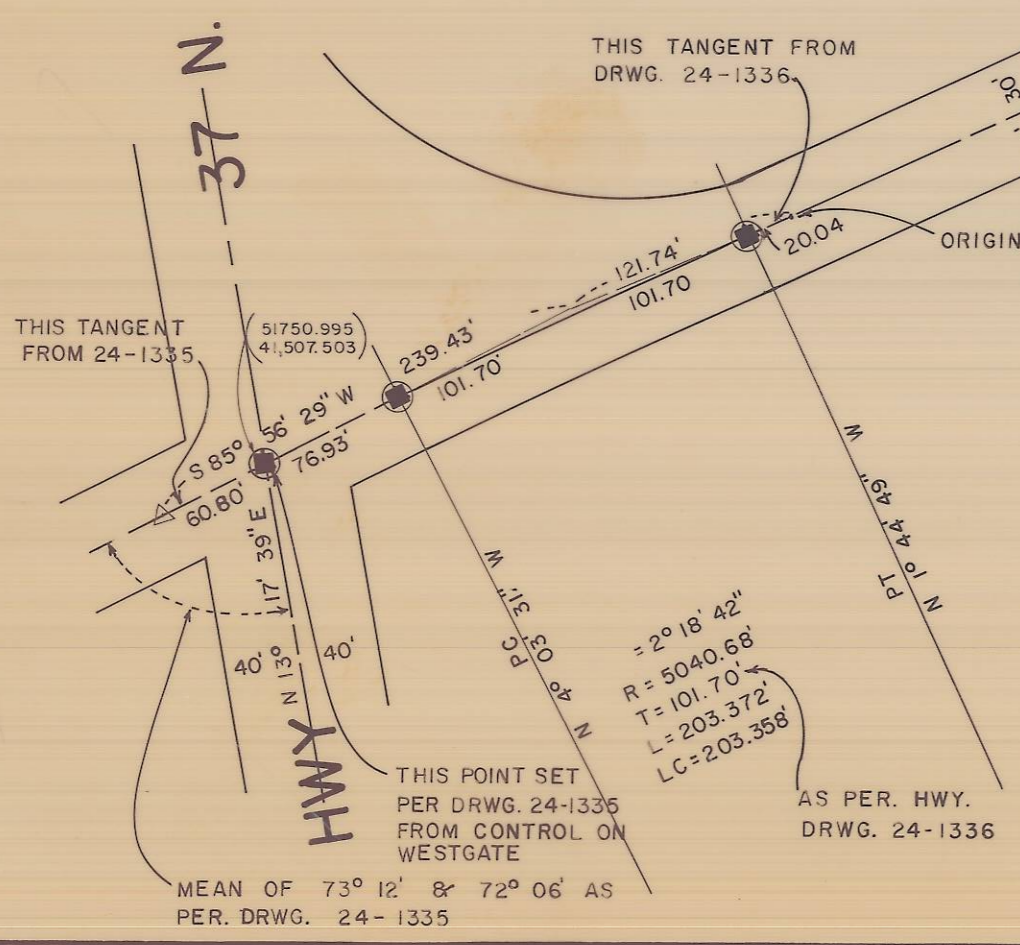
- X - STONE
- - VALVE BOX
- - BRASS CAP
- △ - R.R. SPIKE
- - IRON PIN
- - IRON PIPE
- - CIRCLED MONUMENTS SET PER THIS SURVEY

REGISTERED PROFESSIONAL LAND SURVEYOR
Richard A. Bordenkircher
 OREGON
 RICHARD A. BORDENKIRCHER
 2141

CITY OF PENDLETON ENGINEERING DEPT.		
CONTROL SURVEY N.W. CARDEN R/W		
DATE: SEPT., 1985	SCALE: 1"=100'	SHEET 1 OF 2
DN. 006.	CKD. 510	DWG. NO. 24-7723

RECEIVED BY
 Umatilla County Surveyor
 Date: 12-87
 Rec'd by: RA
 No. 89-132-C

24-7723



COMM. HOSP.
 H.C. STA. L-3
 (44,998.622)
 (43,276.488)