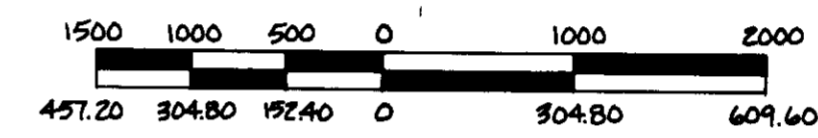


BASIS OF BEARING
POLARIS OBSERVATION JULY 21, 1980

MEAN MAGNETIC DECLINATION
N 19° E

METRIC EQUIVALENT
ONE FOOT IS EQUAL TO 0.304800 METERS



REFERENCE MATERIALS

GLO NOTES & PLATS FOR T5N, R38E, W.M.

FIELD BOOKS 1 THRU 5 FOR CROWN ZELLERBACH SURVEY.

- LEGEND**
- SET MONUMENT AS DESCRIBED ON ATTACHED U.S.F.S. FORM R6-7100-57 FROM ORIGINAL CORNER EVIDENCE.
 - SET MONUMENT AS DESCRIBED ON ATTACHED U.S.F.S. FORM R6-7100-57 BASED ON SURVEY.
 - { } RECORD DATA FROM ORIGINAL SURVEY BY GEORGE WILLIAMS IN 1872.
 - () RECORD DATA FROM RESURVEY BY WILLIAM CAMPBELL IN 1899.
 - *** POSTED CROWN ZELLERBACH BOUNDARY LINE.
 - SECTION NUMBER.

CROWN ZELLERBACH LANDS

	ACRES
SECTION 4: LOTS 5, 6, 11 & 12	161.5
THE SW 1/4	164.9
SECTION 5: THE SE 1/4	165.1
THE W 1/2 OF THE SW 1/4	82.5
SECTION 8: THE NW 1/4	161.9
THE N 1/2 OF THE NE 1/4	83.6
THE N 1/2 OF THE SW 1/4	82.0
THE SW 1/4 OF THE SW 1/4	41.2
THE NE 1/4 OF THE SE 1/4	40.2
SECTION 9: LOT 3	47.2
THE NW 1/4	167.0

NOTE:

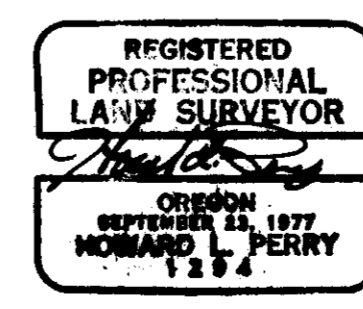
1. THE ORIGINAL CLOSING CORNER POSITION WAS MONUMENTED BASED ON EVIDENCE OF ORIGINAL CORNER FOUND. THE DISTANCES ON THE PLAT ARE TO THE TRUE CLOSING CORNER POSITION WHICH LIES 21.20 FT. N 89° 54' 09" W OF ORIGINAL CORNER.

I, HOWARD L. PERRY, a registered land surveyor in the State of Oregon, hereby certify that this plat and the notes hereon, or attached, are a correct representation of a survey performed during July - November, 1980, for Crown Zellerbach Corporation, in accordance with the statutes of the State of Oregon and with the articles of my contract.

Howard L. Perry
Howard L. Perry
Registered Land Surveyor
Oregon License 1294

FOR THE DESCRIPTION OF THE MONUMENT & ACCESSORIES SET UNDER THIS SURVEY, REFER TO THE FOLLOWING U.S.F.S. FORMS R6-7100-57 FOR INDEX FILE NUMBERS: A-5, A-7, A-9, A-11, B-9, B-11, C-5, C-6, C-7, C-9a, C-9b, C-11, C-13, E-5, E-6, E-7, E-9a, E-9b, E-11, F-7, F-9a, G-5, G-7, G-8, G-9a, G-9b, G-10, G-11, G-13, H-6, H-7, H-8, H-9a, H-9b, H-10, J-5, J-6, J-7, J-9a, J-9b, J-9c, J-11, T5N, R38E W.M.

RECEIVED BY
Umatilla County Surveyor
Date 12-80
Rec'd By BLS
No. R-186-13



SECTIONS 4, 5, 8 & 9 T5N R38E W.M.

FOR: CROWN ZELLERBACH CORPORATION

SCALE: 1" = 1000'

DATE: 1980

JOB NO. 2688-60

Anderson Perry & Associates, Inc.
engineering • surveying • materials testing
LA GRANDE & ENTERPRISE, OREGON

SHEET NO. 1