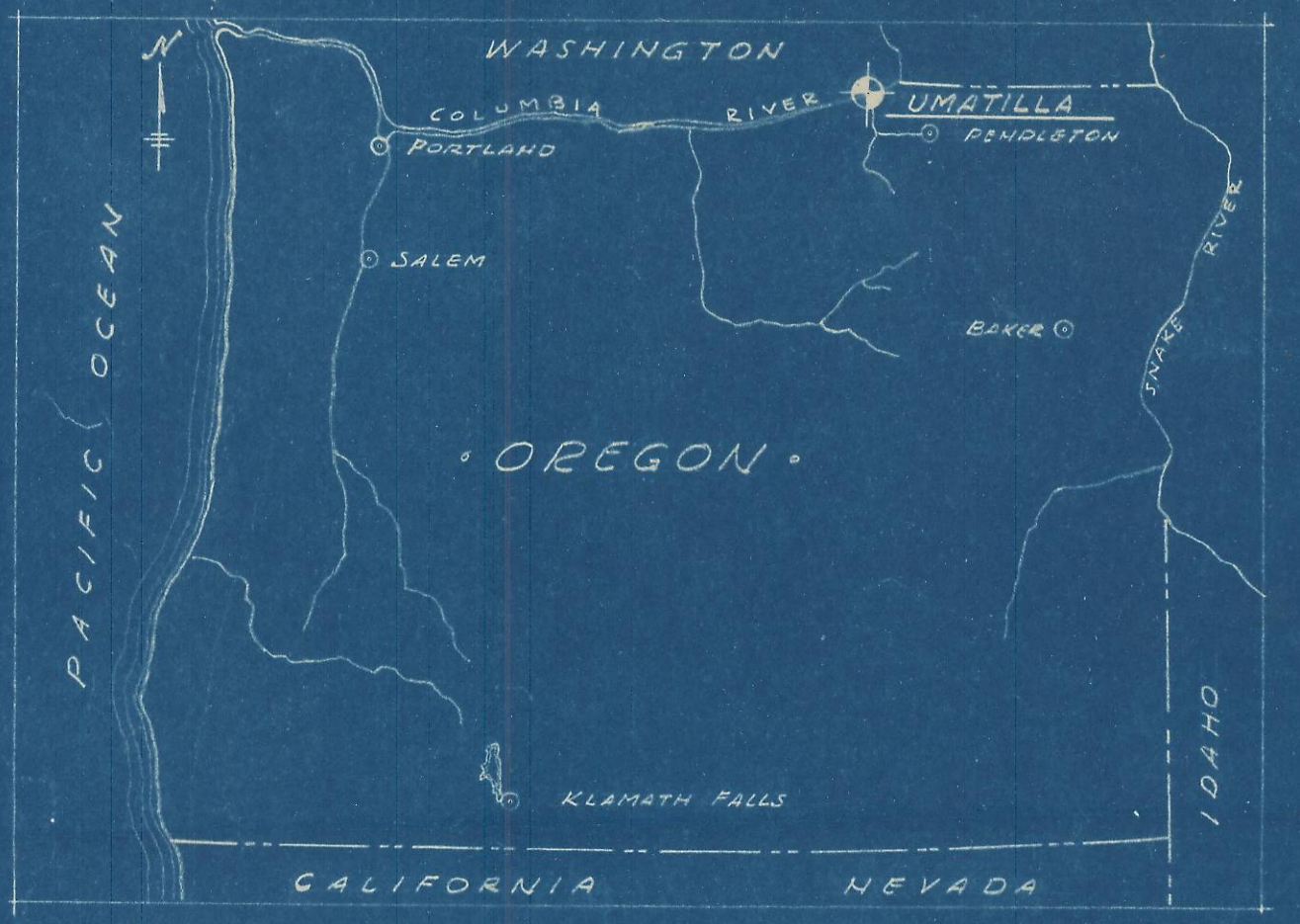
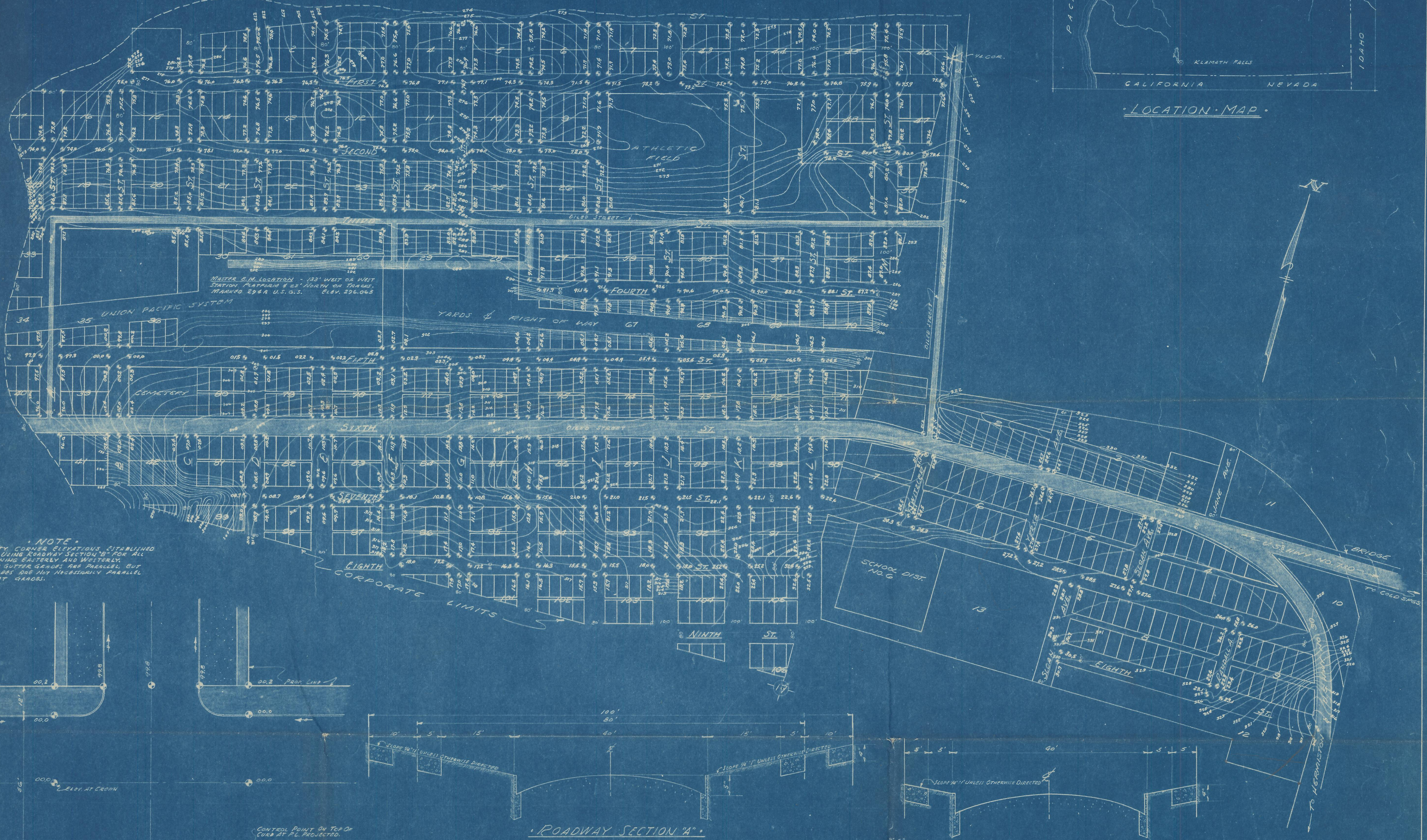


# COLUMBIA RIVER

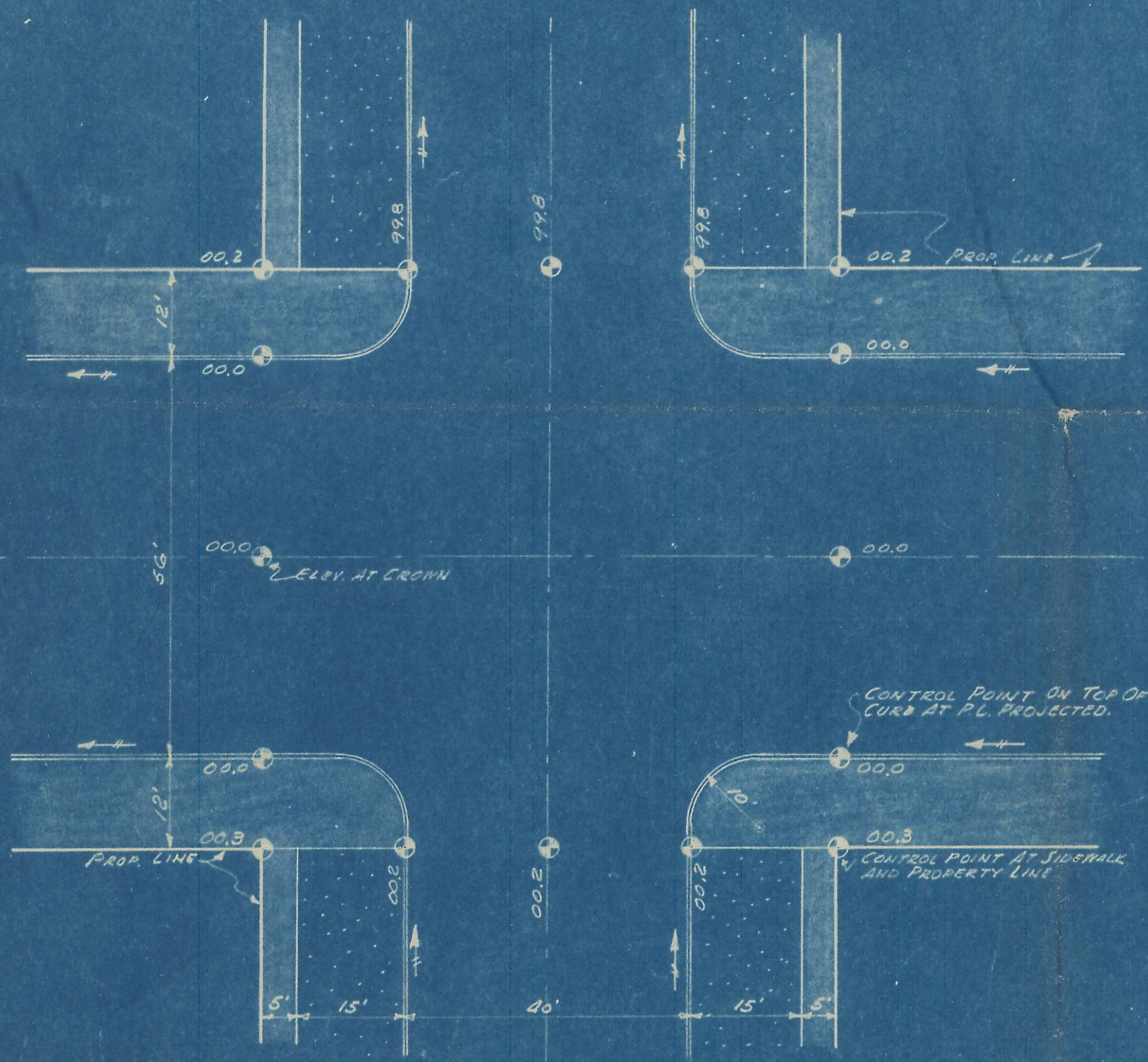


LOCATION MAP

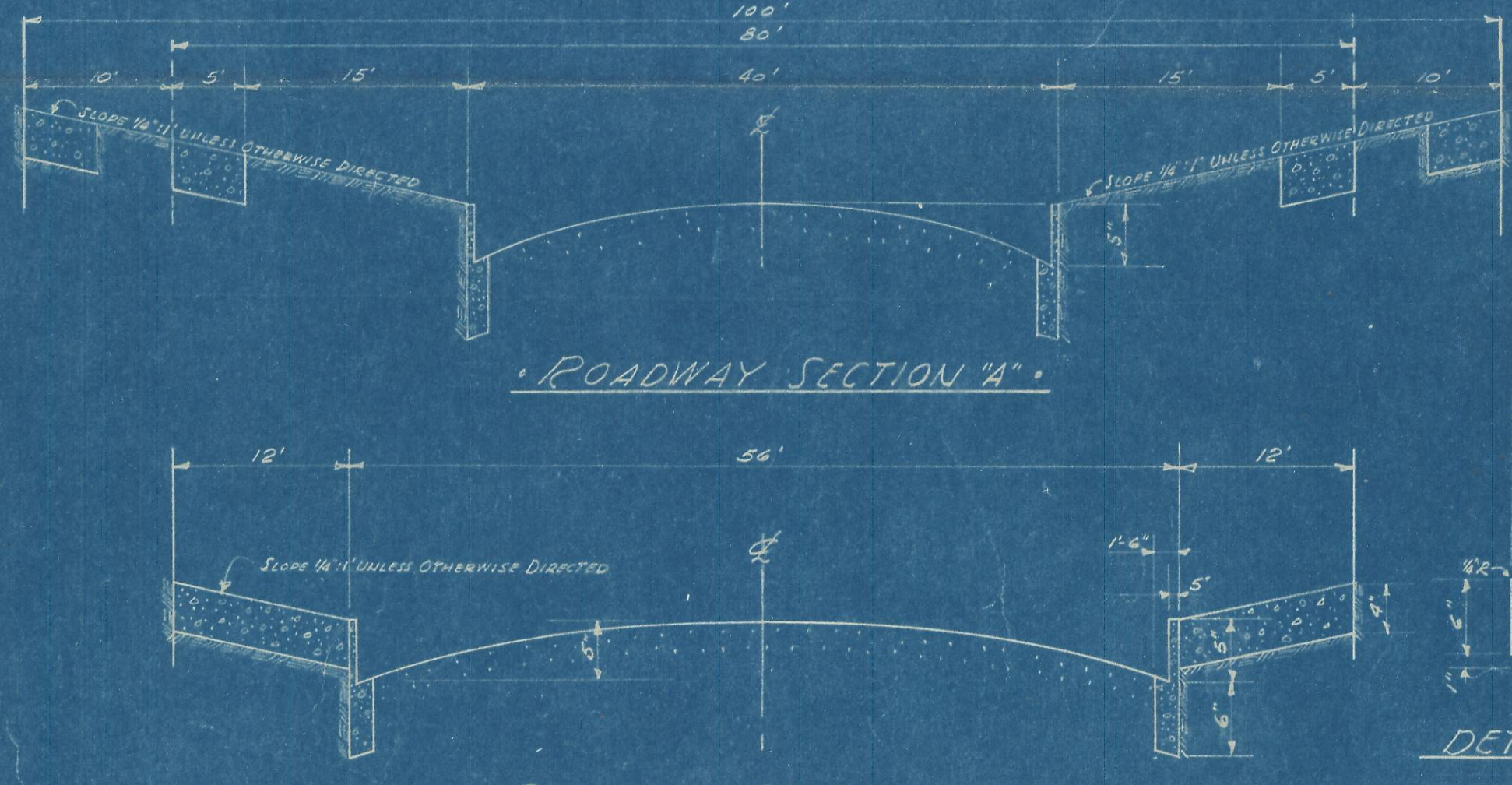
UMATILLA RIVER



**NOTE**  
 PROPERTY CORNER ELEVATIONS ESTABLISHED ON BASIS OF USING ROADWAY SECTION "B" FOR ALL STREETS RUNNING EASTERLY AND WESTERLY. STREET & CURB GRADES ARE PARALLEL, BUT DOWNHILL GRADERS ARE NOT NECESSARILY PARALLEL WITH STREET GRADES.



TYPICAL INTERSECTION



ROADWAY SECTION "A"

ROADWAY SECTION "B"

ROADWAY SECTION "C"

DETAIL OF CURB

NOTE: FIRST FIGURES ON DETERMINATIONS ARE OMITTED. ELEVATIONS ARE TRUE ELEVATIONS BASED ON U.S.G.S. BENCH MARK.

CITY OF UMATILLA		
UMATILLA COUNTY	OREGON	
PROPOSED STREET IMPROVEMENT LAYOUT		
DATE: SEPT. 10, 1945	G. D. HALL	SCALE: 1" = 200'
DRAWN: [Signature]	CONSULTING ENGINEER	SHEET 1
CHECKED: DEG	LARSON BUILDING	OF 1
APPROVED: [Signature]	YAKIMA, WASHINGTON	