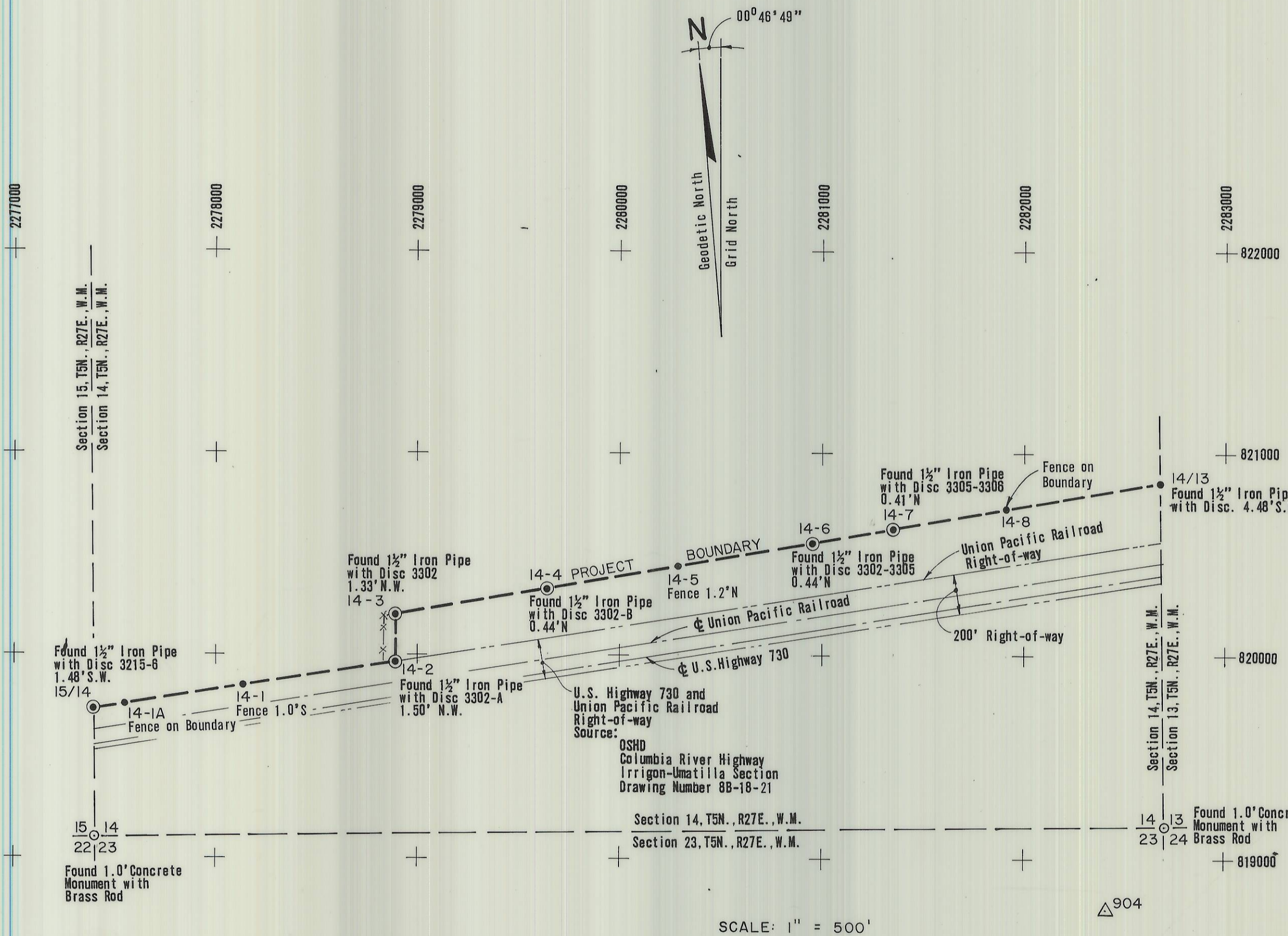


MARK	NORTHING	EASTING	BEARING	DISTANCE	RECOVERY RECORD
Section 14 Boundary					
Point on Section Line 15/14	819734.94	2277398.72	S00°46'22" E	633.80'	
S.W. Corner	819101.39	2277407.27	N89°23'25" E	5292.83'	
S.E. Corner	819157.72	2282699.80	N00°47'15" W	1699.93'	
Point on Section Line 14/13	820857.49	2282676.43			
Project Boundary					
15/14	819734.94	2277398.72	N81°06'57" E	153.00'	
14-1A	819758.57	2277549.89	N81°06'57" E	597.00'	
14-1	819850.77	2278139.73	N81°06'57" E	759.10'	
14-2	819968.00	2278889.72	N00°46'22" W	226.95'	
14-3	820194.93	2278886.65	N80°05'00" E	774.63'	
14-4	820328.33	2279649.72	N80°05'00" E	650.00'	
14-5	820440.27	2280290.00	N80°05'00" E	677.04'	
14-6	820556.87	2280956.93	N80°05'00" E	404.90'	
14-7	820626.60	2281355.78	N80°05'00" E	506.69'	
14-8	820723.16	2281908.09	N80°05'00" E	780.00'	
14/13	820857.49	2282676.43			
Horizontal Control Monument					
904	818754.38	2282401.72			
906	819753.69	2288241.98			



LEGEND:

- Set 4-inch cast aluminum monument stamped Corps of Engineers-U.S. Army Project Boundary, Survey Mark.
- ⊙ Held Found Monument Position as Indicated.
- △ Horizontal Control Monument

NOTE:
East and West Section Line Bearings are True North.

COORDINATES ARE OREGON, NORTH ZONE.
BEARINGS SHOWN ARE ORIENTED TO GRID.
GRID FACTOR 0.9999584

JOHN DAY PROJECT BOUNDARY
UMATILLA AREA
 By CH2M HILL INC.
 For The CORPS OF ENGINEERS
SECTION 14, T5N., R 27E., W.M.
UMATILLA COUNTY OREGON
 Surveyed March 1979 Sheet 1 of 1

REGISTERED
 PROFESSIONAL
 LAND SURVEYOR
Kenneth R. Wengler
 OREGON
 JULY 18, 1973
 KENNETH R. WENGLER
 1002

RECEIVED BY
 Umatilla County Surveyor
 Date 4-10-79
 Rec'd By S. Barth
 No. 3-959-B