

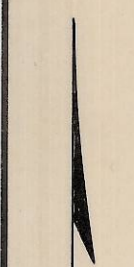
N. E.
Paved Black Top

ELLIS
End of Pavement.

AVE.

Q-193-B

Q-193-B



ST.

N. E. FIRST

5' Conc. S.Walk In Place.

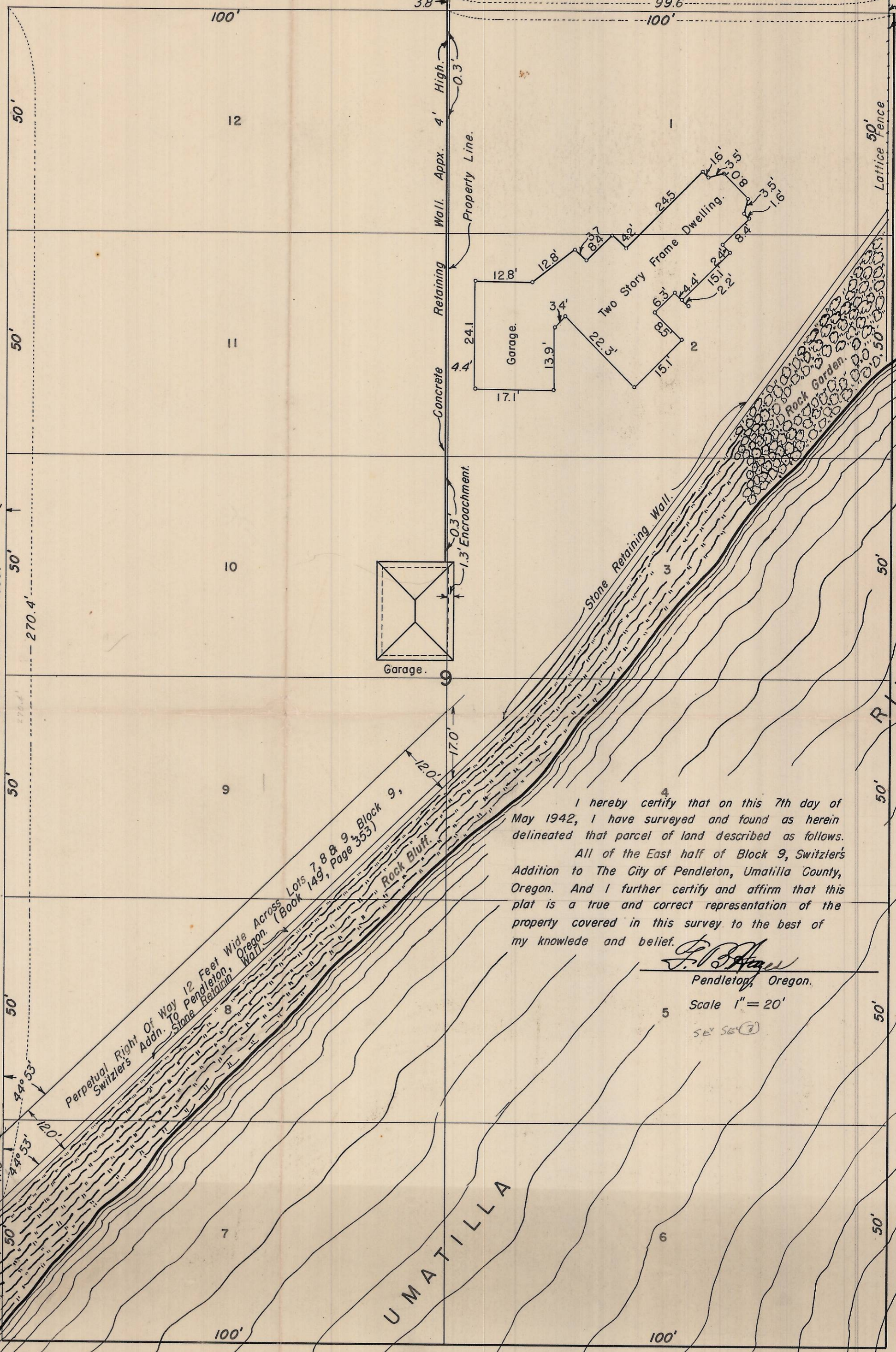
Curb In Place.

Black Top Pavement.

Curb In Place.

5' Conc. S.W. In Place.

270.4'



I hereby certify that on this 7th day of May 1942, I have surveyed and found as herein delineated that parcel of land described as follows.

All of the East half of Block 9, Switzlers Addition to The City of Pendleton, Umatilla County, Oregon. And I further certify and affirm that this plat is a true and correct representation of the property covered in this survey to the best of my knowledge and belief.

F. D. Hayes
Pendleton, Oregon.

Scale 1" = 20'

52° 56' (3)



Q-193-B