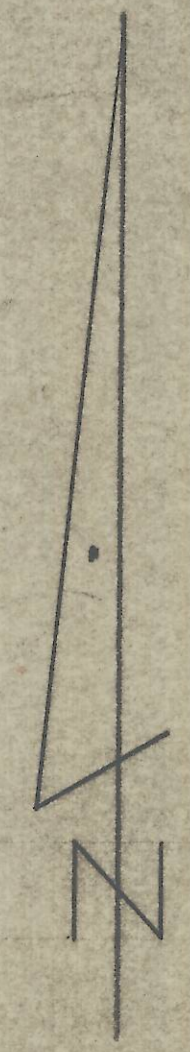
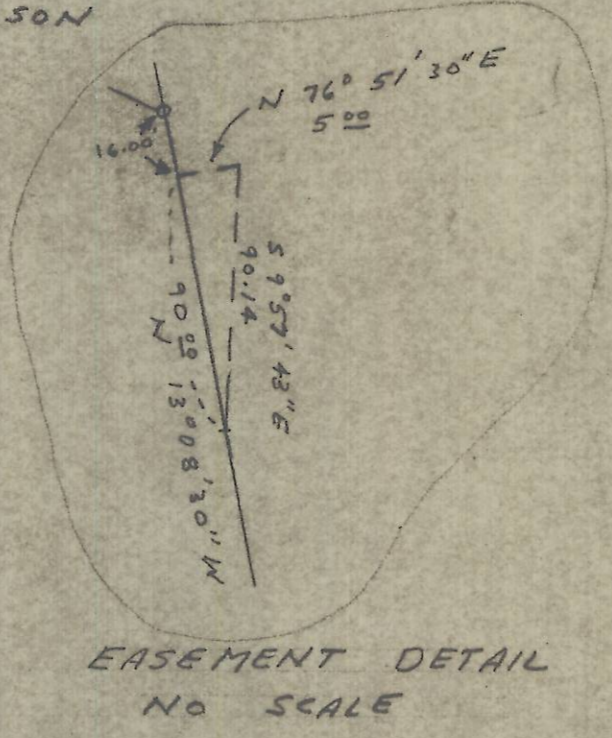


60' wide street
Right of Way
P 439 - Deed



SCALE: 1" = 100'
T 2 N, R 32 E
DATE: 12-18-72
Revised: 8-9-73
11-27-73



S.E. Corner of SW 1/4 of SE 1/4 of Section 9, T 2 N, R 32 E, W.M. (CANC. MONU.) FOUND

Stone with Double cross chiseled in it. The cross to the north is on line and the one to use. (Found) South 1/4 Cor. Sec. 9, T 2 N, R 32 E, W.M.



I-48 B
LAND SURVEY FOR
CH.G. INTERNATIONAL
TACOMA, WASHINGTON
SCALE: 1" = 100' DATE: 12-18-72
REV: 8-9-73
DONALD L. STAEBLER
CONSULTING ENGINEER
P.O. BOX 91
PENDLETON OREGON