

UMATILLA COUNTY  
T. 1 S.  
R. 32 E.  
13 | 18  
24 | 19  
1974  
SURVEYOR  
B.C. Stamped

Set 1/2" x 36" I. Pin  
w/ Brass Cap

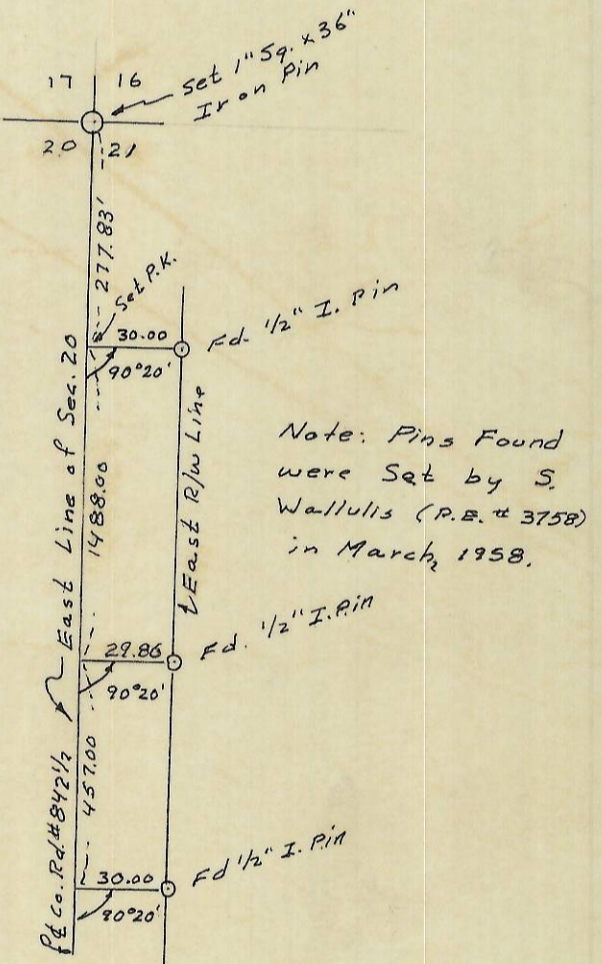
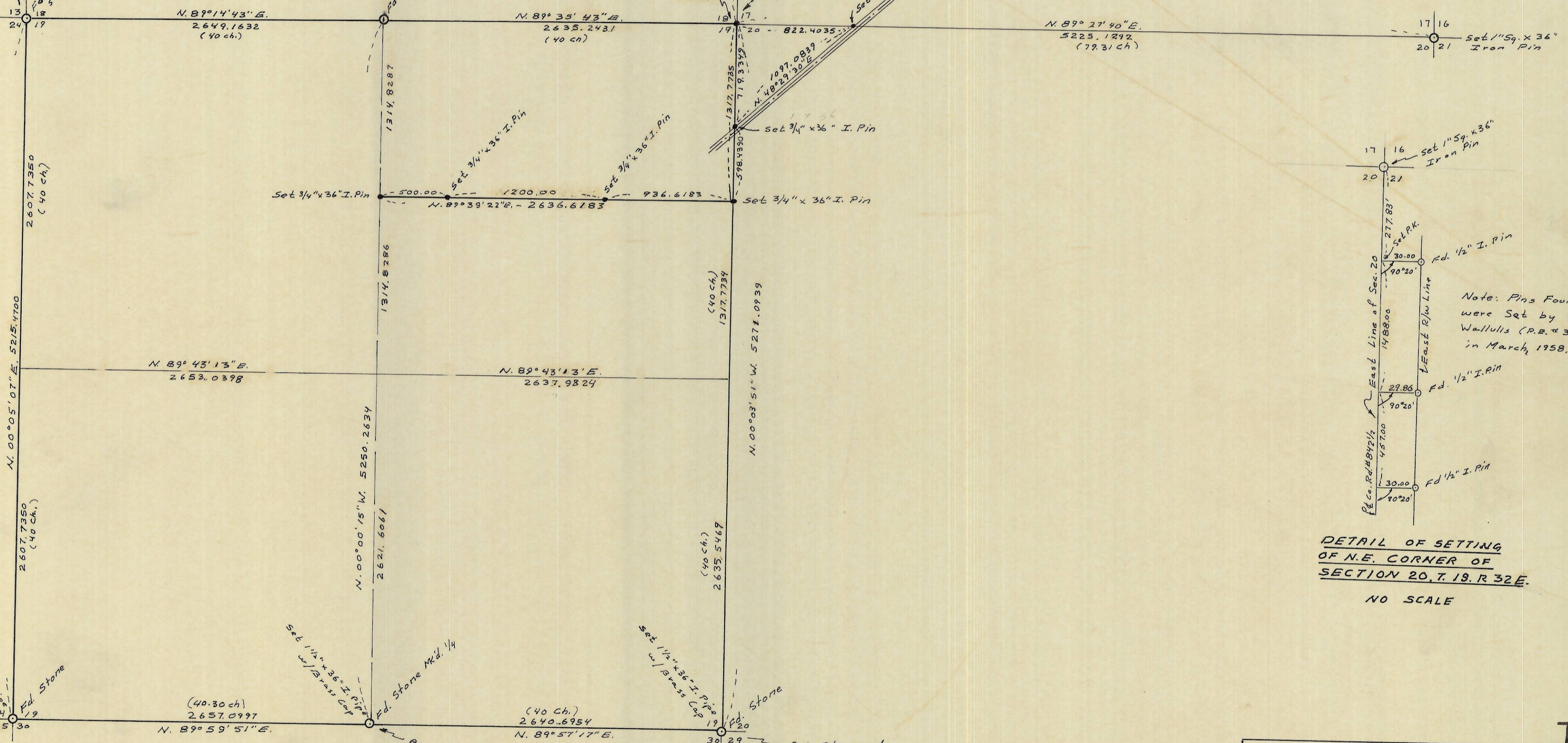
Fd. End (Bottom) of  
Stake in Mound of Stones

E. 1/4 Sec 18  
T. 1 S. R. 32 E.  
Fd. Stone Mk'd. 1/4  
Set 3/4" Sq. x 30" I. Pin

Scale: 1" = 600'

Note: Corner Location Computed by  
Double Proportion Method as  
Per Manual of Instructions

P&U.S. Highway #395



DETAIL OF SETTING  
OF N.E. CORNER OF  
SECTION 20, T. 1 S. R. 32 E.  
NO SCALE

UMATILLA COUNTY  
T. 1 S.  
R. 31 E.  
24 | 19  
25 | 30  
1974  
SURVEYOR

NOTE: Bearings are based on the  
West Line of Section 19 being  
N. 00° 05' 07\"/>

UMATILLA COUNTY  
T. 1 S. R. 32 E.  
1/4  
5.19  
5.30  
1974  
SURVEYOR

UMATILLA COUNTY  
T. 1 S.  
R. 32 E.  
19 | 20  
30 | 29  
1974  
SURVEYOR

REGISTERED PROFESSIONAL  
ENGINEER  
8408  
DONALD L. STAEBLER  
JULY 9, 1968

I-22-B

SURVEY FOR JAMES WHITTAKER		
OF SECTION 19, T. 1 S. R. 32 E. W.M.		
DRN. BY: HFS	DATE: 6-10-74	SCALE: 1" = 600'
DONALD L. STAEBLER CONSULTING ENGINEER P.O. BOX 91 PENDLETON, OREGON 97801		