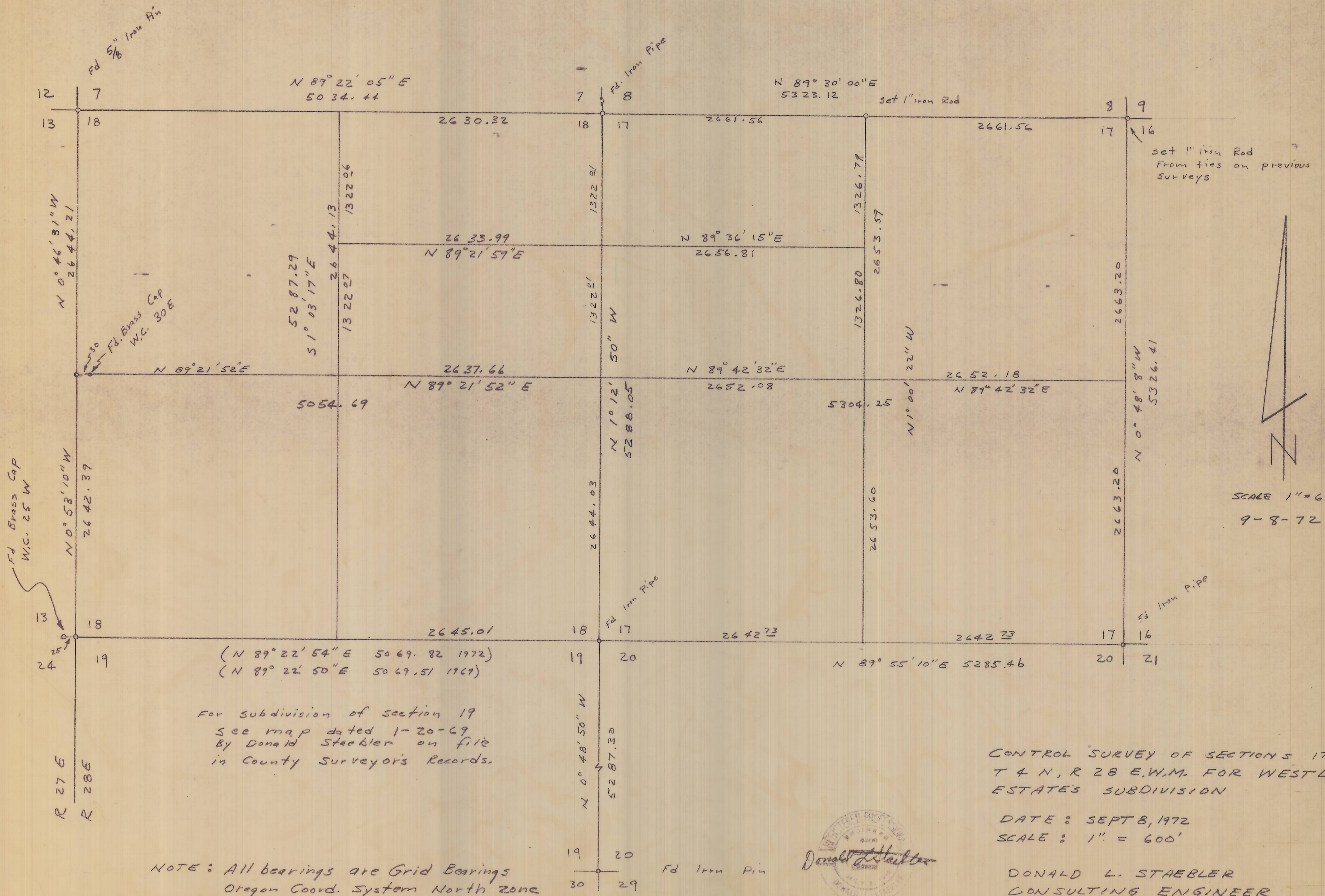


T 4 N, R 28 E.



For subdivision of section 19
 See map dated 1-20-69
 By Donald Staebler on file
 in County Surveyor's Records.

NOTE: All bearings are Grid Bearings
 Oregon Coord. System North zone
 Turned From I-80 N ±

CONTROL SURVEY OF SECTIONS 17 & 18
 T 4 N, R 28 E, W.M. FOR WESTLAND
 ESTATE'S SUBDIVISION

DATE: SEPT 8, 1972
 SCALE: 1" = 600'

DONALD L. STAEBLER
 CONSULTING ENGINEER
 P.O. BOX 91
 Pendleton, OREGON

