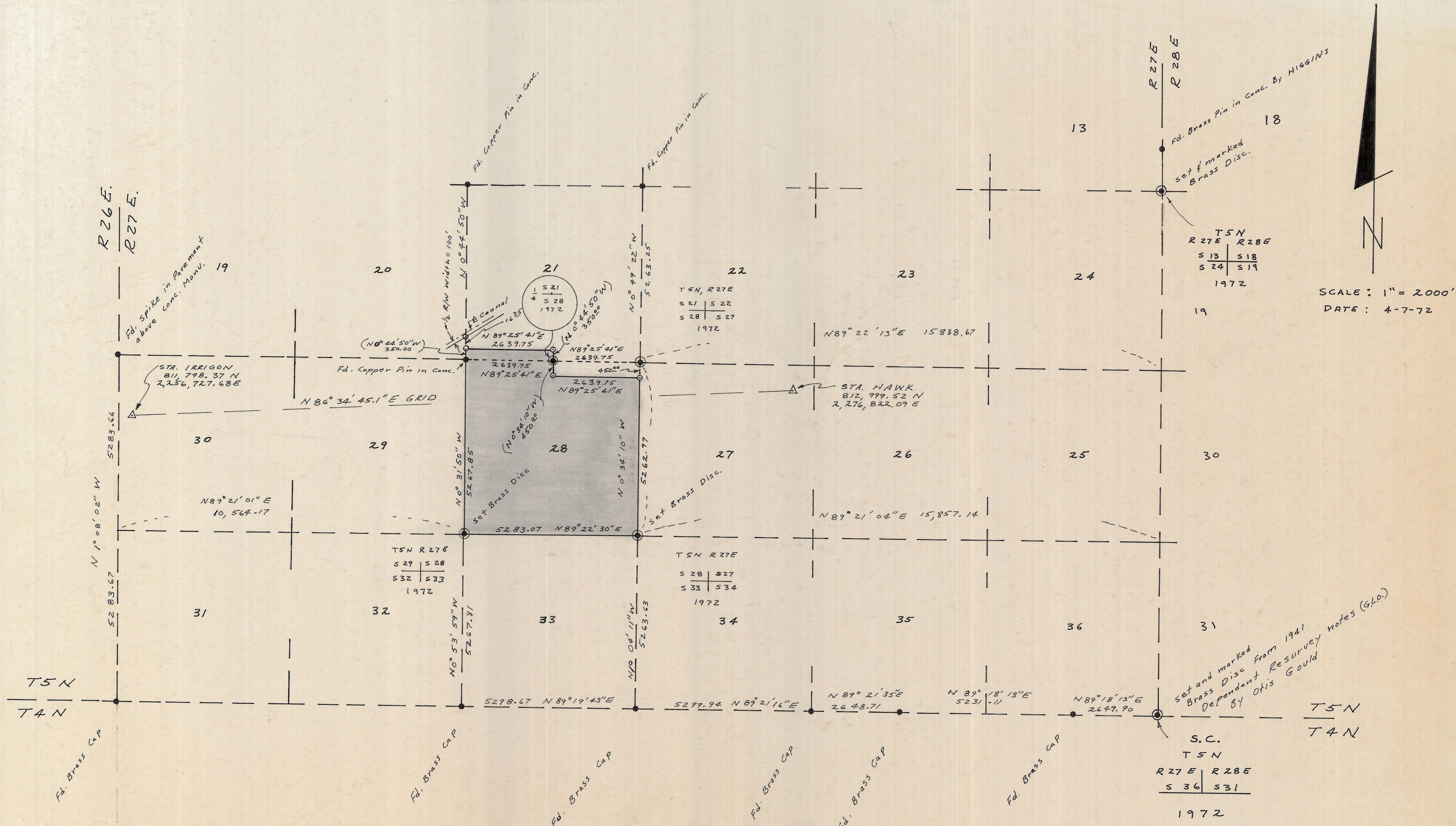
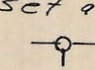


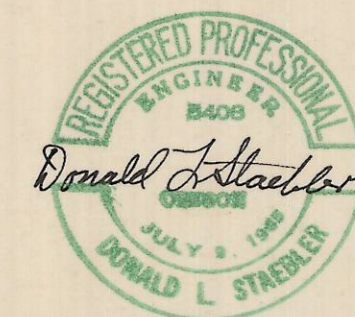
T 5 N, R 27 E.W.M.



NOTES:

- All bearings are Grid bearings based on Oregon Coord. System North Zone.
- The N.E. Corner, S.E. Corner & S.W. Corner was set by Double proportionate distance method. (Section 28)
- N.E. Corner of section 24 was set by Single Proportionate method.
- All six brass discs set in 2" x 36" iron pipe and stamped as shown.

- The monuments set as shown by this symbol  are 2"x36" Iron Pipe With Hub & nail in top. There are 5 such monuments. One of these monuments set marks the intersection of the west line of Section 21 and the southerly R/w line of the Irrigation cannel. (200' R/w)



SURVEY FOR HOWARD STONE  
STONE HERFORD RANCH  
HERMISTON, OREGON  
BY  
DONALD L. STAEBLER  
CONSULTING ENGINEER  
P.O. BOX 91  
PENDLETON, OREGON