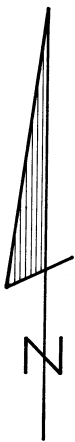
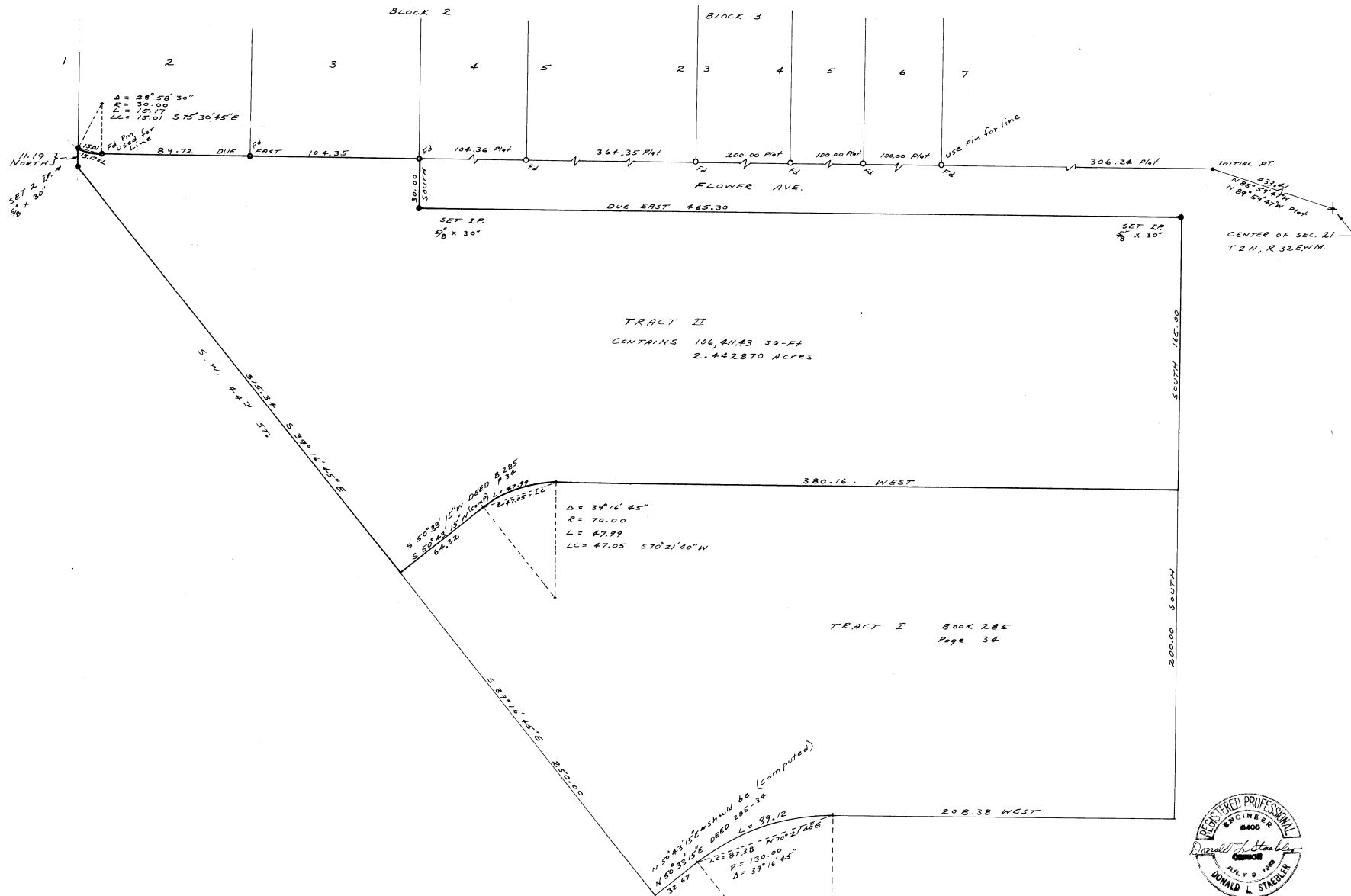


SUNSET VALLEY TRACTS



LAND SURVEY
 FOR
 DONALD R. HILL

IN SECTION 21, T2N, R32E, 11M.

SCALE: 1"=40' DATE: 1-13-71

DONALD L. STREBLER
 CONSULTING ENGINEER
 P.O. Box 91
 PENDELTON OREGON