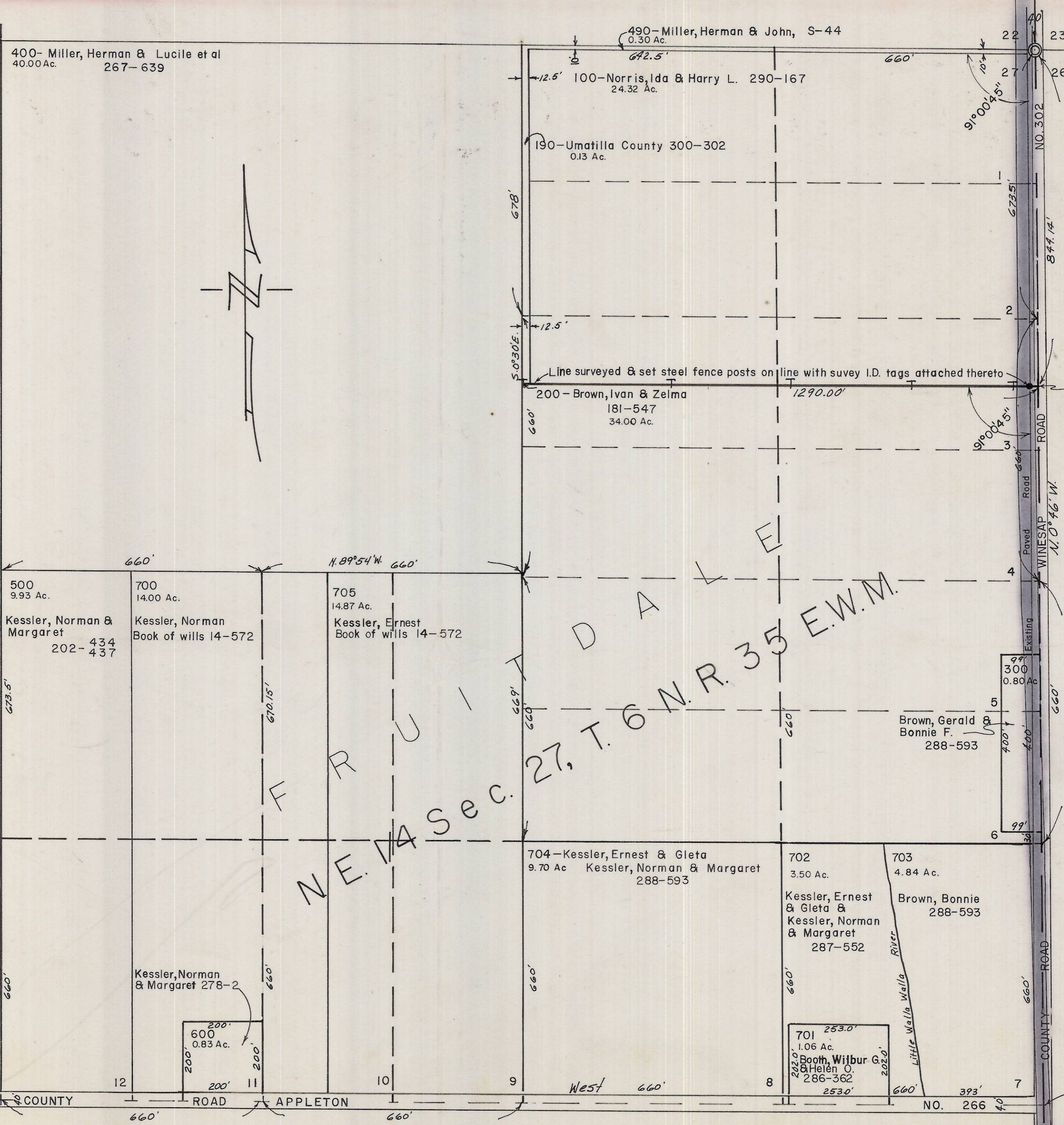


21 22
28 27 Found nail in pavement
1/4 Cor.



Found stone 4"x7"x25", undisturbed, with numbers 22, 23, 27, 26 chiseled in each face. Replaced stone with standard monument, buried stone alongside of pipe. Brass cap stamped.
UMATILLA COUNTY SURVEYOR
T. 6 N. R. 35 E.
S. 22 IS. 23
S. 27 IS. 26
1970

NE 1/4 Sec. 27, T. 6 N. R. 35 E. W. M.

REGISTERED
OREGON
LAND SURVEYOR
Ralph P. Thompson
MAY 13, 1960
RALPH P. THOMPSON
506

BOUNDARY LINE SURVEY BETWEEN
IVAN E. BROWN & HARRY NORRIS
IN THE NE 1/4 SEC. 27, T. 6 N. R. 35 E. W. M.
DATE: Jan. 31, 1970 | SCALE: 1" = 200'
RALPH THOMPSON
UMATILLA COUNTY SURVEYOR
COUNTY COURTHOUSE
PENDLETON, OREGON